

ACCDH | ACCDHS

Compression Load Cell

- ▣ Measurement ranges from 0 ... 10 t to 0 ... 200 t
- ▣ Compression
- ▣ Non-linearity 0.1 % RO (up to 100 t)
- ▣ Output signal rationalised 1.5 mV/V ± 0.5 %
- ▣ Supply voltage 10 VDC, max. 15 VDC



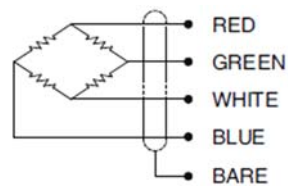
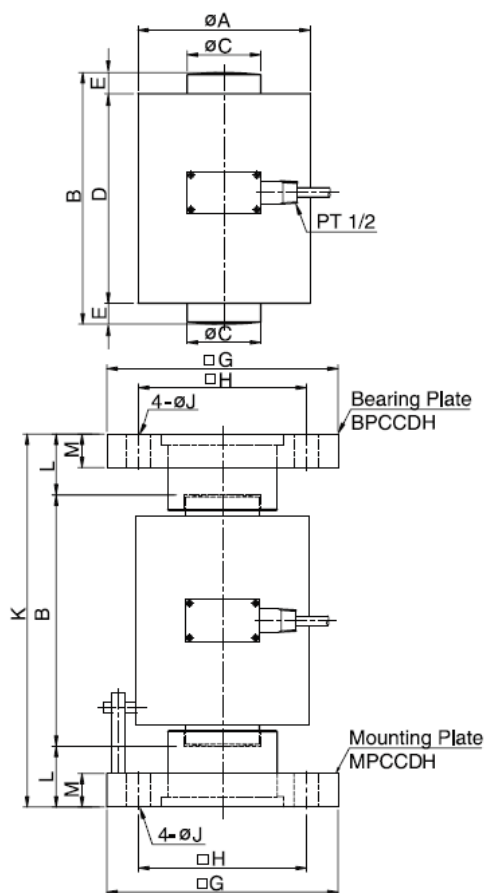
The ACCDH/ACCDHS series are designed for heavy duty weighing applications, including hoppers, tanks, silos and high capacity scales.

- Insensitive to side load
- Double convex type
- Robust high capacity design
- High alloy steel or 17-4PH stainless steel construction

▣ Specifications

Model	ACCDH	ACCDHS
Load cell material:	painting alloy steel	17-4PH stainless steel
Rated capacity (RC):	10 t, 20 t, 30 t, 50 t, 100 t, 200 t	
Non-linearity:	up to 100 t 200 t	≤ 0.1 % RO ≤ 1 % RO
Hysteresis:	up to 100 t 200 t	≤ 0.1 % RO ≤ 1 % RO
Creep, 20 min:	up to 100 t 200 t	≤ 0.05 % ≤ 1 %
Non-repeatability:	up to 100 t 200 t	≤ 0.05 % RO ≤ 1 % RO
Rated output (RO):	1.5 mV/V ± 0.5 %	
Zero balance:	≤ 1 % RO.	
Temperature effect on rated output:	≤ 0.03 % load/10 K	
Temperature effect on zero balance:	≤ 0.03 % RO/10 K	
Compensated temperature range:	-10 ... +70 °C	
Operating temperature range:	-20 ... +80 °C	
Supply voltage, recommended:	10 VDC	
Supply voltage max.:	15 VDC	
Terminal input resistance:	350 Ω ± 3.5 Ω	
Terminal output resistance:	350 Ω ± 5 Ω	
Insulation resistance, min.:	2000 M Ω at 50 VDC	
Safe overload:	150 % RC	
Ultimate overload:	300 % RC	
Environmental sealing:	meets IP67	
Electrical connection:	$\varnothing 9$ mm x 5 m (22AWG x 4-core, shielded)	

■ Dimensions and Wiring



Wiring

red	+ supply voltage
green	+ output signal
white	- supply voltage
blue	- output signal
bare	screen

Dimensions in „mm“, approx. values

These drawings are for information only and not intended for construction purpose.
Please contact us for detailed drawings.

Rated capacity	A	B	C	D	E	F	G	H	J	K	L	M	Bearing plate	Mounting plate	Weight [kg]
10 t (98.1 kN)	88	120	22	90	15	116	140	100	18	180	30	19	BPCCDH1	MPCCDH1	7.8
20 t (196.1 kN)	88	120	33	90	15	116	140	100	18	190	35	22	BPCCDH2	MPCCDH2	9.6
30 t (94.2 kN)	112	140	40	110	15	140	200	150	23	220	40	25	BPCCDH3	MPCCDH3	20.2
50 t (90.3 kN)	138	180	50	140	20	166	200	150	23	280	50	25	BPCCDH4	MPCCDH4	24.5
100 t (980.7 kN)	164	240	70	200	20	192	220	160	27	356	58	32	BPCCDH5	MPCCDH5	42.7
200 t (1961 kN)	215	260	100	210	25	243	280	220	39	396	68	40	BPCCDH6	MPCCDH6	86.4

■ Ordering Information

ACCDH-xxT ACCDHS-xxT	Capacity xx
	10 = 10 t
	20 = 20 t
	50 = 50 t
	100 = 100 t
	200 = 200 t

Due to continual product development, ALTHEN and partners reserve the right to vary the foregoing details without prior notice.