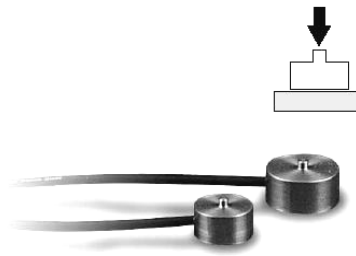


# Miniature Compression Load Cell Model ACMM

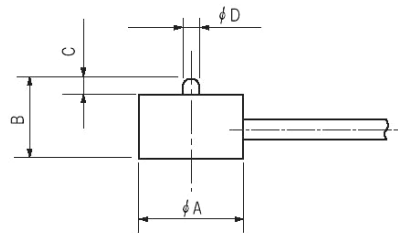
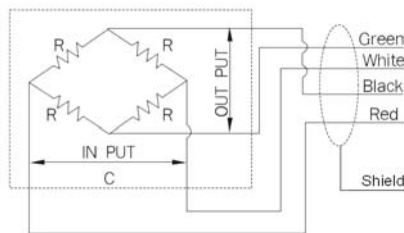
- Capacity 0...1 kgf to 0...100 kgf (0...10 N to 0...1 kN)
- Optimum suitability for weight distribution analysis
- Super compact and lightweight
- Stainless steel construction
- Competitive price



Very compact miniature strainage load cell with limitations in accuracy, but small dimensions at a very competitive price.

## Specifications

Model	ACMM		
Rated capacity (R.C.):	1 kgf (9,81 N) 10 kgf (98,07 N) 100 kgf (980,7 N)	2 kgf (19,61 N) 20 kgf (196,1 N)	5 kgf (49,03 N) 50 kgf (490,3 N)
Rated output (R.O.):	0,7...1,2 mV/V		
Non-linearity:	1,0% R.O.		
Hysteresis	1,0% R.O.		
Repeatability:	1,0% R.O.		
Zero balance:	±5% R.O.		
Terminal resistance, input:	350 Ω ±10%		
Terminal resistance, output:	350 Ω ±5%		
Temperature range, allowable:	-20...70°C		
Excitation recommended:	5 VDC		
Overload allowable:	150% R.O.		
Cable length:	4 core cable, Ø3 mm, 3 m		



## Wiring Information:

- Red: + Excitation
- White: - Excitation
- Black: + Signal
- Green: - Signal
- Bare: GND

Model	Capacity	A	B	C	D
ACMM-K001	1 kgf (9,807 N)	16	12	2	2,5
ACMM-K002	2 kgf (19,61 N)	16	12	2	2,5
ACMM-K005	5 kgf (49,03 N)	16	12	2	2,5
ACMM-K010	10 kgf (98,07 N)	20	11,5	2	2,5
ACMM-K020	20 kgf (196,1 N)	20	11,5	2	2,5
ACMM-K050	50 kgf (490,3 N)	20	11,5	2	2,5
ACMM-K100	100 kgf (980,7 N)	20	11,5	2	2,5

\*Specifications are subject to change without notice /Copyright Althen 12-05

ACMM

ALTHEN GmbH Mess- und Sensortechnik

Frankfurter Str. 150 - 152  
D-65779 Kelkheim

Tel. : +49(0)6195 70060  
Fax: +49(0)6195 700666

<http://www.althen.de>  
E-Mail: [verkauf@althen.de](mailto:verkauf@althen.de)

