

AOSBK

Shear Beam Load Cell

- Measurement ranges from 0 ... 200 kg up to 0 ... 10 t
- Tension / compression
- Non-linearity 0.03 % RO
- Output signal rationalised 3 mV/V ± 0.25 %
- Supply voltage 10 VDC, max. 15 VDC



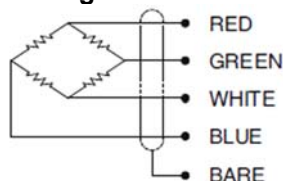
The AOSBK series single ended shear beam load cell is designed for high accuracy platform scales and a variety of process weighing applications.

- Alloy tool steel construction for high accuracy
- Electroless nickel plated for corrosion resistance
- Fully sealed to IP67

■ Specifications

Rated capacity (RC):	200 kg / 500 kg / 1 t / 2 t / 3 t / 5 t / 10 t
Non-linearity:	≤ 0.03 % RO
Hysteresis:	≤ 0.02 % RO
Creep, 20 min:	≤ 0.03 %
Non-repeatability:	≤ 0.02 % RO
Rated output (RO), rationalised:	3 mV/V ± 0.25 %
Zero balance:	≤ 1 % RO
Temperature effect on rated output:	≤ 0.03 % load/10 K
Temperature effect on zero balance:	≤ 0.03 % RO/10 K
Compensated temperature range:	-10 ... +70 °C
Operating temperature range:	-20 ... +80 °C
Supply voltage, recommended:	10 VDC
Supply voltage max.:	15 VDC
Terminal input resistance:	400 Ω ± 20 Ω
Terminal output resistance:	350 Ω ± 5 Ω
Insulation resistance, min.:	2000 M Ω at 50 VDC
Safe overload:	150 % RC
Ultimate overload:	300 % RC
Environmental sealing:	Meets IP67
Electr. connection:	200 kg to 2 t \varnothing 5 mm x 3 m (22AWG x 4-core shielded), optional 6 m 3 t, 5 t \varnothing 5 mm x 6 m (22AWG x 4-core shielded) 10 t \varnothing 7 mm x 6 m (22AWG x 4-core shielded)

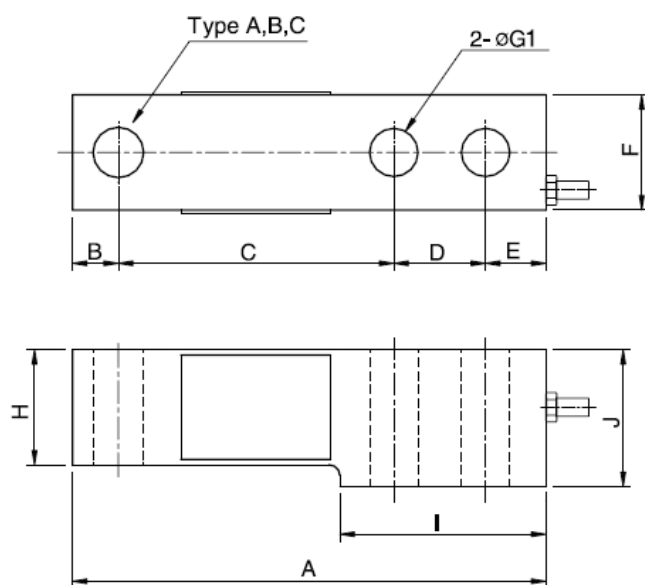
■ Wiring Information



Wiring

red	+ supply voltage
green	+ output signal
white	- supply voltage
blue	- output signal
bare	screen

■ Dimensions

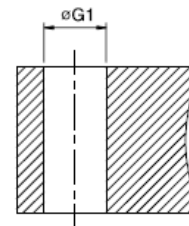


Dimensions in „mm“, approx. values

These drawings are for information only and not intended for construction purpose.
Please contact us for detailed drawings

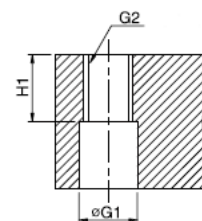
Model AOSBKA:

G1 through hole



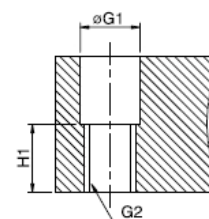
Model AOSBKB:

G2 thread



Model AOSBKC:

G2 thread



Rated capacity	A	B	C	D	E	F	G1	G2	H	H1	I	J	Weight
0.2 t to 2 t (1.96 kN to 19.6 kN)	131	12.7	76.2	25.4	16.7	32	13.5	M12x1.75P	32	16	57	38	0.8 kg
3 t to 5 t (29.4 kN to 49.0 kN)	171.5	19	95.3	38.1	19.1	38.1	20.5	M20x2.5P	38	19	76.2	44.5	1.8 kg
10 t (98.1 kN)	222.3	25.4	120.7	50.8	25.4	50.8	26.2	M24x2P	50.8	25	108	57.2	4.1 kg

■ Ordering Information

AOSBKy-xx

Model y

Rated capacity xx:

...A: with through hole	200 = 200 kg	3T = 3 t
...B: with thread top side	500 = 500 kg	5T = 5 t
...C: with thread bottom side	1T = 1 t	10T = 10 t
	2T = 2 t	

Safety note:

Depending on the application it may be essential to provide additional safety precautions like safety chains etc. for catching the load in a breakage, which cannot be excluded completely.

Due to continual product development, ALTHEN and partners reserve the right to vary the foregoing details without prior notice.