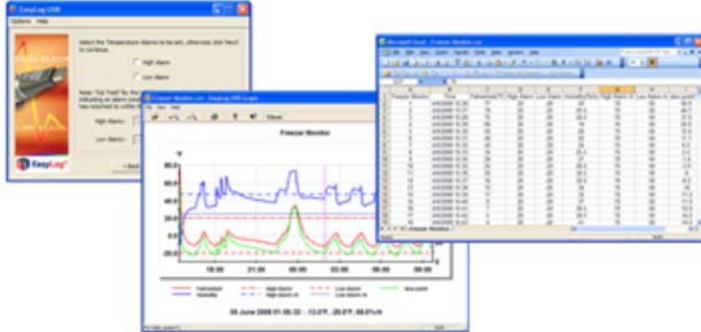


EL-WIN-USB

Free software for configuration, recording and analysis of the measurement data of EasyLog data loggers



[add to Notepad](#)

[Datasheet \(n/a\)](#)



Easy to Program and Deploy

Getting an EasyLogger product ready to acquire data is simple:

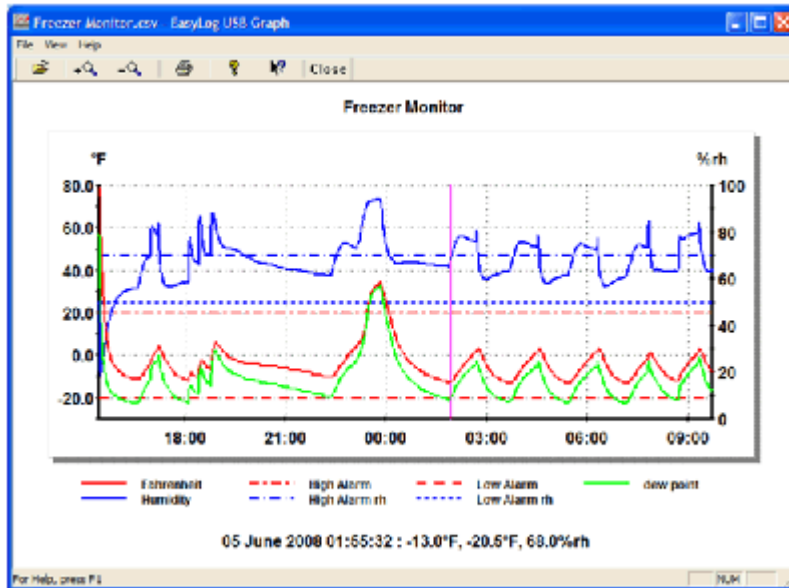
1. Remove the protective USB cover.
2. Plug the instrument into any convenient USB port (image 1).
3. Program the data logger with the provided EasyLog software:

- Give the logger a unique name.
- Select the required sample rate.
- Select high and/or low alarm thresholds.
- Select the specific date and time to begin logging.

Now remove the data logger from the USB port, replace the USB cover, and deploy the instrument wherever you need it.

Easy to Upload and Analyze Data

Whether you want to review stored data using the supplied application or using Microsoft Excel, getting meaningful results from recorded data is fast and easy:



1. Remove the protective USB cover.
2. Plug the instrument back into the PC's USB port.
3. Use EasyLog software to stop recording, access the instrument's stored data, and save it to a file that you name on the PC, all in one easy operation. The file format is Excelcompatible.
4. Immediately EasyLog's Graph utility is enabled to display all the stored data in one compressed view. 1 . A cursor allows you to determine signal magnitude and time and date of acquisition for any value, and a magnifier utility allows you to zoom in for a closer look over any range – Easy and fast.
5. For more custom analysis and report generation, simply import the stored data file to Microsoft Excel for virtually unlimited flexibility in how you view and interpret your results.

	A	B	C	D	E	F	G	H	I
1	Freezer Monitor								
2	1	4/5/2003 15:25	77	20	-20	50	70	50	56.9
3	2	4/5/2003 15:27	79	20	-20	25.6	70	50	40.7
4	3	4/5/2003 15:28	75	20	-20	25.5	70	50	31.5
5	4	4/5/2003 15:29	66	20	-20	19	70	50	22.5
6	5	4/5/2003 15:30	56	20	-20	20	70	50	15.5
7	6	4/5/2003 15:31	48	20	-20	22	70	50	11.1
8	7	4/5/2003 15:32	40	20	-20	24	70	50	6.2
9	8	4/5/2003 15:33	34	20	-20	25.5	70	50	2.4
10	9	4/5/2003 15:34	28	20	-20	27	70	50	-1.6
11	10	4/5/2003 15:35	24	20	-20	23.5	70	50	-3.9
12	11	4/5/2003 15:36	20	20	-20	32.6	70	50	-6
13	12	4/5/2003 15:37	16	20	-20	32.5	70	50	8.2
14	13	4/5/2003 15:38	13	20	-20	34	70	50	-10
15	14	4/5/2003 15:39	11	20	-20	35	70	50	-11.2
16	15	4/5/2003 15:40	9	20	-20	37	70	50	-11.9
17	16	4/5/2003 15:41	7	20	-20	38.6	70	50	-12.9
18	17	4/5/2003 15:42	5	20	-20	33.5	70	50	-14.2
19	18	4/5/2003 15:43	4	20	-20	41	70	50	-14.4

Information in the PDF datasheet (see above) may be more detailed. Due to continual product development, ALTHEN and partners reserve the right to vary the foregoing details without prior notice.

ALTHEN GmbH Meß- und Sensortechnik | Frankfurter Str. 150 | 65779 Kelkheim
 Tel.: +49 (0)61 95 - 70060 | E-Mail: info@althen.de | www.althen.de