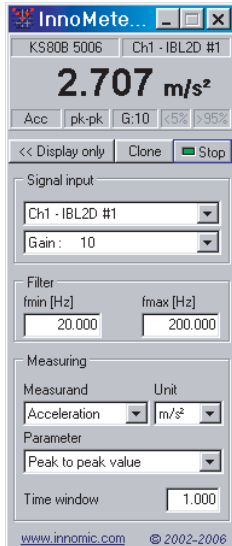


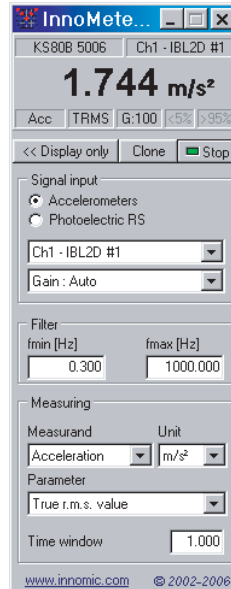
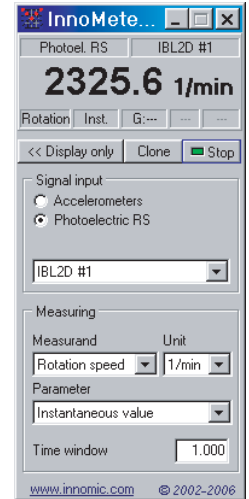


# InnoMeter<sup>®</sup> 1.4

## Vibration Meters



InnoMeter

InnoMeter Pro -  
AccelerometersInnoMeter Pro -  
Photoelectric  
Reflex Switch

### Application

When vibrations are measured as significant parameters, the InnoMeters are applied.

Rotating parts in drives, gears, pumps, fans and many other technical products cause perturbing vibrations. Impulse-like loads, e.g. from a vibratory pile driver in the construction field, generate problems as well. In numerous vibration standards - work-specific, national or even international - significant vibration parameters are defined for a reliable evaluation of the vibration situation.

These vibrations parameters are precisely measured by the InnoMeters. Consequently, the InnoMeters inform about the vibration state of the measurement object during the complete product cycle - development, manufacturing, final inspection, service. Weak spots become obvious, the success of counter measures is proven and the compliance with limits is controlled.

### Properties

The InnoMeters in Standard and in Pro Version are highly universal measuring instruments for vibration parameters. They can be adapted to parameters from numerous vibration standards. This can be achieved by means of the following settings:

- Measurands: acceleration, velocity, displacement
- Free filter adjustment 0.3 .. 2000 Hz
- Up to 32 units, metric and imperial
- Up to 6 vibration parameters

The operation, also of several instruments at the same time, is supported by the following indicators:

- Connected sensor
- Measuring point
- Overload and underload

The clone function makes it possible to operate several InnoMeters at the same time, for example to measure several parameters simultaneously.

The InnoMeter Pro is able not only to process signals from vibration sensors, but also from rpm sensors.

# ALTHEN

Meß- und Sensortechnik

**ALTHEN GmbH Mess- und Sensortechnik**

Frankfurter Strasse 150 - 152

65779 Kelkheim / Germany

Tel : +49 (0)6195 70060 Fax : +49 (0)6195 700666

E-Mail : info@althen.de

Website

<http://www.datenaufzeichnung.de>



# Technical Data

	InnoMeter Pro	InnoMeter
Signal Processing		
Signal Source	Vibration sensors Rpm sensors	Vibration sensors
Filter	Freely adjustable 0.3..2000 Hz	
Time Window	Freely adjustable 0.1..10 s	
Measurands	AC voltage Vibration acceleration Vibration velocity Vibration displacement Rotation speed	AC voltage Vibration acceleration Vibration velocity Vibration displacement
Units	V, mV, $\mu$ V, nV, pV m/s <sup>2</sup> , mm/s <sup>2</sup> , $\mu$ m/s <sup>2</sup> , nm/s <sup>2</sup> , pm/s <sup>2</sup> , g, mg, dB m/s, mm/s, $\mu$ m/s, nm/s, pm/s, in/s, dB m, mm, $\mu$ m, nm, pm, in, dB 1/min, 1/s, Hz (Rotation speed) Hz, kHz (Main frequency) % (Harmonic distortion)	V, mV, $\mu$ V, nV, pV m/s <sup>2</sup> , mm/s <sup>2</sup> , $\mu$ m/s <sup>2</sup> , nm/s <sup>2</sup> , pm/s <sup>2</sup> , g, mg, dB m/s, mm/s, $\mu$ m/s, nm/s, pm/s, in/s, dB m, mm, $\mu$ m, nm, pm, in, dB
Parameters	Instantaneous value Peak value absolute Peak value positive Peak value negative Peak-to-peak value True r.m.s. Harmonic distortion Main frequency	Instantaneous value Peak value absolute Peak value positive Peak value negative Peak-to-peak value True r.m.s.
Graphical Presentation		
Display	5 digits 0,001 .. 99999	
Refresh	1 .. 4 times per second *	
Indicators	Sensor, measuring channel, measurand, parameter, gain, overload, underload	
Width x Height	195 x 486 pixel	192 x 451 pixel
Miscellaneous		
Hold Function	Yes	
Cloneable	Yes	
Leasable	Yes	

\* Centrally managed in the InnoMaster

Changes without prior notice

October 2006