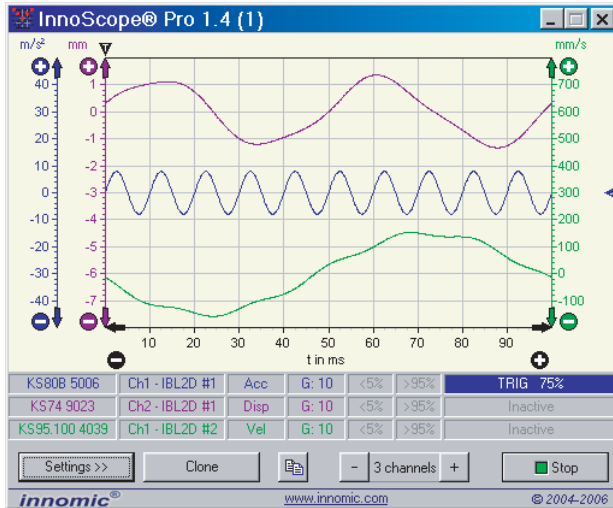


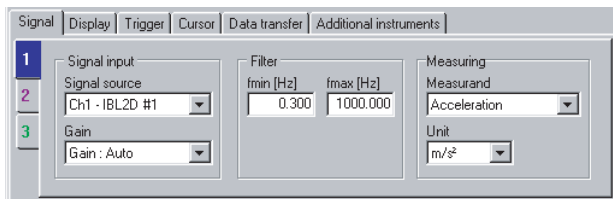


# InnoScope® 1.4

## Digital Oscilloscopes



Collapsed Settings



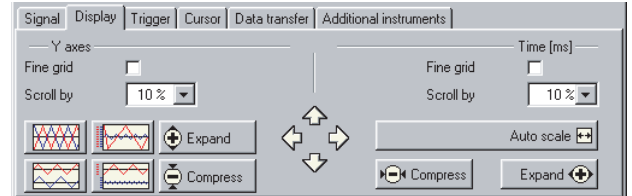
Signal Settings

### Application

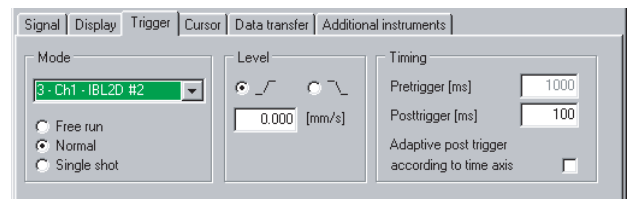
The InnoScopes allow the signals' shape analysis of fast vibration and shock processes in time domain. These processes are acquired and measured with high resolution and can be exported for documentation or post-processing.

Another field of application is the determination of natural frequencies. The measurement object is stimulated impulse-like, the InnoScope triggers the event and displays the time course of the signal. A coupled InnoAnalyzer analyzes the triggered time signal and displays it in the frequency domain simultaneously. Natural frequencies can be read off at once.

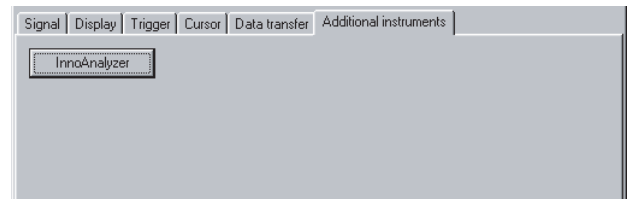
So products that are exposed to shocks can be optimized. The transport and packaging sector are only two exemplary fields of application.



Display Settings



Trigger Settings



Trigger Settings

### Properties

The InnoScopes in Standard and in Pro Version are universal digital oscilloscopes. The Pro Version additionally includes 2 integrators and is consequently able to process not only vibration acceleration, but also vibration velocity and displacement.

The InnoScopes have a high memory depth. The acquired signal can be recorded with full resolution 1 second before and until up to 10 seconds after the trigger event.

For the evaluation, there are adjustable grids as well as 2 cursors. They can be moved by mouse or positioned precisely by button. Time and measured values at the cursor position are presented numerically.

The clone function allows you to operate several InnoScopes simultaneously. For instance, different trigger conditions can be applied to one signal at the same time.

The export of data into other applications as bitmap/PNG file for documentation or as text for post processing provides additional fields of application.

**ALTHEN**

Meß- und Sensortechnik