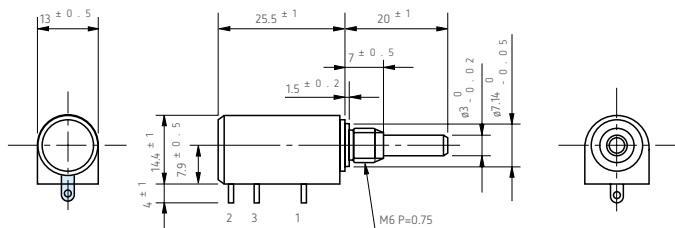




$\alpha$  12HP

Standard dimensions

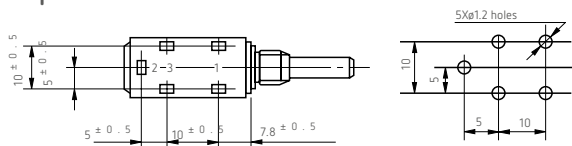
Bushingmount type With lug terminals



Model 12HP-10

With pin terminals for p.c. board

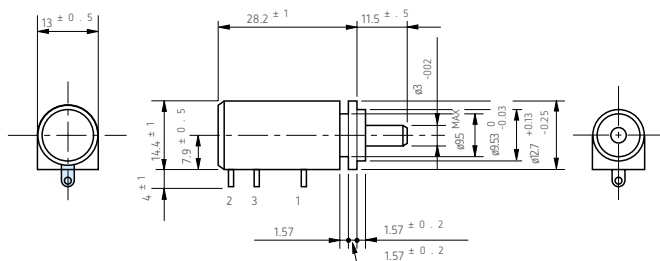
Terminal Holes Layout



Model 12HP-10P

- Note:
- 1pc. Each inner teeth washer and hex nut are attached.
  - Please process the mounting hole on the panel to be mounted with this potentiometer by the diameter of 7.14mm

Servomount type



Model 12HPS-10 (Servomount)

- Note:
- Outer dimensions of 5-turn version are same as those of 10-turn
  - Servomount type with pin terminals for p.c. board is also available

Standard Model Nos.

Bushingmount type:

With lug terminals:

12HP-5 (5-turn)

12HP-10 (10-turn)

With pin terminals for pc board:

12HP-5P(5-turn)

12HP-10P (10-turn)

Servomount type:

12HPS-5(5-turn)

10HPS-10 (10-turn)

## General Specifications

<b>Standard Resistance Range:</b>	100Ω to 50kΩ (5-turn) 100Ω to 100kΩ (10-turn)	<b>Mechanical Travel:</b>	360° Xn $\begin{matrix} +15^\circ \\ 0^\circ \end{matrix}$ (n: No. of turns)
<b>Max. Practical Resistance Value:</b>	70kΩ (5-turn) 150kΩ (10-turn)	<b>Insulation Resistance:</b>	Over 1,000 MΩ at 500 V.D.C.
<b>Total Resistance Tolerance:</b>	Standard Class ±3%(H) Precision Class ±1%(F)	<b>Dielectric Strength:</b>	1 minute at 500 V.A.C.
<b>Independent Linearity Tolerance:</b>		<b>Starting Torque:</b>	Within 3mN·m (30gf·cm) (Bushingmount type) Within 2mN·m (20gf·cm) (Servomount type)
	5-turn    10-turn	<b>Stopper Strength: Max. Torque exerted on fastening the mounting nut to the bushing:</b>	Approx. 0.15N·m (1.5kgf·cm)
	Standard Class    ±0.35%    ±0.25%	<b>Max. Working Voltage:</b>	450V
	Precision Class    ±0.2%    ±0.1%	<b>Resist. Temperature Coefficient of Wire:</b>	
	(within 5kΩ)    (±0.25%)    (±0.15%)	<b>Mass:</b>	±20p.p.m./°C Approx. 10g (both 5-turn and 10-turn)
<b>Power Rating:</b>	0.75W (5-turn) 1.5W (10-turn)		
<b>Noise:</b>	Within 100Ω E.N.R.		
<b>Electrical Travel:</b>	360° Xn ±5° (n: No. of turns)		

## Standard Resistance Values | No. Of Wire Turns | Resistance Wire Used

Resist. Value (Ω)	100	200	500	1k	2k	5k	10k	20k	50k	100k
12HP-5	9 2 0	1, 1 9 0	1, 2 5 0	1, 5 1 0	1, 7 9 0	2, 3 8 0	3, 1 2 0	3, 8 0 0	5, 4 3 0	-
12HP-10	1, 6 9 0	1, 8 5 0	2, 5 6 0	2, 5 0 0	3, 0 3 0	4, 1 7 0	4, 7 6 0	6, 2 5 0	8, 3 3 0	1 0, 8 7 0
Resist. Wire Used	Cu-Ni System			Ni-Cr System						

## Special Specifications Available

3-turn type (S12HP-3), lower resistance values (20Ω, 50Ω), shaft with front and rear extension (rear shaft with 0.8mm dia. and 10mm length), special machining on the shaft, simple sealed housing (in case of servomount type, the housing length becomes longer by 1.5mm).