



α MRA50A

Features

- 50 mm case diameter
- Magnetic absolute rotary encoder
- 551 Absolute (10 bit | 360°)
- 2.5m cable (standard) with Connector (Optional) electrical connection

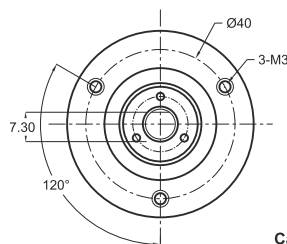
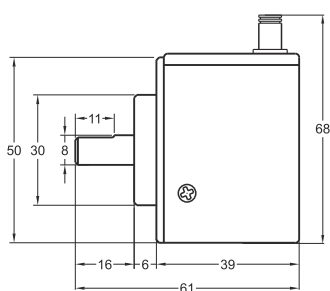
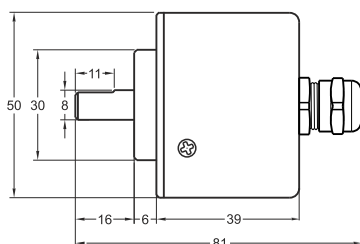


Technical Specifications

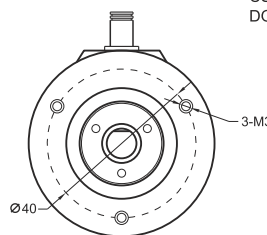
Type of Measurement	Magnetic absolute
Resolution	10 bit / 360°
Output Signal	SSI
Output Signal Type	5VTTL
Supply Voltage	8-24 VDC (Standard) or 5 VDC (Optional)
Power Consumption (without load)	< 40 mA (24 VDC)
Electrical Connections	2.5m Cable (standard), Connector (Optional)

Max. Speed	1000rpm
Rod Diameter	Ø8 mm
Rod Material	Stainless Steel
Case diameter	Ø50 mm
Case material	Aluminium Steel
Operating temperature	-20°C ... +80°C
Storage temperature	-30°C ... +90°C

Max. Permissible Shaft Loading Radial 100 N
Axial 60 N



Cable Output
+V : Brown
0V : White
CLK : Green
CSN : Yellow
DO : Gray



Model	Case Diameter	Output Signal Type	Output Type	Supply Voltage	Connector / Cable	Cable Output
(example) MRA	50A	TT	SSI	V1	2M5	R
MRA	50A : Clamping flange 50AW : Water proof	TT : TTL Absolute	SSI	V1 : 5V DC V2 : 8-24V DC	2M5 : 2,5 meter cable 5M : 5 meter cable 8M : 8 meter cable 10M : 10 meter cable	R : Radial A : Axial

07.2019 | version 0001

The information provided herein is to the best of our knowledge true and accurate, it is provided for guidance only. All specifications are subject to change without prior notification.

Althen – Your expert partner in Sensors & Controls | althensensors.com

Althen stands for pioneering measurement and custom sensor solutions. In addition we offer services such as calibration, design & engineering, training and renting of measurement equipment.

Germany / Austria / Switzerland
info@althen.de

Benelux
sales@althen.nl

France
info@althensensors.fr

Sweden
info@althensensors.se

USA / Canada
info@althensensors.com

Other countries
info@althensensors.com