



m/s² 787T
General purpose dual output sensor

SPECIFICATIONS

Sensitivity, ±5%, 25°C	100 mV/g
Acceleration range, VDC > 25 V	80 g peak
Amplitude nonlinearity	1%
Frequency response:	
±5%	1.0 - 5,000 Hz
±10%	0.7 - 10,000 Hz
±3 dB	0.5 - 12,000 Hz
Resonance frequency	22 kHz
Transverse sensitivity, max	5% of axial
Temperature response:	
-25°C	-10%
+120°C	+10%
Temperature sensor:	
Output sensitivity	10 mV/°C
Measurement range	2° to 120°C
Power requirement:	
Voltage source ¹	18 - 30 VDC
Current regulating diode ^{1,2}	2 - 10 mA
Electrical noise, equiv. g, nominal:	
Broadband 2.5 Hz to 25 kHz	700 µg
Spectral 10 Hz	10 µg/√Hz
100 Hz	5 µg/√Hz
1,000 Hz	5 µg/√Hz
Output impedance, max	100 Ω
Bias output voltage, nominal	12 VDC
Grounding	case isolated, internally shielded
Temperature range	-50° to +120°C
Vibration limit	500 g peak
Shock limit	5,000 g peak
Electromagnetic sensitivity, equiv. g, max	70 µg/gauss
Sealing	hermetic
Base strain sensitivity, max	0.002 g/µstrain
Sensing element design	PZT ceramic / shear
Weight	145 grams
Case material	316L stainless steel
Mounting	1/4-28 captive screw w/ 0.046" diameter safety wire hole
Output connector	3 pin, MIL-C-5015 style
Mating connector	3 socket, MIL-C-5015 style
Recommended cabling	3 conductor, shielded

Notes: ¹ To minimize the possibility of signal distortion during high vibration signals, 24 to 28 VDC powering is recommended. The higher level constant current source should be used when driving long cables.
² A maximum current of 6 mA is recommended for operating temperatures in excess of 100°C.
Accessories supplied: 1/4-28 captive screw; calibration data (level 2)

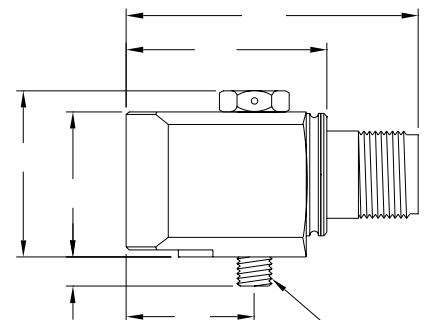
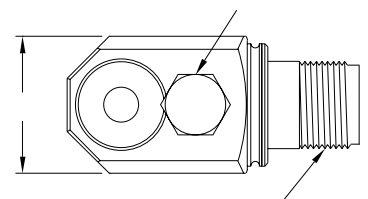


Note: Due to continuous process improvement, specifications are subject to change without notice. This document is cleared for public release.



Key features

- Accelerometer with internal temperature sensor
- Available with M12 connector
- Manufactured in ISO 9001 facility



Connections	
Function	Connector pin
accelerometer power/signal	A
accelerometer and temp sensor common	B
temp sensor signal	C
ground / case	shell

Version | 11/2019