



600 Series | A601-2A/2B

High-precision Platform Tiltmeter

The model A601-2 Platform mount tiltmeter is our new micrometer adjustment design for high precision tilt measurements. Units come with built in micrometer leveling legs, for easy installation on any horizontal surface. The A601-2 also includes two switchable gains and two low-pass filter settings. Using an absolute gravity referenced electrolytic sensor, the A601-2 delivers ultra-high sensitivity to <25 nrad with virtually zero long-term drift. Output is a stable ± 8 DC voltage (± 16 VDC differential). Rugged, reliable, and extremely accurate, the A601-2 is the preferred choice for volcano monitoring, high-precision geotechnical engineering, bridge deflection monitoring, precision metrology, radar platform leveling, and high-accuracy tilt monitoring applications worldwide.



		Model A601-2A (High-gain)	Model A601-2B (Mid-Range)
Angular Range	High-Gain:	$\pm 200 \mu\text{radians} (\pm 0.0115^\circ)$	$\pm 400 \mu\text{radians} (\pm 0.0235^\circ)$
	Low-Gain:	$\pm 2000 \mu\text{radians} (\pm 0.115^\circ)$	$\pm 4000 \mu\text{radians} (\pm 0.235^\circ)$
Scale Factor	High-Gain:	25 nradian/mV	50 nradian/mV
	Low-Gain:	250 nradian/mV	500 nradian/mV
Non-Linearity		2.0%	
Resolution		<25 nradians	<50 nradians
Time Constant		Filter on: 7.5 sec; Filter off 0.5 sec	
Kz Temp Coefficient		$\pm 3 \mu\text{radians}/^\circ\text{C}$ (typical)	
Ks Temp Coefficient		0.05%/°C (typical)	
Output		± 8 VDC (single ended); ± 16 VDC (differential)	
Channels		X-tilt, Y-tilt, Temperature	
Output Impedance		270 ohms	
Temperature Output		0.1°C/mV typical (single ended; 0°C = 0mV)	
Power		± 11 to ± 15 VDC @ ± 11 and -6 mA, 250 mV ripple max, reverse polarity protected	
Environmental		-25 to +70°C operation; -30 to +100°C storage; IP50 Seal	
Dimensions		6 x 6 x 4 inches (15 x 15 x 10 cm), 3 lb (1.4 kg)	
Materials		Anodized and painted aluminum	

Specifications subject to change without notice on account of continued product development

ORDERING CODE

A601 - 2

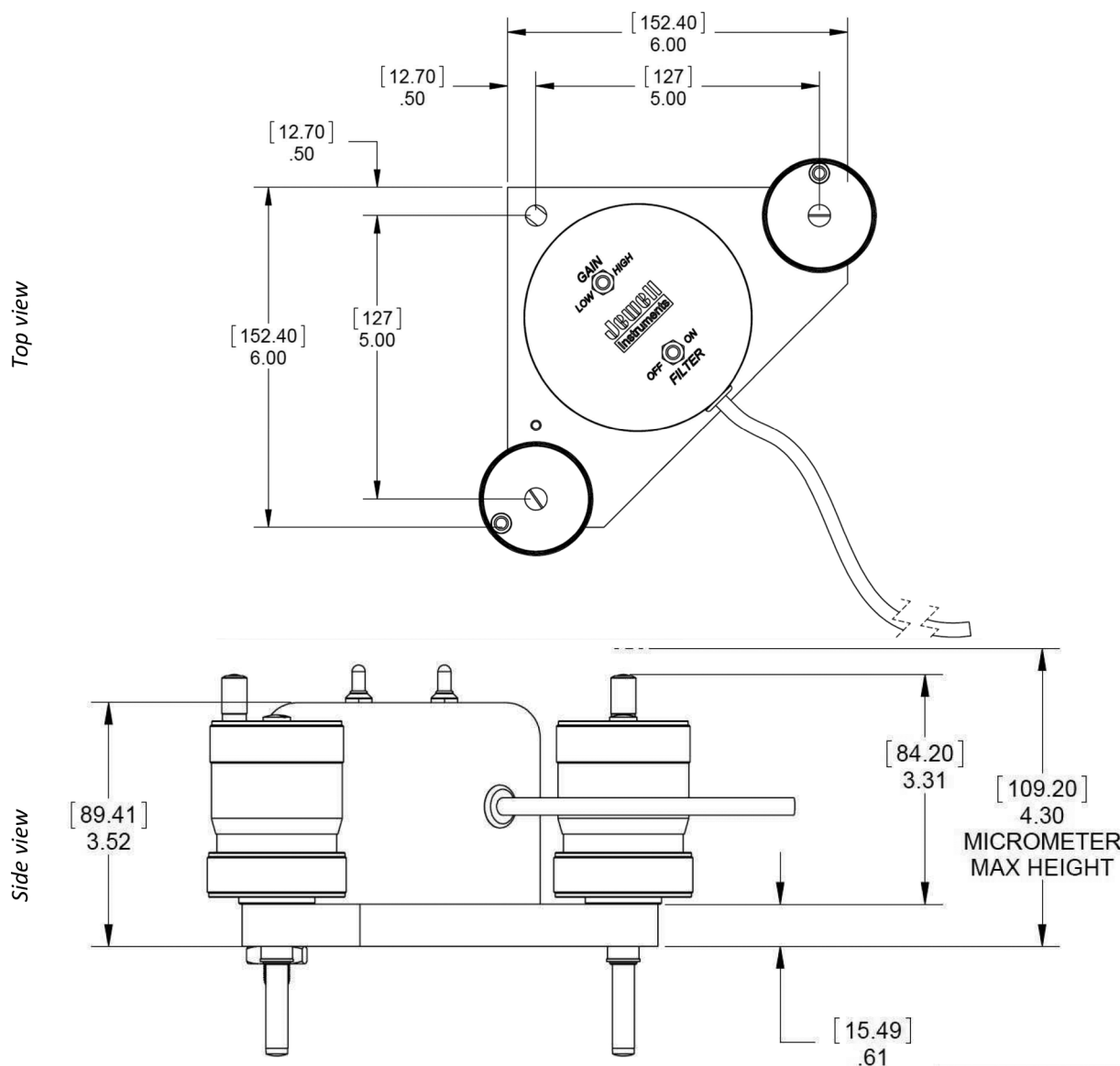
A: High Gain ($\pm 0.115^\circ$) 2 Gains, 2 Filters
B: Mid Range ($\pm 0.235^\circ$) 2 Gains, 2 Filters

ACCESSORIES

Part No.	Description
70304	Power/signal cable, 10-conductor (specify total length on order)
62301	Female panel receptacle (mates to 62302 connector included with tiltmeter)
62304	Extra female in-line receptacle (one included with tiltmeter)



DIMENSIONS:



WIRING/PIN-OUT:

Wire Color	Function	Bendix Connector
Red	+12 to +15V Power	H
Black	Power Ground	A
Violet	-12 to -15V Power	B
Blue	+Y-tilt out	G
Brown	-Y-tilt out	K
Gray	-X-tilt out	J
Green	+X-tilt out	C
White	Signal ground	E
Yellow	Temperature out	D