



kg

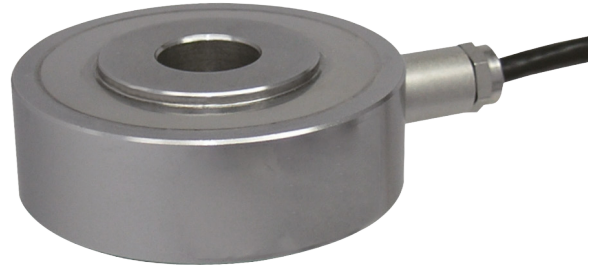
ACWLR SERIES

Thru-Hole Load Cell (0.5t ~ 5t)

FEATURES

- 17-4PH Stainless steel construction
- Fully welded seal with stainless steel cover
- Compact size with low profile

Custom designs are available in various range of capacity and dimension.



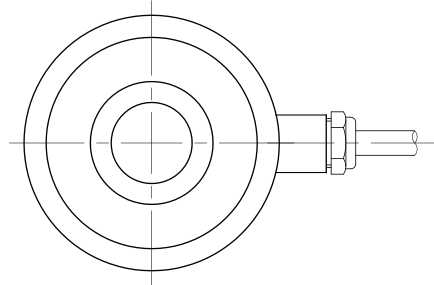
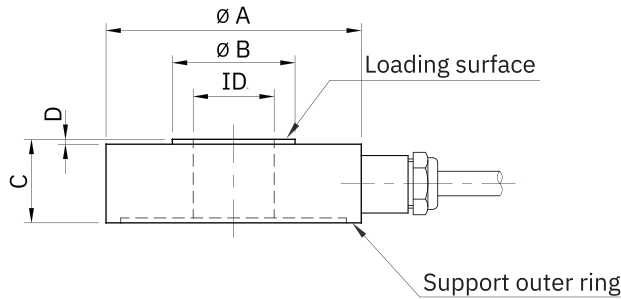
SPECIFICATIONS

MODEL	ACWLR
Rated capacity (R.C.)	0.5, 1, 2, 3, 5ton
Rated output (R.O.)	2mV/V \pm 0.5%
Non-linearity	\leq 0.5% R.O.
Hysteresis	\leq 0.5% R.O.
Non-repeatability	\leq 0.2% R.O.
Creep error	\leq 0.1% in 20min.
Zero balance	\leq 1% R.O.
Compensated temperature range	-10 ~ 70°C
Operating temperature range	-20 ~ 80°C
Temp. effect on rated output	\leq 0.05% LOAD/10°C
Temp. effect on zero balance	\leq 0.05% R.O./10°C
Terminal input resistance	830 Ohms \pm 50 Ohms
Terminal output resistance	700 Ohms \pm 10 Ohms
Insulation resistance (Min.)	2000 MOhms at 50V DC
Excitation voltage	3~12V (Recommended), 15V (Max.)
Electrical connection	Ø5mmx2m (22AWG x 4Core Shielded)
Protection class	meets IP 68
Safe overload	150% R.C
Ultimate overload	300% R.C
Material	Stainless steel (17-4PH)

* Specifications are subject to change without notice



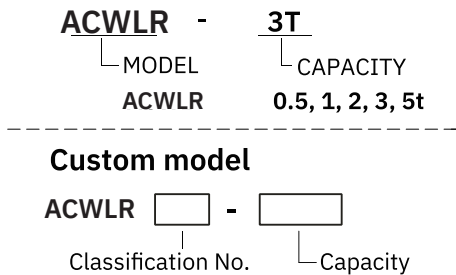
■ OUTLINE CONSTRUCTION



■ DIMENSION-mm

Capacity	ID	Ø A	Ø B	C	D	Weight (kg)
0.5, 1t (4.904, 9.807kN)	Ø13	Ø52	Ø20	20	1	0.2
2t (19.61kN)	Ø16.5	Ø64	Ø30.5	22	2	0.4
3t (29.42kN)	Ø20.5	Ø64	Ø30.5	22	2	0.4
5t (49.04kN)	Ø26	Ø72	Ø36	25	2	0.7

■ ORDERING INFORMATION



■ WIRING INFORMATION

