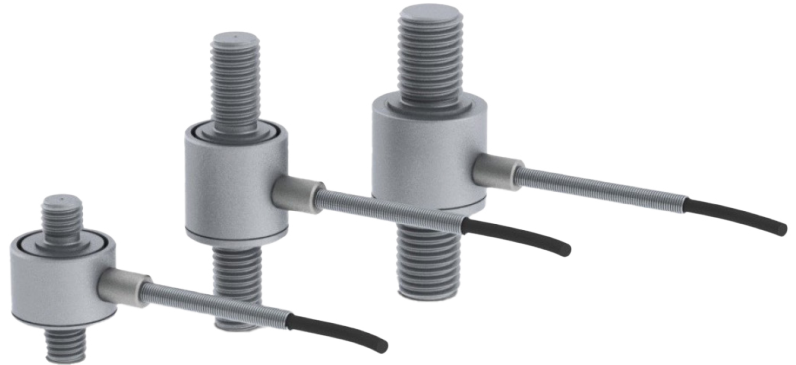


N

AILC3, AILC4 & AILC5 In Line Load Cells

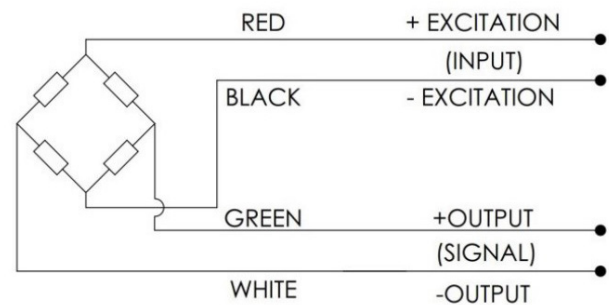
Miniature threaded In Line Load Cells are strain gauge based transducers with temperature compensation and excellent overall performance.

This type measures tensile and compressive loads up to 50kN and 10klbf with better than $\pm 0.5\%$ non-linearity..

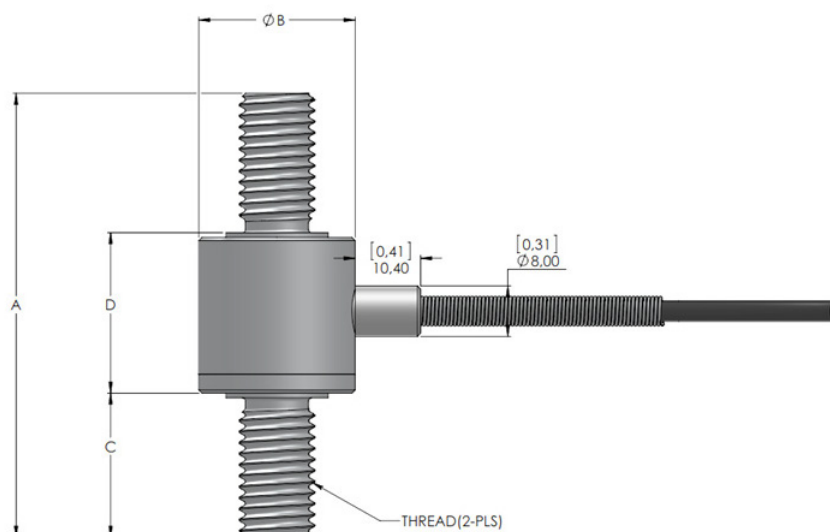


WIRING

- The load button is provided with 4x28 AWG wiring within a braided shielded cable (overall cable length 3m).
- Connector with integrated TEDS chip is available to order.

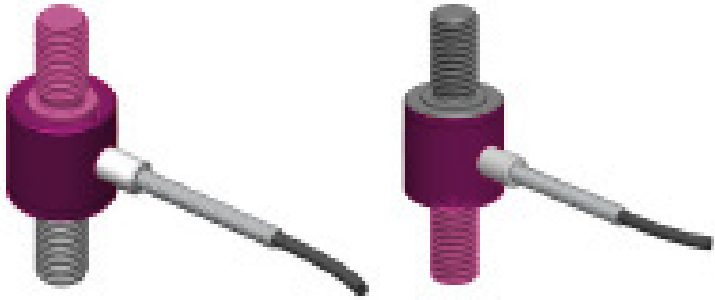
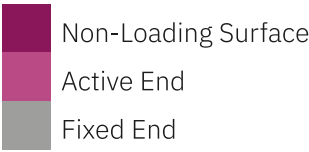


DIMENSIONS





DIMENSIONS CONTINUED



MODEL	CAPACITY	A	B	C	D	THREAD
AILC3	10kN	38.10mm[1.50"]	24.80mm[.98"]	10.65m[.42"]	17.55mm[.69"]	M10x1.5-6g
	3klbf	38.10mm[1.50"]	24.80mm[.98"]	10.65m[.42"]	17.55mm[.69"]	3/8"-24 UNF 2B
AILC4	20kN	70.40mm[2.77"]	24.80mm[.98"]	22.85mm[.90"]	25.45mm[1.00"]	M12x1.75-6g
	5klbf	70.40mm[2.77"]	24.80mm[.98"]	22.85mm[.90"]	25.45mm[1.00"]	1/2"-20 UNF 2B
AILC5	50kN	70.40mm[2.77"]	28.30mm[1.11"]	22.10mm[.87"]	26.20mm[1.03"]	M16X2.0-6g
	10klbf	70.40mm[2.77"]	28.30mm[1.11"]	22.10mm[.87"]	26.20mm[1.03"]	3/4"-16 UNF 2B

MODEL	CAPACITY	DEFLECTION NOMINAL
AILC3	10kN	0.04mm[.0015"]
	3klbf	0.04mm[.0015"]
AILC4	20kN	0.04mm[.0015"]
	5klbf	0.04mm[.0015"]
AILC5	50kN	0.08mm[.003"]
	10klbf	0.08mm[.003"]



SPECIFICATION

PARAMETER	RANGE	NOTES
Capacity	10kN, 20kN & 50kN 3klbf, 5klbf & 10klbf	With metric threads as standard With unified threads as standard
Rated Output (RO) (mV/V)	2 nominal	
Allowable Maximum Load (%)	150 full scale	No effect on performance
Non-Linearity (%)	± 0.5 of RO max.	
Hysteresis (%)	± 0.5 of RO max.	
Repeatability (%)	± 0.1 of RO max.	
Zero Balance (%)	5 of RO max.	
Zero Temperature Coefficient (%)	0.02 FS/°C	
Span Temperature Coefficient (%)	0.02 of load/°C	
Compensated Temperature (°C)	-15 to +70	Wider range available to order
Operating Temperature (°C)	-20 to +80	Wider range available to order
IP Rating	IP64	
Bridge Resistance (ohm)	350 nominal	
Excitation (V)	5, 10	