



C5 Series

FEATURES

- Ergonomic design, fingertip-operated
- Different paddle color options
- Standard spring return, with end feel points, with end lock.
- Non-contacting Hall effect technology, high reliability, long lifetime
- Design for severe environment, IP67(electronic part)
- High mechanical installation compatibility, different installation distance



APPLICATIONS

- Industrial remote controller
- Control panel
- Armrest box

SPECIFICATIONS

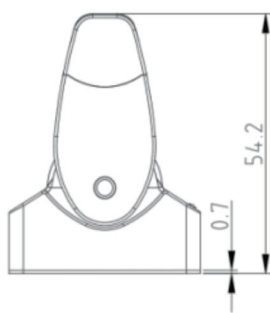
Mechanical data	
Travel angle	±30°
Operating force ¹	Spring return 1.8-2.8N (Light feel) 4.0-5.0N (Heavy feel)
	End feel point 1.0-3.0N(Light feel) 3.0-4.5N(Heavy feel)
	End lock 1.8-5.5N(Light feel) 4.0-7.5N(Heavy feel)
Max. allowable operating force	150N
Mechanical life	>5 million cycles (Without lock function) >2 million cycles (With lock function)
Product weight	Appr. 40g
Electrical data	
Supply voltage(Vs)	5.0±0.5Vdc or 9~32Vdc
Power current consumption	<11MA (per channel)
Center voltage	2.5V±4%Vs
Output linearity voltage tolerance	±3%
Maximum overload voltage	20Vdc
Maximum Reverse voltage	-10Vdc
Load resistance	10KΩ
Environmental data	
Operating temperature	-40°C~+85°C
Storage temperature	-40°C~+85°C

SPECIFICATIONS (CONTINUED)

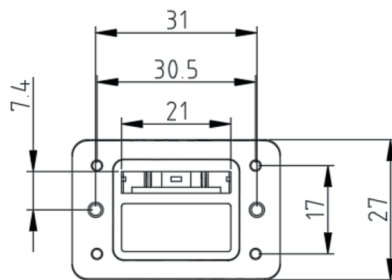
Protection class	IP ratings may vary from model to model for more information, please consult our sales staff
EMC	EN IEC 6100-6-4-2019, 30MHz-1GHz EN IEC 6100-6-2-2019, 80MHz-6GHz
Impact	IEC60068-2-27,50g,11ms, 3 times/direction impact, in total 6 directions
Vibration	IEC60068-2-64, random vibration, 0.13gn, 100Hz-200Hz, each axis lasts for one hour

¹ The measuring point is 30mm from the pivot center

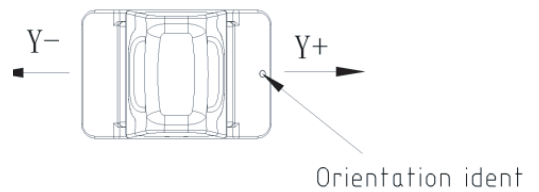
OUTLINE DIMENSIONS (UNIT:mm)



Dimensions

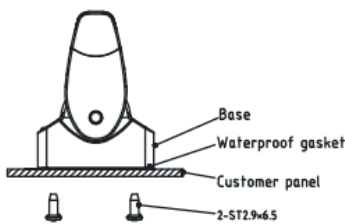


Bottom dimensions

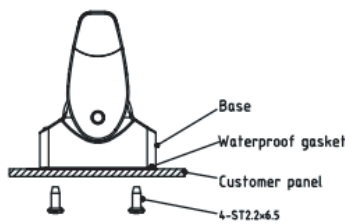


Orientation ident

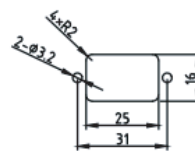
MECHANICAL INSTALLATIONS



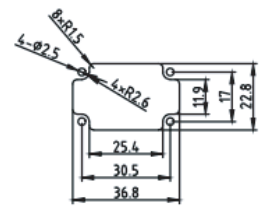
2 holes Installation M1



4 holes Installation M2



M1 cut-out



M2 cut-out

ELECTRICAL CONNECTIONS

No.	Color	Voltage (5Vdc)	Voltage (9~32V)
1	Red	----	VCC
2	Orange	VCC	Retain
3	Black	GND	GND
4	blue	A-out	A-out
5	Yellow	B-out	B-out

ORDER GUIDE

C5		Single-axis joystick					
	Code	Operation mode					
	S	Spring return					
	F	Spring return, end feel points at $\pm 23^\circ$					
	L	Spring return, end lock at $\pm 23^\circ$					
	Code	Operating force					
	L	Light feel					
	H	Heavy feel					
	Code	Output signal					
	H11	Supply voltage 5Vdc, 10%~50%~90%Vs output					
	H13	Supply voltage 5Vdc, 20%~50%~80%Vs output					
	H14	Supply voltage 5Vdc, 25%~50%~75%Vs output					
	H21	Supply voltage 5Vdc, 10%~50%~90%Vs and 90%~50%~10%Vs redundant output					
	H23	Supply voltage 5Vdc, 20%~50%~80%Vs and 80%~50%~20%Vs redundant output					
	H24	Supply voltage 5Vdc, 25%~50%~75%Vs and 75%~50%~25%Vs redundant output					
	L11	Supply voltage 3.3Vdc, 10%~50%~90%Vs output					
	W11	Supply voltage 9~32Vdc, 0.5~2.5~4.5V ratiometric output					
	W13	Supply voltage 9~32Vdc, 1~2.5~4V ratiometric output					
	W14	Supply voltage 9~32Vdc, 1.25~2.5~3.75V ratiometric output					
	W21	Supply voltage 9~32Vdc, 0.5~2.5~4.5V and 4.5~2.5~0.5V redundant ratiometric output					
	W23	Supply voltage 9~32Vdc, 1~2.5~4V and 4~2.5~1V redundant ratiometric output					
	W24	Supply voltage 9~32Vdc, 1.25~2.5~3.75V and 3.75~2.5~0.5V redundant ratiometric output					
	Code	Paddle Color					
	1	Black RAL 9005					
	2	Blue RAL 5010					
	3	Yellow RAL 1023					
	4	Green RAL 6038					
	5	Grey RAL 7042					
	Code	Mount					
	M1	Self-tapping screw st2.9, 2 holes mounting					
	M2	Self-tapping screw st2.2, 4 holes mounting					
	Code	Wiring					
	L	Cable wiring (AF200, AWG28#, length 350mm)					
	C	Connector (AF200, AWG28#, length 110mm)					
C5	S	L	H11	1	M1	L	Complete Type Specification

The information provided herein is to the best of our knowledge true and accurate, it is provided for guidance only. All specifications are subject to change without prior notification.

Althen is the innovative joystick expert that creates integrated joystick and measurement solutions for the creators of tomorrow | althencontrols.com

In addition we offer services such as calibration, repairs, design & engineering, training and renting of measurement equipment.