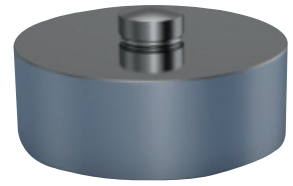




kg

CDIT-1 Series



OLCM SYSTEMS
Solutions in Load Cell Technology

AUTHORIZED DISTRIBUTOR

FEATURES

- Ranges: 50 to 5000kg
- Low height/profile
- Stainless steel construction
- Environmentally sealed to IP67

The CDIT-1 series of load cells has been designed for a wide range of force measurement and weighing applications where space is limited. The CDIT-1 is constructed from stainless steel and has a fully welded construction, offering a high level of corrosion resistance making it suitable for use in harsh environments.

Available in ranges covering 50kg to 5000kg, there are many applications ideally suited to the CDIT-1, including restricted height weighing applications, general force measurement and press calibration. LCM Systems can provide the CDIT-1 on its own or combined with any of our instrumentation range, to offer a more complete package. Please consult our technical department for any advice required on suitable instrumentation solutions.

TYPICAL APPLICATIONS

- Process measurement & control
- Automotive testing
- Low profile weighing systems

AVAILABLE OPTIONS

- TEDS option (when used with TR150 handheld display)

SPECIFICATIONS

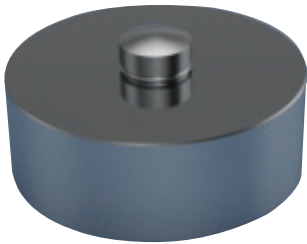
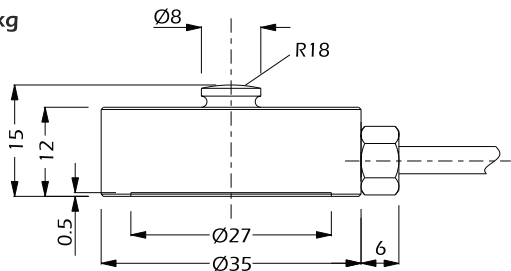
Rated load (kg)	50, 100, 250, 500, 1000, 2500, 3500, 5000
Nominal sensitivity	2mV/V at rated load
Sensitivity tolerance	$\leq \pm 0.2\%$ of rated load
Temperature effect on zero	$\leq \pm 0.003\%$ per °C
Temperature effect on sensitivity	$\leq \pm 0.0025\%$ per °C
Linearity	$\leq \pm 0.2\%$ of rated load
Hysteresis	$\leq \pm 0.2\%$ of rated load
Repeatability	$\leq \pm 0.05\%$ of rated load
Input resistance	400Ω $\pm 20\Omega$
Output resistance	350Ω $\pm 2\Omega$
Insulation resistance	>5GΩ
Zero balance	$\leq \pm 1\%$ of rated load
Recommended supply voltage	10V (1-15V nominal, 18V maximum)
Overload range	150%
Breaking load	>300%
Maximum transverse load	50%
Maximum permissible dynamic load	50%
Displacement at nominal load	~0.2mm
Temperature nominal range	-10 to +40°C
Service temperature	-20 to +70°C
Storage temperature	-20 to +80°C
Environmental protection level	IP67

SPECIFICATIONS (CONTINUED)

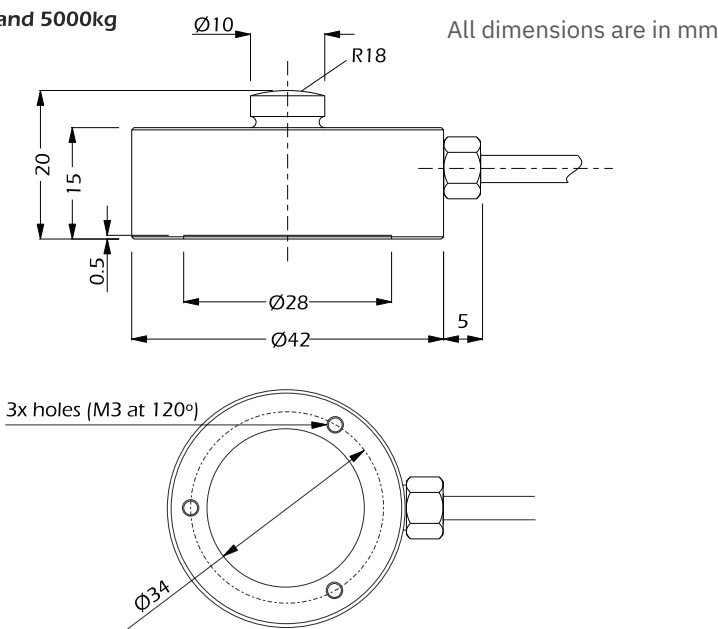
Connection type	3 metres PVC screened cable, via gland cable	
Wiring connections	+supply: Red +signal: White	-supply: Black -signal: Yellow

DIMENSIONS

50kg to 2500kg



3500kg and 5000kg



Rating (kg)	Part Number	Weight (g)	Resolution (kg)
50	CDIT-1-50	130	0.1
100	CDIT-1-100	130	0.1
250	CDIT-1-250	130	0.2
500	CDIT-1-500	130	0.5
1000	CDIT-1-1000	130	1
2500	CDIT-1-2500	130	2
3500	CDIT-1-3500	200	2
5000	CDIT-1-5T	200	5

Note: When paired with instrumentation, accuracy figures may become subject to system inaccuracies. Please refer to calibration certificate for actual performance.