



N **FTH Shear Beam Loadcell**

FEATURES

- Capacity from 5000 kg to 10000 kg
- Special steel
- Combined error $\leq \pm 0.1\%$
- IP68 protection rating



Manufactured according to OIML R60 standards



SPECIFICATIONS

CAPACITY	kg	NET WEIGHT (kg)
	5000	15.5
	10000	16.2

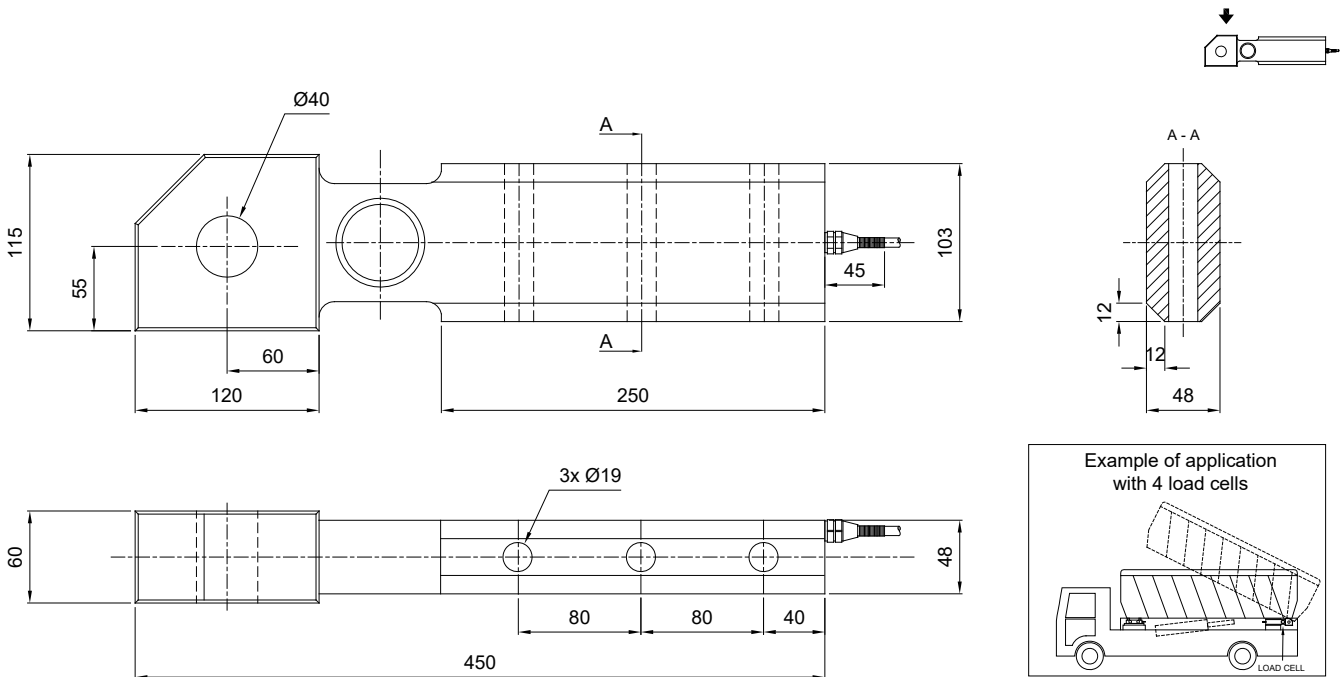
CERTIFICATIONS

- EAC** Complies with the Eurasian Customs Union standards
- UKCA** Equivalent of the CE marking for the United Kingdom

CERTIFICATIONS ON REQUEST

✓	Linearity test
Ex	ATEX II 1GD (zone 0-1-2-20-21-22) (CE - UKCA)
IECEx	IECEx (zone 0-1-2-20-21-22)
EAC Ex	Complies with the Eurasian Customs Union standards for use in potentially explosive atmospheres

DIMENSIONS (mm)



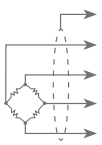
TECHNICAL FEATURES

Material	Special steel
Nominal load (E max)	5000 - 10000 kg
Combined error	≤±0.1%
Protection rating	IP68

Rated output	1 mV/V ±0.5%	Input resistance	400 Ω ±20
Temperature effect on zero	0.005% °C	Output resistance	352 Ω ±3
Temperature effect on span	0.005% °C	Zero balance	±2%
Compensated temperature range	-10 °C / +40 °C	Insulation resistance	≥5000 MΩ
Operating temperature range	-30 °C / +70 °C	Safe overload (% of full scale)	150%
Creep at nominal load in 30 minutes	0.1%	Ultimate overload (% of full scale)	300%
Max supply voltage without damage	15 V	Deflection at nominal load	0.4 mm

ELECTRICAL CONNECTIONS

Cable length	10 m
Cable diameter	6 mm
Cores	6 x 0.24 mm ³



SHIELD	
+ SIGNAL	GREEN
+ EXCITATION	RED
+ REF./SENSE	BLUE
- SIGNAL	WHITE
- EXCITATION	BLACK
- REF./SENSE	YELLOW