



bar **MPM4760**

FEATURES

- Precise digital temperature compensation, wider compensation range;
- Optional data display(max.and min. measure value,percentage and output current display);
- Special wider temperature LCD indicator (-30°C ~80°C);
- 2-wire 4mA~20mA DC current loop output;
- RS485 communication protocol;
- No power calibration,range shrinking, factory value restoring available;
- Compact size,max.diameter only 76mm;
- Indicator rounded clockwise or unclockwise 90°,all kinds of interfaces available;
- Battery power supply available.



MICROSENSOR

AUTHORIZED DISTRIBUTOR

MPM4760 Pressure Transmitter is a new-developed digital intelligent transmitter with high accuracy & good stability, and can provide prompt measurement and displaying with the update of measured differential pressure.

The transmitter adopts the latest research results of special wide temperature LCD display and digital technology in sensor manufacture industry, combining with the most advantaged production technologies of piezoresistive pressure pressure transmitters,precise digital temperature compensation and non-linearity modification technology to ensure the high accuracy and good stability of pressure measurement. The transmitter strictly conforms to ISO9000 international quality production system, could be used for the precise measurement of flowing pressure in various industries.

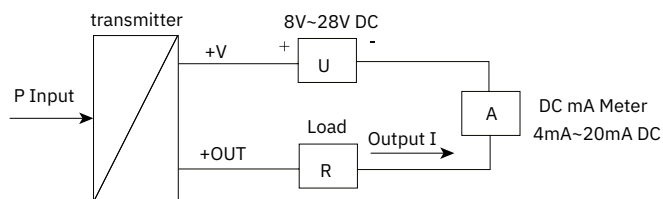
SPECIFICATIONS

Measure range	-1bar...0bar~0.1bar...1000bar
Overpressure	1.5 times FS or 1100bar (Take the minimum value)
Total Accuracy	±0.25%FS
Stability	±0.2%FS/YEAR
Compensated Temp.	-10°C ~70°C
Working Temp.	-30°C ~80°C
Storage Temp.	-40°C ~85°C
Power Supply	8V~28V DC or Battery supply
Output signal Standard	Analog 4mA~20mA DC,2-wire; Digital RS485 interface
Battery supply with RS485 output	Digital RS485 interface
RS485 interface	ASCII agreement or MODBUS RTU, BUS with 99 transmitters
Load Resistance (Ω)	(U-8V)/0.02A, U is power voltage(standard)
Display Range	-19999~19999 LCD Display
Insulation	50V, 100M
Shock	20g, 20Hz~5000Hz
Impact	20g, 11ms
Protection	IP65
Weight	~420g
Housing	Stainless steel
Diaphragm	Stainless steel 316L
O-Ring	Viton

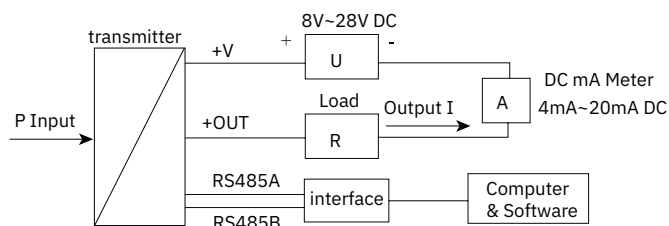
COMMUNICATION CONNECTION

Output Signal	Function	Pins	Cable Color
4mA~20mA DC,2-wire	+V	1	Black
	+OUT	2	Red
Communication interface	RS485A	3	Yellow
	RS485B	4	White

The electrical connection of transducer with 2-wire,4mA~20mA DC output to see below.

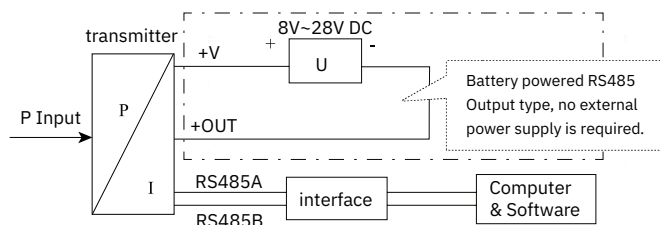


The electrical connection of transducer with 4mA~20mA DC output and RS485 to see below.



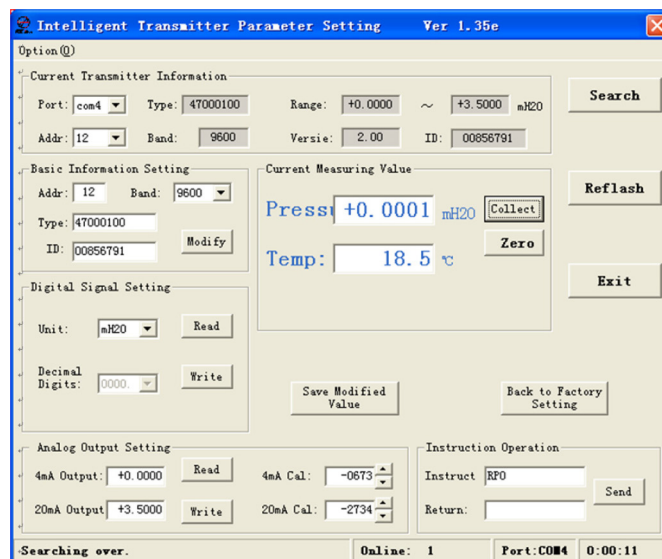
when 4mA~20mA DC output and RS485 are used at the same time, signal 485 may interfere 4mA~20mA DC output signal. The influence is related to communication speed and frequency.

The electric connection only to RS485 is to see below:

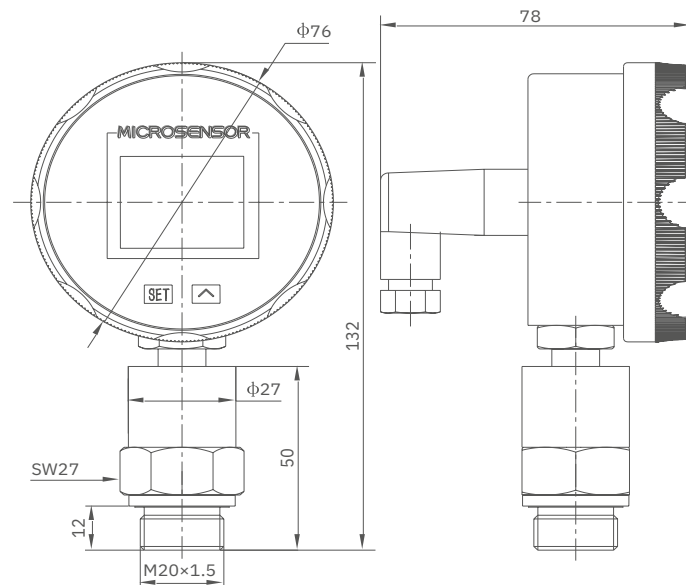


ASSISTANT SOFTWARE MS SETONLINE SOFTWARE

Through RS485 conversation module, the user could read inner basic information for RS485 interface transmitter (Includes model number, ID number, range, unit, etc.) and display pressure value, reset operation, set analog output, set meter address, etc.



OUTLINE CONSTRUCTION AND INSTALLATION (UNIT:mm)



ORDER GUIDE

MPM4760		Differential Pressure Transmitter					
		Range	-1bar...0bar~0.1bar...1000bar				
		[0~X]bar	X: the actual measured pressure				
			Code	Power Supply			
			V _d	8V~28V DC			
			V _b	Battery power supply			
				Code	Output signal		
				E	4mA~20mA DC (@V _d)		
				R ₄	ASCII agreement (@V _d or V _b)		
				R ₈	MODBUS RTU (@V _d or V _b)		
					Code	Construction material	
						Diaphragm	Pressure port
						Diaphragm	
				22	SS 316L	SS	SS
				24	SS 316L	SS 316L	SS 316L
					Code	Others	
					C1	M20×1.5 male, face type seal	
					C3	G1/2 male	
					C4	G1/4 female	
					C5	M20×1.5 male, waterline seal	
					PC1	PC 1 Flush diaphragm, M20×1.5 male	
					PC3	PC 3 Flush diaphragm, G1/2 male	
					G	Gauge	
					S	Sealed gauge	
					A	Absolute	
MPM4760	[0~1]bar	V _d	ER ₄	22	C4	the whole spec.	

- Notes:
- 1. Battery powered products have no output of 4mA~20mA DC;
 - 2. The measurement range of flush diaphragm type transmitter is 0 ~ 0.7bar...350bar.
 - 3. The battery is 3.6V lithium battery module;
 - 4. For special requirements, please contact us and specify them in the order.