



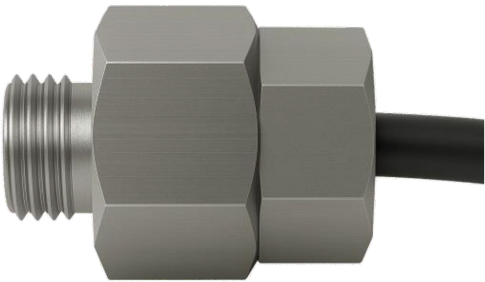
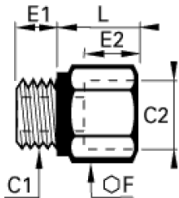
bar

PSC-TX-YYYY-A

Compensated pressure sensor – 0-5V Output

28 mm – Operating temperature: -40 - 150C°

- C1: G1/4
- C2 (mm): G1/2
- E1 (mm): 8
- E2 (mm): 15.6
- F (mm): 27 A/F
- L (mm): 20.5
- Weight (kg): 0.062



SENSORADE
Miniaturized aerodynamic flow measurement

FEATURES

- Outer diameter 28 mm
- From 100 to 3000 psi Absolute pressure sensor
- Wide temperature compensation ranges up to 150C°
- Customized solution possible
- 0-5V output (0 – YYYY PSI)
- 1ms response time
- Output can be slightly adjusted for special requests
- Shielded wire: TAU-3219.04
- Wire length: 1m

APPLICATIONS

- Instrumentation (ie: Automotive, Aviation...)
- Aerodynamic testing (ie: Wind tunnel)
- Industrial process monitoring
- Pumps and Compressors
- Leak detection
- Oil and gas

MODEL DEFINITION

- T: T1: G3/8
T2: G1/4
- YYYY: pressure range in PSI (100,3000)
- A: absolute pressure measurement
- High temperature up to 150C°

WIRE COLOR CODE

BLACK	GND
RED	5V
WHITE	Output



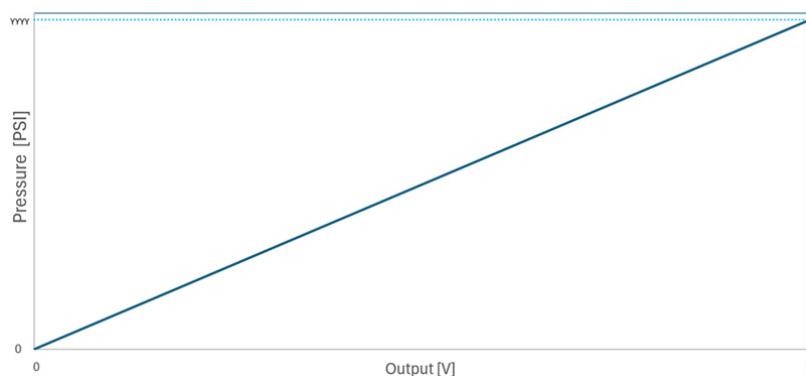


SPECIFICATIONS

Pressure range	Burst Pressure
0 → 100 PSI	300 PSI
0 → 300 PSI	900 PSI
0 → 1000 PSI	3000 PSI
0 → 3000 PSI	9000 PSI

Characteristic		Minimum	Typical	Maximum	Unit
Span ⁴	0 → 100 PSI	4.9	4.95	5	V
	0 → 300 PSI	4.9	4.95	5	
	0 → 1000 PSI	4.9	4.95	5	
	0 → 3000 PSI	4.9	4.95	5	
Zero Offset		-0,5		0,5	% FS
Total error band (On full compensation range)		-1		1	% FS
Accuracy BFSL ¹		-0.2		0.2	% FS
Operating Temperature ²		-40		+150	°C
Compensated Temperature ²		+20		+150	°C
Supply Voltage ³		4.5	5	5.5	V
Supply current		2	3	5	mA
Load allowed		>2			kOhm
Startup time		2		5	ms
Response time			1		ms

COMPENSATION RESULT:



REMARKS:

- Unless otherwise specified: All above values are specified @25°C and with a power supply of 5V.
- System can be recalibrated by Sensorade.

1| Accuracy @30 Celsius; 2| TMCL qualification tests – JEDEC JESD22-A104 « temperature cycling » @ Tmax;

3| Output will change if V≠5V; 4| Span can be modified for a special request