



TC10 Series

FEATURES

- Compact design, thumb-operated
- Spring return
- Non-contacting Hall effect sensor, high reliability, long lifetime
- Optional supply voltage 9~32Vdc
- IP67 (electronic part)

APPLICATIONS

- Industrial remote controller
- Control panel

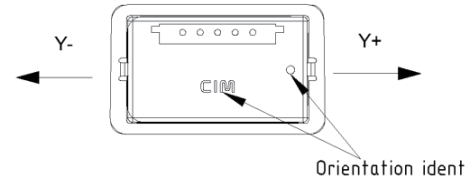
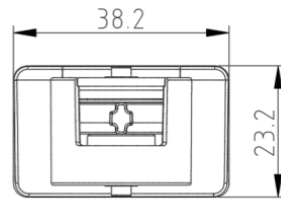
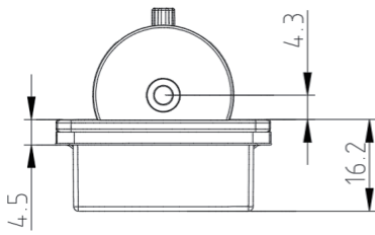


SPECIFICATIONS

Mechanical data	
Travel angle	±30°
Operating force ¹	2.4~5.8N
Service life	5 million cycles
Product weight	35g
Electrical data	
Supply voltage(Vs)	5.0±0.5Vdc or 9~32Vdc
Power current consumption	<11mA (per channel)
Center voltage	2.5±0.1Vs
Output linearity voltage tolerance	±3%
Maximum overload voltage	20Vdc
Maximum Reverse voltage	-10Vdc
Load resistance	>10KΩ
Insulation resistance	>1000MΩ
EMC	100V/m
Environmental data	
Operating temperature	-20°C~+70°C
Storage temperature	-40°C~+85°C
Protection class	IP ratings may vary from model to model, for more information, please consult our sales staff

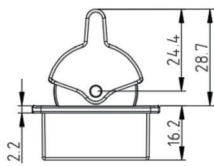
¹ The measuring point is 16mm from the pivot center

OUTLINE DIMENSIONS (UNIT:mm)

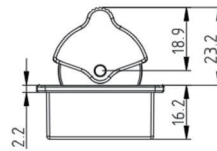


Dimensions

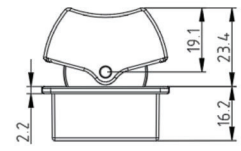
Orientation mark



PL handle



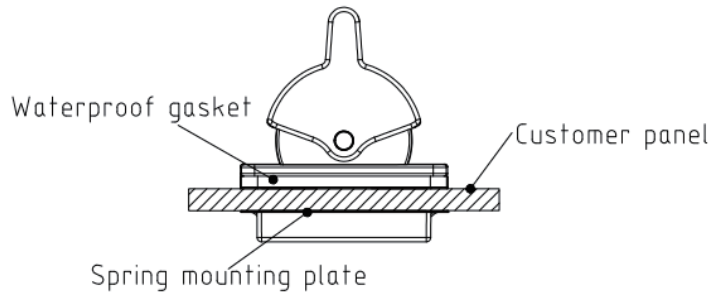
PS handle



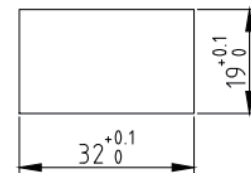
R handle

MECHANICAL INSTALLATIONS

Note: The thickness of the panel ≤3mm



Mounting diagram



Panel cut-out dimensions

ELECTRICAL CONNECTIONS

No.	Color	Hall Effect	Redundant hall effect
1	Red	-----	9~32Vdc
2	Black	0Vdc	0Vdc
3	Purple	5Vdc	Reserved (for manufacturer)
4	Blue	A-out	A-out
5	Yellow	-----	B-out

ORDER GUIDE

TC10		Single Axis Joystick			
		Code	Operation mode		
		C	Center operation (forward and backward direction)		
		E	From Y-to Y+ direction (end-to-end direction)		
			Code	Output signal	
			H11	Supply voltage 5Vdc, 10%~50%~90%Vs output	
			H21	Supply voltage 5Vdc, 10%~50%~90%Vs and 90%~50%~10%Vs redundant output	
			W11	Supply voltage 9~32Vdc, 0.5~2.5~4.5V ratiometric output	
			W21	Supply voltage 9~32Vdc, 0.5~2.5~4.5V and 4.5~2.5~0.5V redundant ratiometric output	
				Code	Handle options
				R	Rocker actuator
				PL	Paddle actuator, long handle
				PS	Paddle actuator, short handle
				Code	Wiring
				L	Cable wiring (AF200, AWG28#, length 300mm)
TC10	C	H11	R	L	Complete Type Specification

The information provided herein is to the best of our knowledge true and accurate, it is provided for guidance only. All specifications are subject to change without prior notification.

Althen is the innovative joystick expert that creates integrated joystick and measurement solutions for the creators of tomorrow | althencontrols.com

In addition we offer services such as calibration, repairs, design & engineering, training and renting of measurement equipment.

Benelux
sales@althen.nl

Germany/Austria/Switzerland
info@althen.de

France
info@althensensors.fr

Sweden
info@althensensors.se

USA/Canada
info@althensensors.com

Other countries
info@althensensors.com