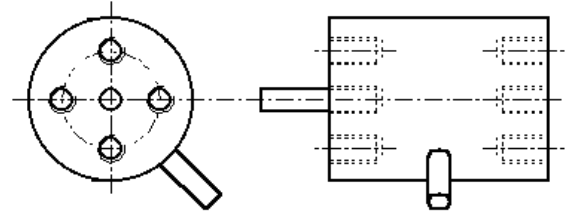




## Nm ATF311

### Description

- Measurement ranges 0 ... 2 Nm to 0 ... 1000 Nm
- Custom non-linearity
- Custom output signal
- Custom supply voltage



The static torque transducer series ATF311 is manufactured to specific requirements with ranges between 2 Nm and 1000 Nm. For lower ranges please see series ATF315.

### Specifications

Torque ranges:	customised from 0 ... 2 Nm to 0 ... 1000 Nm
Zero load output:	$\pm 4\%$ RT
Temperature effect on rated output:	$\pm 0.005\%$ AT/K
Temperature effect on zero load output:	$\pm 0.01\%$ RT/K
Compensated temperature range:	-10 ... +50 °C
Operating temperature range:	-10 ... +80 °C
Environmental sealing	IP65
Cable length	2 m

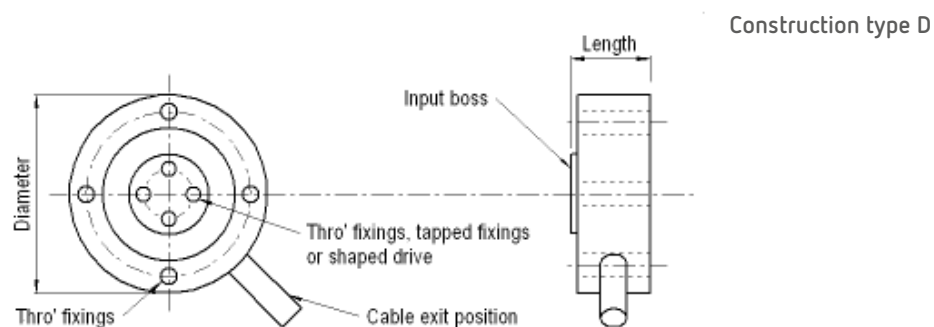
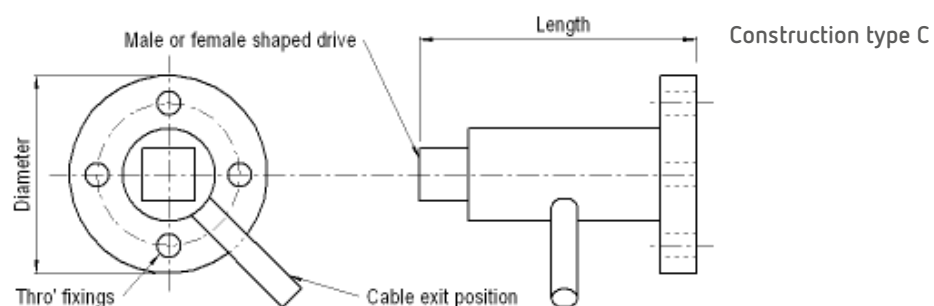
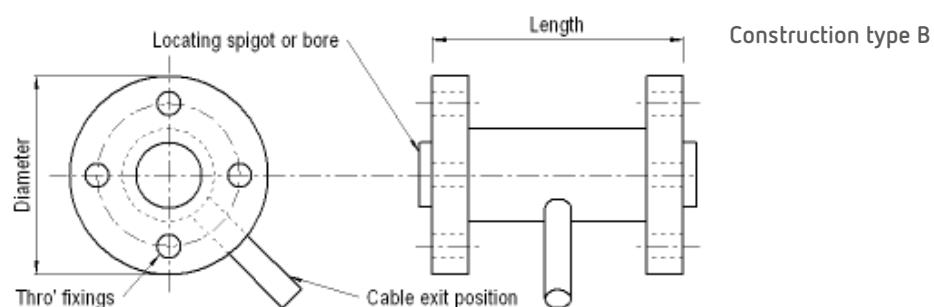
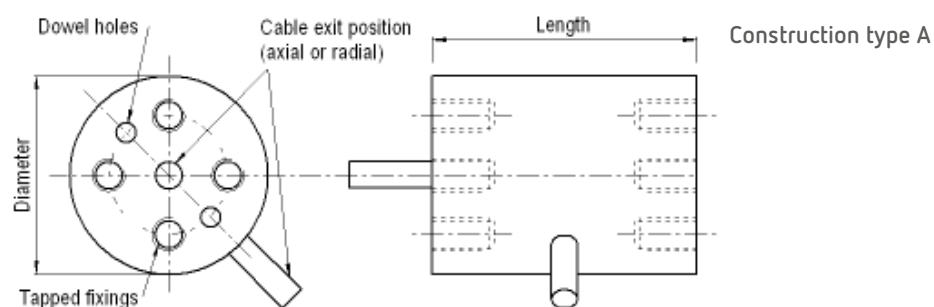
#### Notes:

1. RT = rated torque
2. AT = applied torque
3. Temperature coefficients apply over the compensated range.

### Electrical Connections

The ATF311 is fitted with 2 m cable.

## Construction Types



Due to continuous product development, ALTHEN and partners reserve the right to vary the foregoing details without prior notice.

Page 2 / 2

The information provided herein is to the best of our knowledge true and accurate, it is provided for guidance only. All specifications are subject to change without prior notification.

**Althen – Your expert partner in Sensors & Controls | [althensensors.com](http://althensensors.com)**

Althen stands for pioneering measurement and custom sensor solutions. In addition we offer services such as calibration, design & engineering, training and renting of measurement equipment.

Germany/Austria/Switzerland  
[info@althen.de](mailto:info@althen.de)

Benelux  
[sales@althen.nl](mailto:sales@althen.nl)

France  
[info@althensensors.fr](mailto:info@althensensors.fr)

Sweden  
[info@althensensors.se](mailto:info@althensensors.se)

USA/Canada  
[info@althensensors.com](mailto:info@althensensors.com)

Other countries  
[info@althensensors.com](mailto:info@althensensors.com)