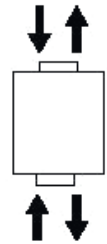


## N

## AUMI

### Miniature Compression and Tension Load Cell

- Measurement ranges from 0 ... 100 g to 0 ... 2 t
- Compression / tension
- Non-linearity 0.03 % R.O
- Output signal 2 mV/V  $\pm 1$  % (up to 5 kg: 1 mV/V)
- Supply voltage 10 VDC

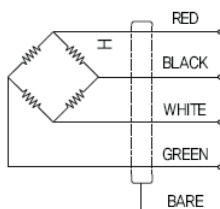


These load cells AUMI measure both tension and compression load from 100 gf to 2 tf. High accuracy, high output voltage and tight tolerances provide excellent reliability. Applications include performance testers for automotive industry.

### SPECIFICATIONS

|                                |   |
|--------------------------------|---|
| Rated capacity (R.C.):         | 100 g / 200 g / 500 g / 1 kg / 2 kg / 5 kg / 10 kg / 20 kg / 50 kg / 100 kg / 200 kg / 500 kg / 1 t / 2 t |
| Rated output (R.O.):           | 2 mV/V $\pm 1$ % (100 g to 5 kg = 1 mV/V)   |
| Non-linearity                  | 0.03 % R.O.   |
| Hysteresis:                    | 0.03 % R.O.   |
| Non-repeatability:             | 0.03 % R.O.   |
| Zero balance:                  | $\pm 2$ % R.O.  |
| Compensated temperature range: | -10 ... 50 °C   |
| Safe temperature range:        | -20 ... 80 °C   |
| Temp. effect on rated output:  | 0.1 % load/10 K   |
| Temp. effect on zero balance:  | 0.05 % R.O./10 K  |
| Terminal resistance:           | 350 $\Omega$ $\pm 1$ %  |
| Insulation resistance, bridge: | 2000 M $\Omega$   |
| Excitation voltage:            | 10 V (100 g to 5 kg = 5 V)  |
| Electrical connection:         | $\varnothing 5 \pm 0.5$ mm, 3 m, 4 core   |
| Safe overload:                 | 120 % R.C.  |

### ANSCHLUSSBELEGUNG



Red: + Excitation

Black: + Signal

White: - Excitation

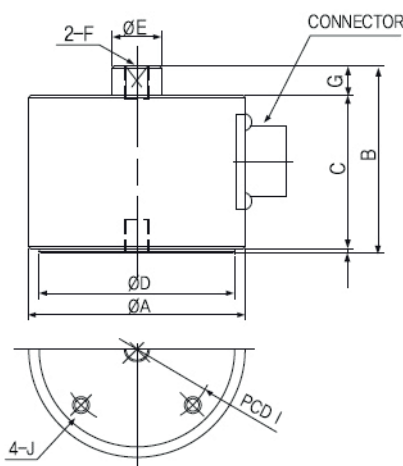
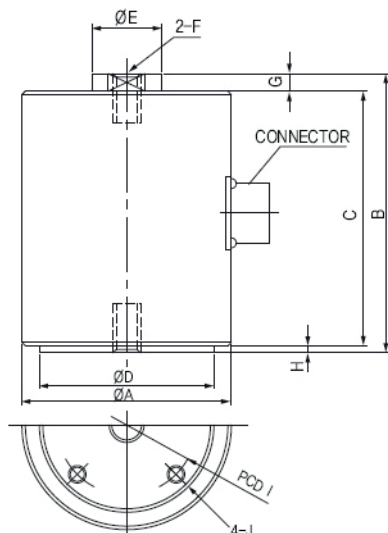
Green: - Signal

Bare: Shield

## DIMENSIONS

Models 10 kg to 2 t

Models 100 g to 5 kg



Dimensions in „mm“, approx. values

These drawings are for information only and not intended for construction purpose.  
Please contact us for detailed drawings.

| Model     | Capacity | ØA | B   | C   | ØD | ØE   | F             | G | H | I  | J         | Weight |
|-----------|----------|----|-----|-----|----|------|---------------|---|---|----|-----------|--------|
| AUMI-G100 | 100 g    | 52 | 45  | 37  | 47 | 10.5 | M4×0.7 DP8    | 7 | 1 | 38 | 4-M4 DP6  | 0.5 kg |
| AUMI-G200 | 200 g    | 52 | 45  | 37  | 47 | 10.5 | M4×0.7 DP8    | 7 | 1 | 38 | 4-M4 DP6  | 0.5 kg |
| AUMI-G500 | 500 g    | 52 | 45  | 37  | 47 | 10.5 | M4×0.7 DP8    | 7 | 1 | 38 | 4-M4 DP6  | 0.5 kg |
| AUMI-K001 | 1 kg     | 52 | 45  | 37  | 47 | 10.5 | M6×1.0 DP8    | 7 | 1 | 38 | 4-M4 DP6  | 0.5 kg |
| AUMI-K002 | 2 kg     | 52 | 45  | 37  | 47 | 12   | M6×1.0 DP8    | 7 | 1 | 38 | 4-M4 DP6  | 0.5 kg |
| AUMI-K005 | 5 kg     | 52 | 45  | 37  | 47 | 12   | M6×1.0 DP8    | 7 | 1 | 38 | 4-M4 DP6  | 0.5 kg |
| AUMI-K010 | 10 kg    | 60 | 80  | 73  | 50 | 20   | M12×1.75 DP15 | 5 | 2 | 40 | 4-M5 DP10 | 1 kg   |
| AUMI-K020 | 20 kg    | 60 | 80  | 73  | 50 | 20   | M12×1.75 DP15 | 5 | 2 | 40 | 4-M5 DP10 | 1 kg   |
| AUMI-K050 | 50 kg    | 60 | 80  | 73  | 50 | 20   | M12×1.75 DP15 | 5 | 2 | 40 | 4-M5 DP10 | 1 kg   |
| AUMI-K100 | 100 kg   | 60 | 80  | 73  | 50 | 20   | M12×1.75 DP15 | 5 | 2 | 40 | 4-M5 DP10 | 1 kg   |
| AUMI-K200 | 200 kg   | 60 | 80  | 73  | 50 | 20   | M12×1.75 DP15 | 5 | 2 | 40 | 4-M5 DP10 | 1 kg   |
| AUMI-K500 | 500 kg   | 60 | 80  | 73  | 50 | 20   | M12×1.75 DP15 | 5 | 2 | 40 | 4-M5 DP10 | 1 kg   |
| AUMI-T001 | 1 t      | 60 | 80  | 73  | 50 | 20   | M12×1.75 DP15 | 5 | 2 | 40 | 4-M5 DP10 | 2 kg   |
| AUMI-T002 | 2 t      | 88 | 110 | 102 | 80 | 36   | M18×1.5 DP22  | 5 | 3 | 55 | 4-M6 DP12 | 3 kg   |

## ORDERING INFORMATION

AUMI-xxxx

### Rated Capacity xxxx

|      |   |        |      |   |        |      |   |     |
|------|---|--------|------|---|--------|------|---|-----|
| G100 | = | 100 g  | K001 | = | 1 kg   | T001 | = | 1 t |
| G200 | = | 200 kg | K002 | = | 2 kg   | T002 | = | 2 t |
| G500 | = | 500 kg | K005 | = | 5 kg   |      |   |     |
|      |   |        | K010 | = | 10 kg  |      |   |     |
|      |   |        | K050 | = | 50 kg  |      |   |     |
|      |   |        | K100 | = | 100 kg |      |   |     |
|      |   |        | K200 | = | 200 kg |      |   |     |
|      |   |        | K500 | = | 500 kg |      |   |     |

Due to continuous product development, ALTHEN and partners reserve the right to vary the foregoing details without prior notice.

Page 2 / 2

The information provided herein is to the best of our knowledge true and accurate, it is provided for guidance only. All specifications are subject to change without prior notification.

Althen – Your expert partner in Sensors & Controls | [althensensors.com](http://althensensors.com)

Althen stands for pioneering measurement and custom sensor solutions. In addition we offer services such as calibration, design &amp; engineering, training and renting of measurement equipment.

Germany / Austria / Switzerland  
info@althen.de

Benelux  
sales@althen.nl

France  
info@althensensors.fr

Sweden  
info@althensensors.se

USA / Canada  
info@althensensors.com

Other countries  
info@althensensors.com