

N

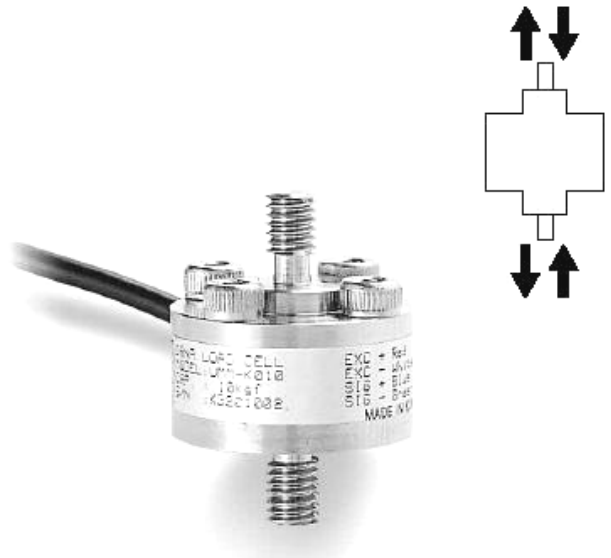
AUMM | AUMMA

MINIATURE TENSION LOAD CELL

- Measurement ranges from 0 ... 1 kg to 0 ... 200 kg
- Compression / tension
- Non-linearity 0.1 % R.O
- Output signal 0.7 ... 1.2 V/V
- Supply voltage 5 VDC

MORE FEATURES

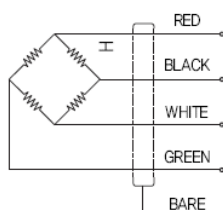
- Extremely small and lightweight
- Protection class IP67



SPECIFICATIONS

Model	AUMMA, AUMM
Rated capacity (R.C.):	1 kg / 2 kg / 5 kg / 10 kg / 20 kg / 50 kg / 100 kg / 200 kg
Rated output (R.O.):	0.7 ... 1.2 mV/V
Non-linearity:	0.1 % R.O.
Hysteresis:	0.1 % R.O.
Non-repeatability:	0.1 % R.O.
Zero balance:	±2 % R.O.
Compensated temperature range:	-10 ... +70 °C
Safe temperature range:	-10 ... +80 °C
Temp. effect on rated output:	0.1 % load/10 K
Temp. effect on zero balance:	0.05 % R.O./10 K
Terminal resistance, input:	350 ±30 Ω
Terminal resistance, output:	350 ±20 Ω
Insulation resistance, bridge/case:	2000 MΩ
Excitation voltage:	5 VDC
Electrical connection:	Ø3 mm, 4 core shielded cable, 3 m
Safe overload:	120 % R.C.

WIRING



Red: + Excitation

Black: + Signal

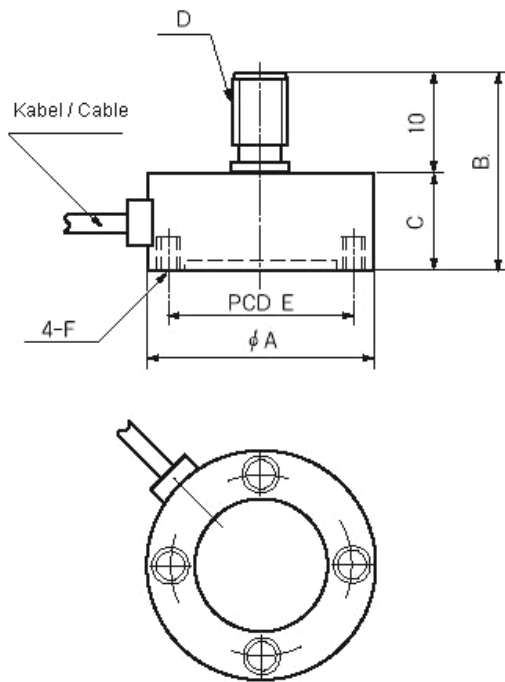
White: - Excitation

Green: - Signal

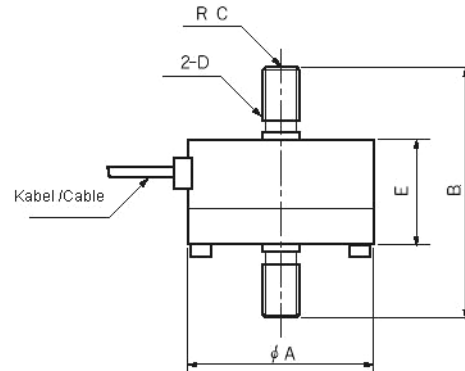
Bare: Shield

DIMENSIONS

AUMMA



AUMM



Dimensions in „mm“, approx. values
These drawings are for information only and not intended for construction purpose.
Please contact us for detailed drawings.

Model	Capacity	AUMMA						AUMM				
		A	B	C	D	E	F	A	B	C	D	E
AUMM(A)-K001	1 kg (9.8 N)	23	20	10	M3x0.5	18	M3DP5	23	34	20	M3x0.5	14
AUMM(A)-K002	2 kg (19.6 N)	23	20	10	M3x0.5	18	M3DP5	23	34	20	M3x0.5	14
AUMM(A)-K005	5 kg (49.0 N)	23	20	10	M3x0.5	18	M3DP5	23	34	20	M3x0.5	14
AUMM(A)-K010	10 kg (98.1 N)	27	21	11	M6x1	22	M3DP5	27	37	30	M6x1	17
AUMM(A)-K020	20 kg (196 N)	27	21	11	M6x1	22	M3DP5	27	37	30	M6x1	17
AUMM(A)-K050	50 kg (490 N)	27	21	11	M6x1	22	M3DP5	27	37	30	M6x1	17
AUMM(A)-K100	100 kg (981 N)	27	21	11	M6x1	22	M3DP5	27	37	30	M6x1	17
AUMM(A)-K200	200 kg (1.96 kN)	27	21	11	M6x1	22	M3DP5	27	37	30	M6x1	17

Ordering Information

AUMM-xxxx, AUMMA-xxxx

Rated Capacity xxxx

K001	=	1 kg
K002	=	2 kg
K005	=	5 kg
K010	=	10 kg
K020	=	20 kg
K050	=	50 kg
K100	=	100 kg
K200	=	200 kg

Due to continuous product development, ALTHEN and partners reserve the right to vary the foregoing details without prior noti