

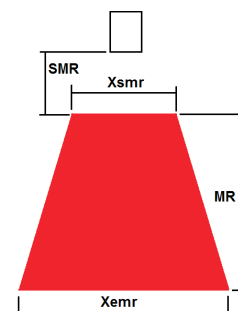


### Options

- Cooling plate with air-knife and air/water cooling
- Customized versions with non-standard base, range and housing shape
- Special version for use in vacuum conditions
- Special flexible cable for robotic applications



FDRF627-	MR (mm)	SMR (mm)	EMR (mm)	Xsmr (mm)	Xemr (mm)	Size (mm)	Weight (g)		
25/10-8/11	10	25	10	8	11	Fig. 1	0,37		
65/25-20/22	25	65	90	20	22	Fig. 2	0,6		
75/50-30/41	50	75	125	30	41				
70/100-48/82	100	70	170	48	82				
70/150-58/122	150	70	220	58	122				
95/150-53/106	150	95	245	53	106				
82/200-60/150	200	82	282	60	150				
90/250-65/180	250	90	340	65	180	Fig. 3			
180/250-170/278	250	180	430	170	278			L=326	2
190/300-160/300	300	190	490	160	300			L=283	1,9
220/300-203/330	300	220	520	203	330			L=374	2,1
260/400-210/400	400	260	660	210	400			L=350	2,2
325/500-268/500	500	325	825	268	500			L=415	2,3
400/600-320/600	600	400	1000	320	600			L=490	2,4
475/700-374/700	700	475	1175	374	700			L=558	2,5
545/800-425/800	800	545	1345	425	800			L=627	2,6
615/900-480/900	900	615	1515	480	900			L=696	2,7
690/1000-535/1000	1000	690	1690	535	1000	L=765	2,8		
620/1165-430/1010	1165	620	1785	430	1010	L=554	2,5		
Overall specifications									
Sampling rate, Hz	Full range: 485 or 938 (DS mode), ROI: 5096 or 6800 (DS mode)								
Linearity Z, %FS	0,05 or 0,1 for DS mode								
Linearity X, %FS	0,1								
Resolution Z, %FS	0,01% or 0,02% (DS mode)								
Resolution X	648 or 1296 (programmable value)								
Environment resistance:									
Enclosure rating	IP67								
Vibration	20g/10...1000Hz, 6 hours, for each of XYZ axes								
Shock	30 g/6 ms								
Ambient temperature, °C	0...+40, (-20...+40 for the sensors with in-built heater), (-30...+120 for the sensors with in-built heater and water/air cooling housing)								
Relative humidity	5-95% (no condensation)								
Storage temperature, °C	-20...+70								
Housing/windows material	aluminum/glass								

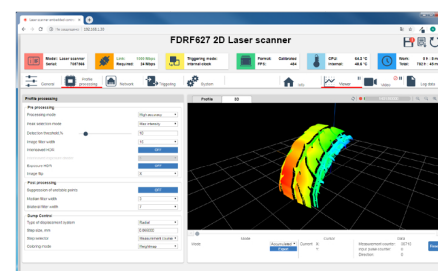
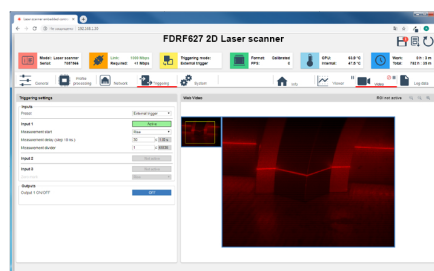
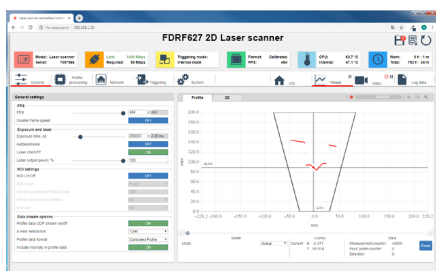


### Software

- Setting sensor parameters
- Data receiving, storage, visualization

### WEB-INTERFACE

for scanners parameterization, image and profile visualization



02.2020 | version 0001

**Laser Scanners - FDRF627 Series**

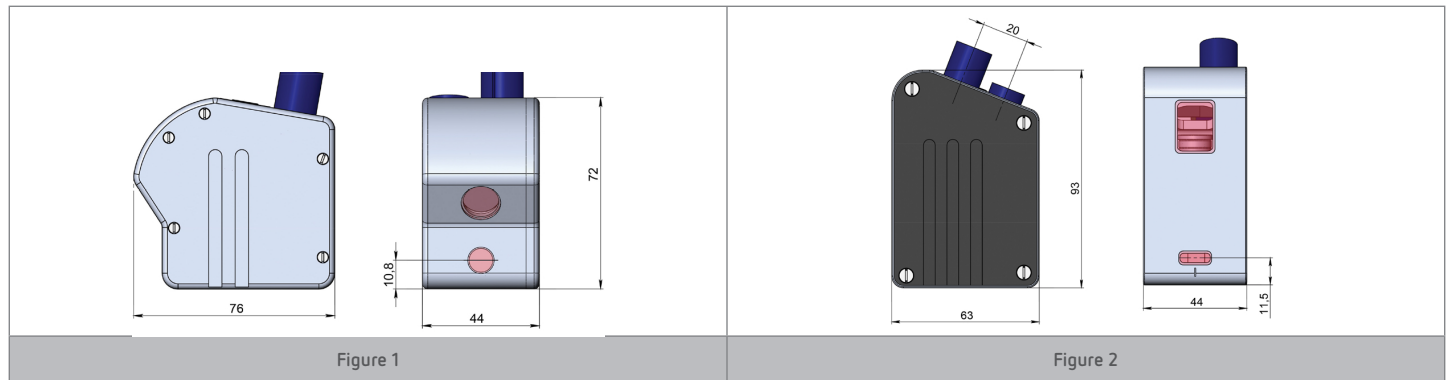


Figure 1

Figure 2

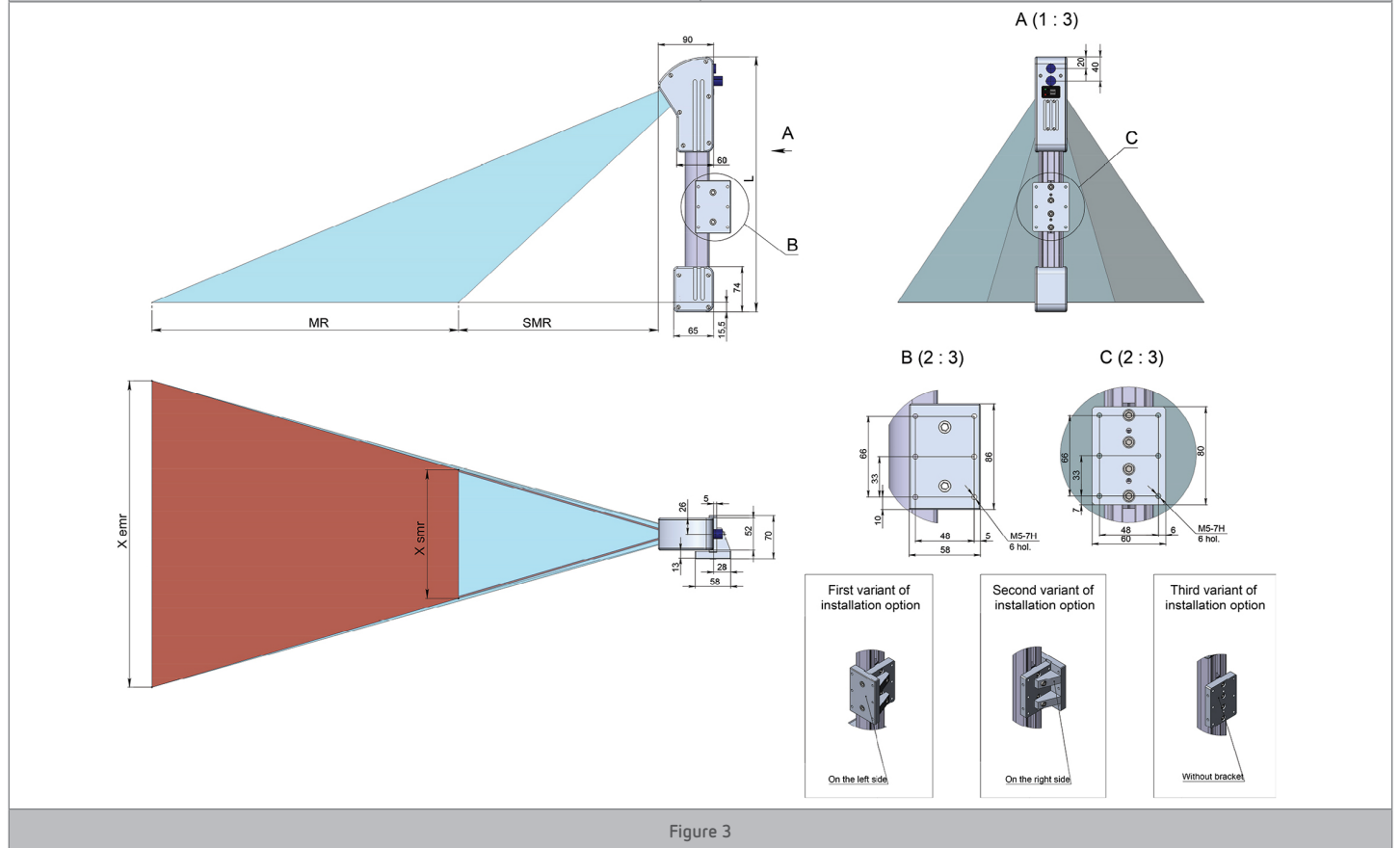
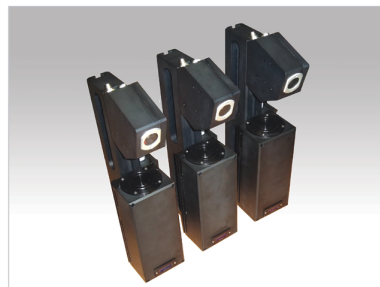


Figure 3

**Specialized Scanners**



Rail profile control scanners with high-power (2W) IR laser



Ore volume control scanners with high-power (2W) IR laser



Internal thread control scanners

The information provided herein is to the best of our knowledge true and accurate, it is provided for guidance only. All specifications are subject to change without prior notification.

Althen – Your expert partner in Sensors & Controls | [althensensors.com](http://althensensors.com)

Althen stands for pioneering measurement and custom sensor solutions. In addition we offer services such as calibration, design & engineering, training and renting of measurement equipment.

Germany/Austria/Switzerland  
[info@althen.de](mailto:info@althen.de)

Benelux  
[sales@althen.nl](mailto:sales@althen.nl)

France  
[info@althensensors.fr](mailto:info@althensensors.fr)

Sweden  
[info@althensensors.se](mailto:info@althensensors.se)

USA/Canada  
[info@althensensors.com](mailto:info@althensensors.com)

Other countries  
[info@althensensors.com](mailto:info@althensensors.com)