



mm

G118

APPLICATION

- Intrinsically safe for Gas to:
Class I, Zone 0 Ex ia / AEx ia
Class 1 Division 1
- Non-contacting inductive technology to eliminate wear
- Travel set to customer's requirement
- Compact 19 mm diameter body,
- High durability and reliability
- High accuracy and stability
- Sealing to IP67



As a leading designer and manufacturer of linear, rotary, tilt and intrinsically safe position sensors, Althen has the expertise to supply a sensor to suit a wide variety of applications. Our intrinsically safe G118 incorporates electronics system EX08 which is CSA approved for use in potentially explosive **gas/vapour** atmospheres. The G118 is designed for a wide range of industrial applications and is ideal for OEMs seeking good sensor performance in situations where a small diameter, short-bodied sensor is required for operation in hazardous areas. The unit is compact and space-efficient, being responsive along almost its entire length, and like all Althen sensors provides a linear output proportional to travel. Each unit is supplied with the output calibrated to the travel required by the customer, from 2 to 50mm and with full EMC protection built in.

Overall performance, repeatability and stability are outstanding over a wide temperature range. The sensor has a compact 19 mm diameter stainless steel body, is easy to install and set up. Mounting options include flange, M5 rod eye bearings and body clamps. The plunger can be supplied free or captive, with a female M4 thread, an M5 rod eye, magnetic tip, or spring-loaded with a dome end. The G118 also offers a range of mechanical options, environmental sealing is to IP67.

SPECIFICATIONS

Dimensions¹		
Body diameter	19 mm	
Body length dependant on options		
Calibrated Travel (Standard)	Axial	Radial
2 mm to 10 mm	72.5 mm	91.5mm
11 mm to 20 mm	82.5 mm	101.5 mm
21 mm to 30 mm	92.5 mm	111.5 mm
31 mm to 50 mm (Flange)	112.5 mm	131.5 mm
2 mm to 10 mm	78 mm	97 mm
11 mm to 20 mm	88 mm	107 mm
21 mm to 30 mm	98 mm	117 mm
31 mm to 50 mm	118 mm	137 mm
Plunger	Ø 6mm	
Independent Linearity	≤ ± 0.25% FSO @ 20°C	
Temperature Coefficients	< ± 0.01%/°C Gain & < ± 0.01%FS/°C Offset	
Frequency Response	> 10 kHz (-3dB)	
Resolution	Infinite	
Noise	< 0.02% FSO	
Intrinsic Safety²	Class I, Zone 0 Ex ia IIC T4 Ga AEx ia IIC T4 Ga Class I, Division 1, Groups A, B, C, D; T4 (Ta = -40°C to +80°C)	

SPECIFICATIONS (CONTINUED)

Sensor Input Parameters (connector option/s) (cable option/s)	Ui: 11.4V, Ii: 0.20A, Pi: 0.51W. Ci: 1.16µF, Li: 50µH Ci: 1.36µF, Li: 860µH with 1km max. cable
Environmental Temperature Limits Operating Storage	-40°C to +80°C -40°C to +125°C
Sealing	IP67
EMC Performance	EN 61000-6-2, EN 61000-6-3
Vibration	IEC 68-2-6: 10 g
Shock	IEC 68-2-29: 40 g
MTBF	350,000 hrs 40°C Gf
Drawing List ³ G118-11	Sensor Outline

¹ For full mechanical details see drawings G118-11
² Approval only applies to the specified ambient temperature range and atmospheric conditions in the range 0.80 to 1.10 Bar, oxygen ≤ 21%
³ 3D models, step or .igs format, available on request

INTRINSICALLY SAFE EQUIPMENT

Intrinsically safe equipment is defined as “equipment which is incapable of releasing sufficient electrical or thermal energy under normal or abnormal conditions to cause ignition of a specific hazardous atmosphere mixture in its most easily ignited concentration.” CSA approved to;

Class I, Zone 0 Ex ia IIC T4 Ga AEx ia IIC T4 Ga
Class I, Division 1, Groups A, B, C, D; T4
(Ta = -40°C to +80°C)

Designates the sensor as belonging to; Class I, Zone 0: can be used in areas with continuous, long or frequent periods of exposure to hazardous gas / vapours.

Protection class ia IIC, denotes intrinsically safe for Zones 0, 1 & 2 and IIA, IIB and IIC explosive gases.

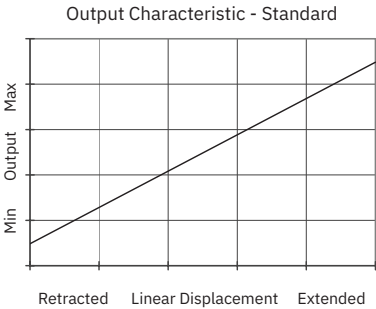
Temperature class T4: maximum sensor surface temperature under fault conditions 135°C.

Ambient temperature range extended to -40°C to +80°C.

It is imperative Althen intrinsically safe sensors be used in conjunction with a galvanic barrier to meet the requirements of the product certification. The Althen G005 Galvanic Isolation Amplifier is purpose made for Althen IS sensors making it the perfect choice. Refer to the G005 datasheet for product specification and output configuration options.

For cable lengths exceeding 10 metres a five wire connection is recommended to eliminate errors introduced by cable resistance and associated temperature coefficients.

CSA approved sensors suitable for dust (H series) applications, are also available from Althen.



	a	b	c	d	e	f	g	h	j
G118	Displacement	A	Connections	Option	Option	Option	Option	Option	Z000

a Displacement		Value
Factory set to any length from 0-2 mm to 0-50 mm (e.g. 0-36 mm)		36
b Output		
Supply V _{dc} (tolerance)	Output	Code
+5V (4.5 - 5.5V)	0.5 - 4.5V (ratiometric with supply)	A
Supply Current: 10mA nominal, 12mA max.		
c Connections		Code
Cable gland radial IP67 M8, metal, 3-core cable		Ixx
Cable gland radial IP67 M8, metal, 5-core cable		IQxx
Connector axial IP67 4 pin M8 IEC 61076-2-104, nylon		J
Connector axial IP67 4 pin M8 IEC 61076-2-104, nylon, pre-wired 3-core cable		Jxx
Connector radial IP67 4 pin M8 IEC 61076-2-104, nylon		K
Connector radial IP67 4 pin M8 IEC 61076-2-104, nylon, pre-wired 3-core cable		Kxx
Cable gland axial IP67 M8, metal, 3-core cable		Lxx
Cable gland axial IP67 M8, metal, 5-core cable		LQxx
Specify required cable length 'xx' in cm. e.g. L2000 specifies axial cable gland with 20 m of cable, 50 cm supplied as standard. Note! maximum length supplied 15000cm. N.b.! M8 connector option with 5-core cable not available.		

d Housing	Code
Standard default	blank
Flange Mount 2 off 3.2 mm x 30 degree wide slots, 25 mm P.C.D.	N
M5 Rod-eye bearing radial version only	S
e Body Fittings	Code
None default	blank
Body Clamps 1 pair	P
f Sprung Plunger	Code
Not sprung default	blank
Spring extend captive plunger only. Note! Supplied loose without option 'T'	R
g Plunger Fittings	Code
Female thread M4x0.7x7 deep default	blank
Dome end with spring extend option 'R'	T
M5 Rod-eye Bearing	U
Magnetic Tip	WA
h Plunger	Code
Captive plunger is retained - default	blank
Non-captive plunger can depart body	V
j Z-code	Code
Calibration to suit X005 required	Z000
≤± 0.1% FSO @20°C Independent Linearity 0 - 10 mm min.	Z650

THREE OR FIVE-WIRE MODE CONNECTION

The aim of this document is to help readers who do not understand what is meant by three or five wire modes of connection between the galvanic isolation amplifier and sensor, and the factors behind them. It is by no means an in-depth technical analysis of the subject.

Whether opting for a pre-wired Althen Intrinsically Safe sensor or one with a connector, choosing the right mode of connection and cable to suit the application requires careful consideration.

Interconnecting cables are not perfect conductors and offer resistance to current flow, the magnitude of resistance[†] depends on conductors resistivity, which changes with temperature, cross sectional area[‡] and length. If the voltage were to be measured at both ends of a length of wire it would be found they are different, this is known as volts drop. Volts drop changes with current flow and can be calculated using Ohm's law, it should be noted that volts drop occurs in both positive and negative conductors. The effects of volts drop can be reduced by increasing the conductors cross sectional area, this does not however eliminate the effects due to temperature variation. There are instances where large cross-section cables are not practical; for example most standard industrial connectors of the type used for sensors have a maximum conductor capacity of 0.75mm², copper prices and ease of installation are other considerations.

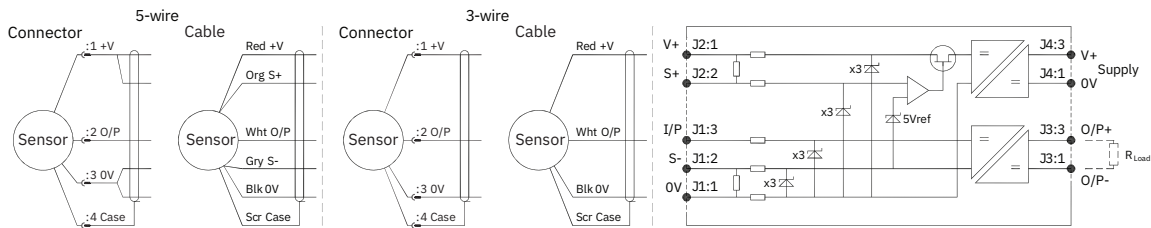
This is important because the effects of volts drop can significantly alter the perceived accuracy of the sensor which is ratiometric i.e. the output signal is directly affected by the voltage across the sensor. Changes in temperature will also be seen as gain variation in the sensor output.

Three wire mode connections are common and are suitable in most cases with short or moderate cable runs. Applications that do not require a high degree of accuracy but have cable runs, say in excess of 10m, volts drop can be reduced by introducing a terminal box close to the sensor and using a larger cross-section cable for a majority of the cable run. Sensors supplied with three core cable are calibrated with the cable fitted which largely eliminates errors due to conductor resistance at room temperature however, as mentioned above, small gain errors due to temperature fluctuations should be expected.

Five wire mode connections have significant benefits as losses in the positive and negative conductors are compensated for by the galvanic isolation amplifier which can ‘sense’ the voltage across the sensor and dynamically adjust the output voltage so that the voltage across the sensor is correct. The effects of cable resistance and associated temperature coefficients are eliminated allowing for smaller conductors than a three wire connection for the same cable run. The amplifier can compensate for up to 15Ω per conductor with a current flow of 15mA, which is more than adequate for 150m of 0.25 mm² cable, longer lengths will require larger conductors.

For this reason Althen recommends five wire connections for cable lengths exceeding 10 metres in 0.25 mm² cable to preserve the full accuracy of the sensor.

See illustrations below for examples of connecting a sensor to the galvanic isolation amplifier.



Cable Length (metres)	Up to 150	150 - 300	300 - 450	450 - 600	600 - 900	900 - 1000
Cross Section (mm²)	0.25	0.5	0.75	1.0	1.5	2.0

The table above shows recommended conductor sizes with respect to cable length for both three and five wire connections, based on copper conductors. Three wire connections will introduce a gain reduction of 5% and a ±1% temperature dependence of gain over the range -40°C to +80°C for the cable temperature. (i.e. about –150 ppm/°C for the maximum lengths shown and less pro rata for shorter lengths.)

It should be noted that the maximum cable length, as specified in the sensor certification, takes **precedence** and **must not** be exceeded.

Althen sensors are supplied with three core 0.25 mm² cable as standard, however five core 0.25 mm² cable can be supplied on request. The galvanic isolation amplifier is available as;

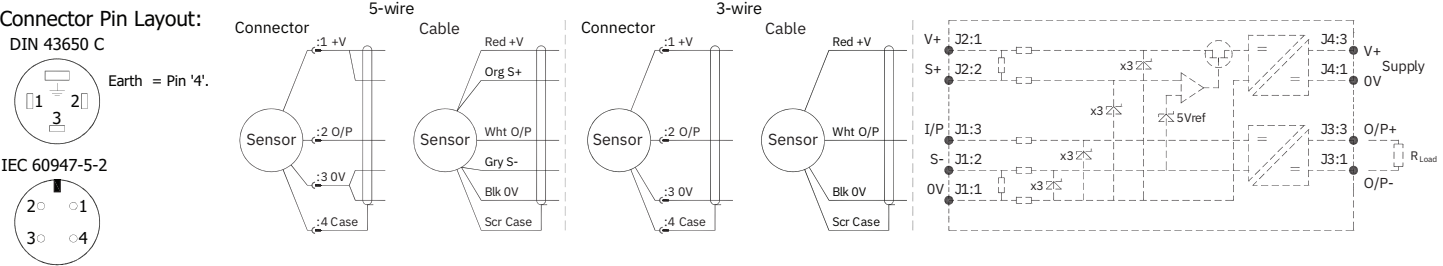
- G005-*** for ‘G’ and ‘H’ prefix sensors
- X005-*** for ‘E’, ‘M’ and ‘X’ prefix sensors

† $R = \rho L / A$ ρ is the resistivity of the conductor (Ωm) L is the length of conductor (m) A is the conductor cross-sectional area (m²).
‡ It is presumed that direct current flow is uniform across the cross-section of the wire, the galvanic isolation amplifier and sensor are a dc system.

INSTALLATION INFORMATION

CSA Qualified Intrinsically Safe Device Certificate number 13.2588225		Ex ia IIC T4 Ga Class I, Zone 0, AEx ia IIC T4 Ga Class I, Division 1, Groups A, B, C, D; T4 (Ta = -40°C to +80°C)	
Electronics Version	Output Description	Supply Voltage: V _s (tolerance)	Load resistance
EX08	0.5 - 4.5V (ratiometric with supply)	+5V (4.5 - 5.5V) 10mA Nom.	5kΩ min

06.2025 | version 0001



PUTTING INTO SERVICE

This sensor must only be installed, operated and maintained by competent and suitably trained personnel. The installation and maintenance must be carried out in accordance with all appropriate international, national and local standard codes of practice and site regulations for intrinsically safe apparatus. The use, installation, or maintenance of the sensor, in any other way than intended, may impair its operation or the protection it provides.

The sensor must be used with a galvanic isolation barrier designed to supply the sensor with a nominal 5V and to transmit the sensor output to a safe area. The barrier parameters must not exceed:-

Ui = 11.4V	Ii = 0.20A	Pi = 0.51W
Ci = 1.36μF*	Li = 860μH*	(with maximum length integral cable)
Ci = 1.16μF	Li = 50μH	(without integral cable)

*Figures for 1km cable where: Ci = 200pF/m & Li = 810nH/m
Cable characteristics must not exceed:-
Capacitance: ≤ 200 pF/m or max. total of: 200 nF
Inductance: ≤ 810 nH/m or max. total of: 810 μH
Approval only applies to specified ambient temperature range and atmospheric conditions in the range: 0.80 to 1.10 Bar, oxygen ≤ 21%.

Markings and safety parameter information for product marked EX06, see annex 1.

ENVIRONMENTAL CONDITIONS

Pollution degree: 2
Installation category: I
Humidity 80% to temperatures up to 31 °C decreasing linearly to 50% rH at 40 °C; /// max 80% rh, non condensing.
The sensor has been assessed for indoor use only. Where used outdoors suitable environmental protection **must** be provided.

SPECIAL CONDITION FOR SAFE USE

The apparatus does not meet the 500 V r.m.s dielectric strength test between circuit and frame, in accordance with clause 6.3.13 of IEC 60079-11:2011. This must be taken into consideration on installation.

Under certain extreme circumstances, the non-metallic and isolated metal parts incorporated in the enclosure of this equipment may generate an ignition-capable level of electrostatic charge. Therefore the equipment shall not be installed in a location where the external conditions are conducive to the build-up of electrostatic charge on such surfaces. This is particularly important if the equipment is installed in a zone 0 location. In addition, the equipment shall only be cleaned with a damp cloth.

Use: The sensor is designed to measure Linear or rotary displacement and provide a proportional analogue output signal.

Assembly and Dismantling:
The unit is not to be serviced or dismantled and re-assembled by the user.

WARNING: Substitution of components may impair intrinsic safety.

AVERTISSEMENT: La substitution de composants peut altérer la sécurité intrinsèque.

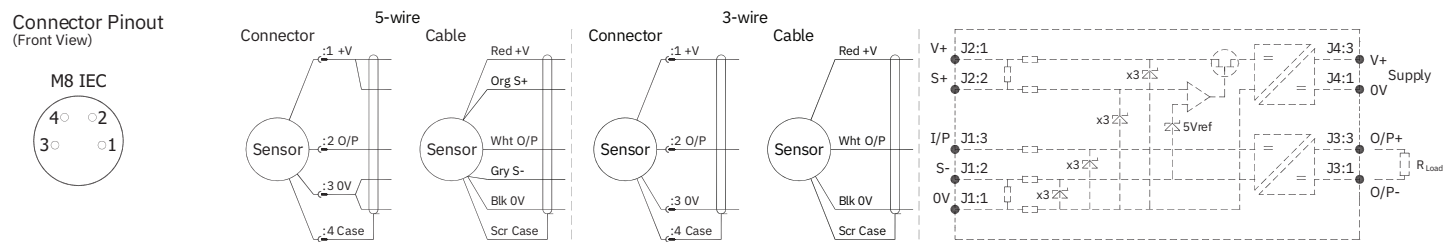
Maintenance: No maintenance is required.

Annex 1 - Markings and Entity Parameters for product with EX06 electronics system.

Ex ia IIC T4 (Ta= -40 to 80°C)
AEx ia IIC T4 (Ta= -40 to 80°C)

Ui = 11.4V	Ii = 0.20A	Pi = 0.51W
Ci = 1.36μF*	Li = 710μH*	(with maximum length integral cable)
Ci = 1.16μF	Li = 50μH	(without integral cable)

*Figures for 1km cable where: Ci = 200pF/m & Li = 660nH/m
Cable characteristics must not exceed:-
Capacitance: ≤ 200 pF/m or max. total of: 200 nF
Inductance: ≤ 660 nH/m or max. total of: 660 μH



N.b. sensors supplied with cable, the free end must be appropriately terminated.

OUTPUT CHARACTERISTIC

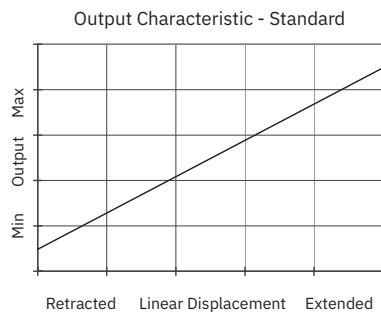
Plunger extended by, at start of normal travel:

Standard: 23 mm* from Ø19 mm face

Flange Mount: 16 mm* from flange face

***Note:** where dome end option is fitted add 5 mm.

The output increases as the plunger extends from the sensor body, the calibrated stroke is between 2 mm and 50 mm.

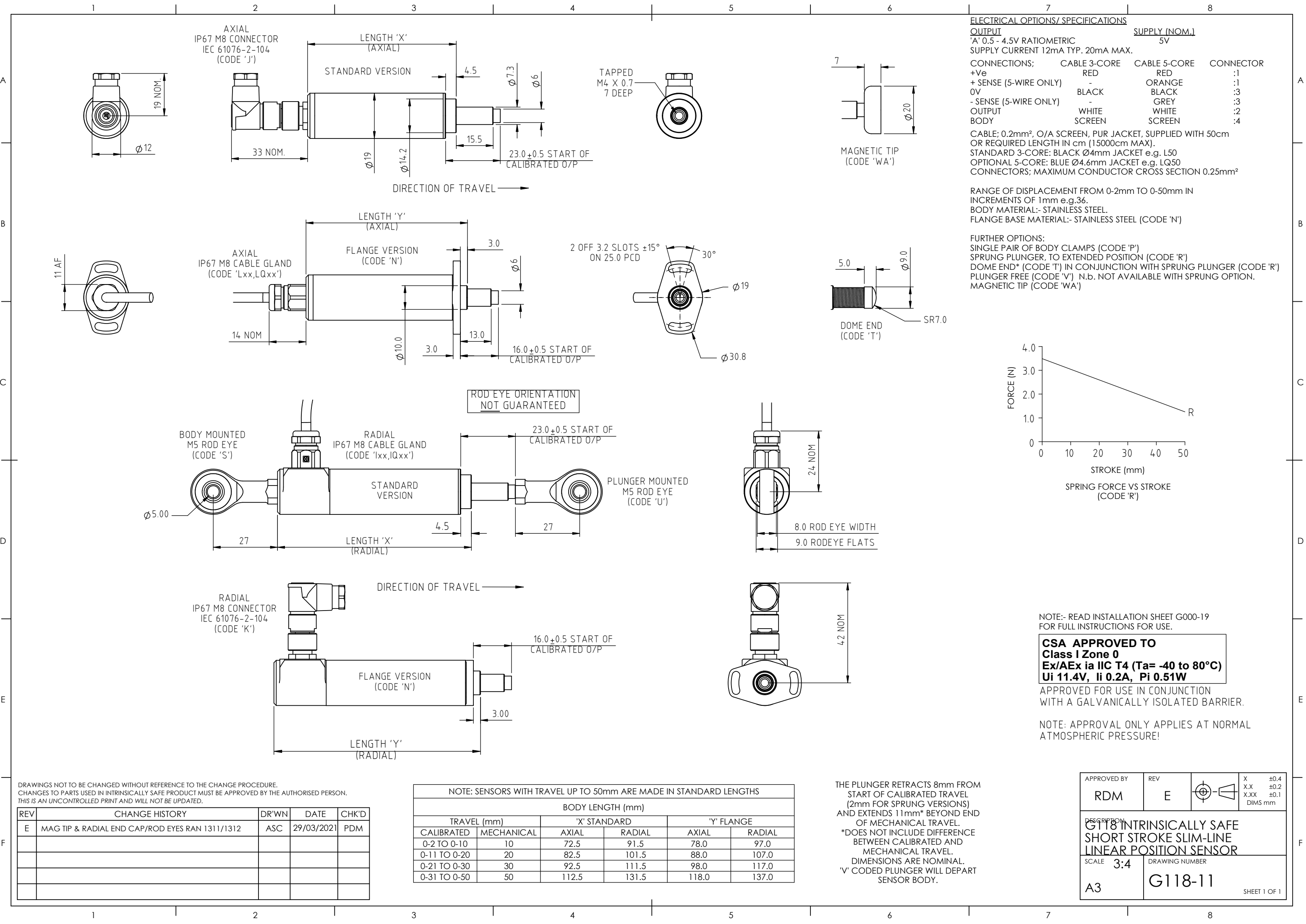


MECHANICAL MOUNTING

Depending on options, body can be mounted by flange, rod eye bearing or clamping the sensor body - body clamps are available, if not already ordered. Plunger mounted by M4x0.7 female thread, rod-eye bearing or magnetic tip - see drawing G118-11.

INCORRECT CONNECTION PROTECTION LEVELS

A	Not protected – the sensor is not protected against either reverse polarity or over-voltage. The risk of damage should be minimal where the supply current is limited to less than 50mA.
---	--

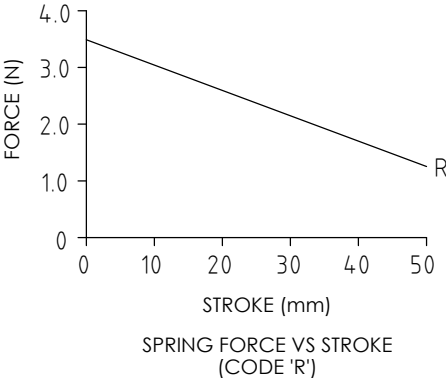


<u>ELECTRICAL OPTIONS/ SPECIFICATIONS</u>			
<u>OUTPUT</u>	<u>SUPPLY (NOM.)</u>		
'A' 0.5 - 4.5V RATIOMETRIC	5V		
SUPPLY CURRENT 12mA TYP. 20mA MAX.			
CONNECTIONS;	CABLE 3-CORE	CABLE 5-CORE	CONNECTOR
+Ve	RED	RED	:1
+ SENSE (5-WIRE ONLY)	-	ORANGE	:1
0V	BLACK	BLACK	:3
- SENSE (5-WIRE ONLY)	-	GREY	:3
OUTPUT	WHITE	WHITE	:2
BODY	SCREEN	SCREEN	:4

CABLE; 0.2mm², O/A SCREEN, PUR JACKET, SUPPLIED WITH 50cm OR REQUIRED LENGTH IN cm (15000cm MAX).
STANDARD 3-CORE: BLACK Ø4mm JACKET e.g. L50
OPTIONAL 5-CORE: BLUE Ø4.6mm JACKET e.g. LQ50
CONNECTORS; MAXIMUM CONDUCTOR CROSS SECTION 0.25mm²

RANGE OF DISPLACEMENT FROM 0-2mm TO 0-50mm IN INCREMENTS OF 1mm e.g.36.
BODY MATERIAL:- STAINLESS STEEL.
FLANGE BASE MATERIAL:- STAINLESS STEEL (CODE 'N')

FURTHER OPTIONS:
SINGLE PAIR OF BODY CLAMPS (CODE 'P')
SPRUNG PLUNGER, TO EXTENDED POSITION (CODE 'R')
DOME END* (CODE 'T') IN CONJUNCTION WITH SPRUNG PLUNGER (CODE 'R')
PLUNGER FREE (CODE 'V') N.b. NOT AVAILABLE WITH SPRUNG OPTION.
MAGNETIC TIP (CODE 'WA')



NOTE:- READ INSTALLATION SHEET G000-19 FOR FULL INSTRUCTIONS FOR USE.

CSA APPROVED TO
Class I Zone 0
Ex/AEx ia IIC T4 (Ta= -40 to 80°C)
Ui 11.4V, Ii 0.2A, Pi 0.51W

APPROVED FOR USE IN CONJUNCTION WITH A GALVANICALLY ISOLATED BARRIER.

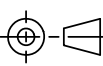
NOTE: APPROVAL ONLY APPLIES AT NORMAL ATMOSPHERIC PRESSURE!

DRAWINGS NOT TO BE CHANGED WITHOUT REFERENCE TO THE CHANGE PROCEDURE.
CHANGES TO PARTS USED IN INTRINSICALLY SAFE PRODUCT MUST BE APPROVED BY THE AUTHORISED PERSON.
THIS IS AN UNCONTROLLED PRINT AND WILL NOT BE UPDATED.

REV	CHANGE HISTORY	DR'WN	DATE	CHK'D
E	MAG TIP & RADIAL END CAP/ROD EYES RAN 1311/1312	ASC	29/03/2021	PDM

NOTE: SENSORS WITH TRAVEL UP TO 50mm ARE MADE IN STANDARD LENGTHS					
BODY LENGTH (mm)					
TRAVEL (mm)		'X' STANDARD		'Y' FLANGE	
CALIBRATED	MECHANICAL	AXIAL	RADIAL	AXIAL	RADIAL
0-2 TO 0-10	10	72.5	91.5	78.0	97.0
0-11 TO 0-20	20	82.5	101.5	88.0	107.0
0-21 TO 0-30	30	92.5	111.5	98.0	117.0
0-31 TO 0-50	50	112.5	131.5	118.0	137.0

THE PLUNGER RETRACTS 8mm FROM START OF CALIBRATED TRAVEL (2mm FOR SPRUNG VERSIONS) AND EXTENDS 11mm* BEYOND END OF MECHANICAL TRAVEL.
*DOES NOT INCLUDE DIFFERENCE BETWEEN CALIBRATED AND MECHANICAL TRAVEL.
DIMENSIONS ARE NOMINAL.
'V' CODED PLUNGER WILL DEPART SENSOR BODY.

APPROVED BY	REV		X	±0.4
RDM	E		X.X	±0.2
			X.XX	±0.1
			DIMs mm	
DESCRIPTION				
G118 INTRINSICALLY SAFE				
SHORT STROKE SLIM-LINE				
LINEAR POSITION SENSOR				
SCALE	3:4	DRAWING NUMBER		
A3		G118-11		
			SHEET 1 OF 1	