



mm **H112**

#### APPLICATION

- Intrinsically safe for Gas and Dust to:  
Class I, Zone 0      Ex ia / AEx ia  
Zone 20      Ex ia / AEx ia  
Class I, Division 1; Class II, Division 1;  
Class III, Division 1
- Gauge head positioning for industrial and scientific applications
- Non-contacting inductive technology to eliminate wear
- Travel set to customer's requirement
- Compact 19 mm diameter body
- Sealing to IP67



As a leading designer and manufacturer of linear, rotary, tilt and intrinsically safe position sensors, Althen has the expertise to supply a sensor to suit a wide variety of applications. Our H112 incorporates electronics system EX08 which is CSA approved for use in potentially explosive **gas/vapour and dust** atmospheres. The H112 is designed for gauge head positioning in industrial and scientific applications and is ideal for OEMs seeking good sensor performance for arduous applications in hazardous areas. The H112, like all Althen sensors, provides a linear output proportional to travel. Each sensor is supplied with the output calibrated to the travel required by the customer, from 5mm to 50mm and with full EMC protection built in.

Overall performance, repeatability and stability are outstanding over a wide temperature range. The sensor is very robust, the body and plunger being made of stainless steel for long service life and environmental resistance. The plunger is spring loaded with a domed end. The H112 is easy to install with a long ½ inch UNF mounting thread and is supplied with two lock nuts for positioning. Environmental sealing is to IP67.

#### SPECIFICATIONS

<b>Dimensions<sup>1</sup></b>	
<b>Body diameter</b>	19 mm
<b>Body Length (excluding thread)</b>	
Axial version	160.7 mm
Radial version	169.5 mm
<b>Mounting Thread Length</b>	59 mm
<b>Plunger extension</b>	calibrated travel + 3.3 mm, OD 7.8 mm
<b>Spring Force</b>	1.5 - 4.5 N approx.
<b>Independent Linearity</b>	≤ ± 0.25% FSO @ 20°C
<b>Temperature Coefficients</b>	< ± 0.01%/°C Gain & < ± 0.01%FS/°C Offset
<b>Frequency Response</b>	> 10 kHz (-3dB)
<b>Resolution</b>	Infinite
<b>Noise</b>	< 0.02% FSO
<b>Intrinsic Safety<sup>2</sup></b>	Class I, Zone 0 Ex ia IIC T4 Ga AEx ia IIC T4 Ga Class I, Zone 20 Ex ia IIIC T135°C Da AEx ia IIIC T135°C Da Class I, Division 1, Groups A, B, C, D; T4 Class II, Division 1, Groups E, F, G, T135°C Class III Division 1; (Ta = -40°C to +80°C)

SPECIFICATIONS (CONTINUED)

Sensor Input Parameters (connector option/s) (cable option/s)	Ui: 11.4V, Ii: 0.20A, Pi: 0.51W. Ci: 1.16µF, Li: 50µH Ci: 1.36µF, Li: 680µH with 1km max. cable
Environmental Temperature Limits Operating Storage	-40°C to +80°C -40°C to +125°C
Sealing	IP67
EMC Performance	EN 61000-6-2, EN 61000-6-3
Vibration	IEC 68-2-6: 10 g
Shock	IEC 68-2-29: 40 g
MTBF	350,000 hrs 40°C Gf
Drawing List <sup>3</sup> H112-11	Sensor Outline
<sup>1</sup> For full mechanical details see drawings G112-11 <sup>2</sup> Approval only applies to the specified ambient temperature range and atmospheric conditions in the range 0.80 to 1.10 Bar, oxygen ≤ 21% <sup>3</sup> 3D models, step or .igs format, available on request	

INTRINSICALLY SAFE EQUIPMENT

Intrinsically safe equipment is defined as “equipment which is incapable of releasing sufficient electrical or thermal energy under normal or abnormal conditions to cause ignition of a specific hazardous atmosphere mixture in its most easily ignited concentration.” CSA approved to;

- Class I, Zone 0 Ex ia IIC T4 Ga AEx ia IIC T4 Ga
- Class I, Zone 20 Ex ia IIIC T135°C Da AEx ia IIIC T135°C Da
- Class I, Division 1, Groups A, B, C, D; T4
- Class II, Division 1, Groups E, F, G, T135°C;
- Class III Division 1;
- (Ta = -40°C to +80°C)

Designates the sensor as belonging to; Class I, Zone 0 / Class I, Zone 20: can be used in areas with continuous, long or frequent periods of exposure to hazardous gas or dust.

**Gas:**  
Protection class ia IIC, denotes intrinsically safe for Zones 0, 1 & 2 and IIA, IIB and IIC explosive gases.  
Temperature class T4: maximum sensor surface temperature under fault conditions 135°C.

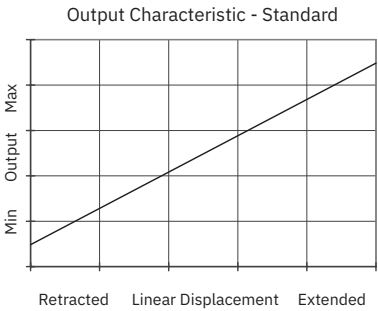
**Dust:**  
Protection class ia IIIC, denotes intrinsically safe for Zones 20 & 21 explosive dust.  
T135°C: maximum sensor surface temperature under fault conditions 135°C.

Ambient temperature range extended to -40°C to +80°C.  
It is imperative Althen intrinsically safe sensors be used in conjunction with a galvanic barrier to meet the requirements of the product certification. The Althen G005 Galvanic Isolation Amplifier is purpose made for Althen IS sensors making it the perfect choice. Refer to the G005 datasheet for product specification and output configuration options.  
For cable lengths exceeding 10 metres a five wire connection is recommended to eliminate errors introduced by cable resistance and associated temperature coefficients.  
CSA approved sensors suitable for gas (G series) applications, are also available from Althen.

Table with 4 columns: a, b, c, d. Row 1: H112, Displacement, A, Connections, Z000

Table with 2 columns: a Displacement, Value. Row 1: Factory set to any length from 0-5 mm to 0-50 mm (e.g. 0-36 mm), 36. Row 2: b Output, Code. Row 3: Supply Vdc (tolerance), Output, Code. Row 4: +5V (4.5 - 5.5V), 0.5 - 4.5V (ratiometric with supply), A. Row 5: Supply Current: 10mA nominal, 12mA max. Row 6: c Connections, Code. Row 7: Cable gland radial IP67 Pg9, metal, 3-core cable, IAxx. Row 8: Cable gland radial IP67 Pg9, metal, 5-core cable, IAQxx. Row 9: Connector axial IP67 4 pin M12 IEC 61076-2-101, metal, J. Row 10: Connector axial IP67 4 pin M12 IEC 61076-2-101, metal, pre-wired 3-core cable, Jxx. Row 11: Connector axial IP67 4 pin M12 IEC 61076-2-101, metal, pre-wired 5-core cable, JQxx. Row 12: Connector radial IP67 4 pin M12 IEC 61076-2-101, metal, K. Row 13: Connector radial IP67 4 pin M12 IEC 61076-2-101, metal, pre-wired 3-core cable, Kxx. Row 14: Connector radial IP67 4 pin M12 IEC 61076-2-101, metal, pre-wired 5-core cable, KQxx. Row 15: Cable gland axial IP67 Pg9, metal, 3-core cable, Lxx. Row 16: Cable gland axial IP67 Pg9, metal, 5-core cable, LQxx. Row 17: Specify required cable length 'xx' in cm. e.g. L2000 specifies axial cable gland with 20 m of cable, 50 cm supplied as standard. Note! maximum length supplied 15000cm.

Table with 2 columns: d Z-code, Code. Row 1: Calibration to suit G005 required, Z000. Row 2: ≤± 0.1% FSO @20°C Independent Linearity 0 - 10 mm min., Z650



THREE OR FIVE-WIRE MODE CONNECTION

The aim of this document is to help readers who do not understand what is meant by three or five wire modes of connection between the galvanic isolation amplifier and sensor, and the factors behind them. It is by no means an in-depth technical analysis of the subject.

Whether opting for a pre-wired Althen Intrinsically Safe sensor or one with a connector, choosing the right mode of connection and cable to suit the application requires careful consideration.

Interconnecting cables are not perfect conductors and offer resistance to current flow, the magnitude of resistance<sup>†</sup> depends on conductors resistivity, which changes with temperature, cross sectional area<sup>‡</sup> and length. If the voltage were to be measured at both ends of a length of wire it would be found they are different, this is known as volts drop. Volts drop changes with current flow and can be calculated using Ohm's law, it should be noted that volts drop occurs in both positive and negative conductors. The effects of volts drop can be reduced by increasing the conductors cross sectional area, this does not however eliminate the effects due to temperature variation. There are instances where large cross-section cables are not practical; for example most standard industrial connectors of the type used for sensors have a maximum conductor capacity of 0.75mm<sup>2</sup>, copper prices and ease of installation are other considerations.

This is important because the effects of volts drop can significantly alter the perceived accuracy of the sensor which is ratiometric i.e. the output signal is directly affected by the voltage across the sensor. Changes in temperature will also be seen as gain variation in the sensor output.

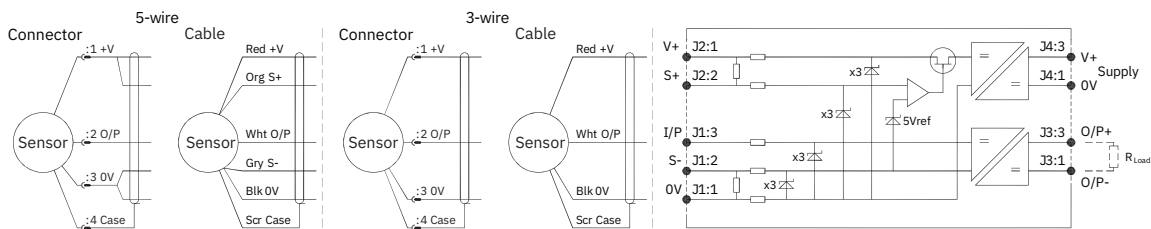
06.2025 | version 0001

**Three wire mode connections** are common and are suitable in most cases with short or moderate cable runs. Applications that do not require a high degree of accuracy but have cable runs, say in excess of 10m, volts drop can reduced by introducing a terminal box close to the sensor and using a larger cross-section cable for a majority of the cable run. Sensors supplied with three core cable are calibrated with the cable fitted which largely eliminates errors due to conductor resistance at room temperature however, as mentioned above, small gain errors due to temperature fluctuations should be expected.

**Five wire mode connections** have significant benefits as losses in the positive and negative conductors are compensated for by the galvanic isolation amplifier which can ‘sense’ the voltage across the sensor and dynamically adjust the output voltage so that the voltage across the sensor is correct. The effects of cable resistance and associated temperature coefficients are eliminated allowing for smaller conductors than a three wire connection for the same cable run. The amplifier can compensate for up to 15Ω per conductor with a current flow of 15mA, which is more than adequate for 150m of 0.25 mm² cable, longer lengths will require larger conductors.

**For this reason Althen recommends five wire connections for cable lengths exceeding 10 metres in 0.25 mm² cable to preserve the full accuracy of the sensor.**

See illustrations below for examples of connecting a sensor to the galvanic isolation amplifier.



Cable Length (metres)	Up to 150	150 - 300	300 - 450	450 - 600	600 - 900	900 - 1000
Cross Section (mm²)	0.25	0.5	0.75	1.0	1.5	2.0

The table above shows recommended conductor sizes with respect to cable length for both three and five wire connections, based on copper conductors. Three wire connections will introduce a gain reduction of 5% and a ±1% temperature dependence of gain over the range -40°C to +80°C for the cable temperature. (i.e. about -150 ppm/°C for the maximum lengths shown and less pro rata for shorter lengths.)

It should be noted that the maximum cable length, as specified in the sensor certification, takes **precedence** and **must not** be exceeded.

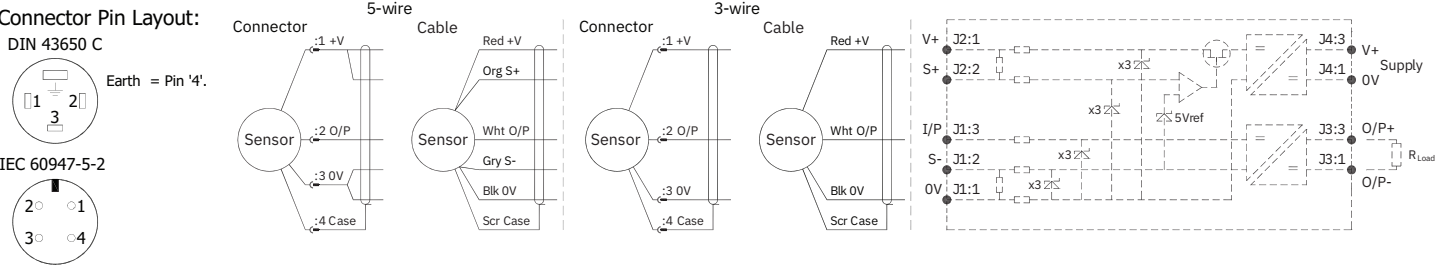
Althen sensors are supplied with three core 0.25 mm² cable as standard, however five core 0.25 mm² cable can be supplied on request. The galvanic isolation amplifier is available as;

- G005-\*\*\* for ‘G’ and ‘H’ prefix sensors
- X005-\*\*\* for ‘E’, ‘M’ and ‘X’ prefix sensors

<sup>†</sup>  $R = \rho L / A$   $\rho$  is the resistivity of the conductor (Ωm) L is the length of conductor (m) A is the conductor cross-sectional area (m²).  
<sup>‡</sup> It is presumed that direct current flow is uniform across the cross-section of the wire, the galvanic isolation amplifier and sensor are a dc system.

INSTALLATION INFORMATION

CSA Qualified Intrinsically Safe Device Certificate number 13.2588225		Ex ia IIC T4 Ga Class I, Zone 0, AEx ia IIC T4 Ga Class I, Division 1, Groups A, B, C, D; T4 Ex ia IIIC T135°C Da Zone 20, AEx ia T135°C Da; Class II, Division 1, Groups E, F, G, T135°C; Class III Division 1; (Ta = -40°C to +80°C)	
Electronics Version	Output Description	Supply Voltage: V <sub>s</sub> (tolerance)	Load resistance
EX08	0.5 - 4.5V (ratiometric with supply)	+5V (4.5 - 5.5V) 10mA Nom.	5kΩ min



PUTTING INTO SERVICE

This sensor must only be installed, operated and maintained by competent and suitably trained personnel. The installation and maintenance must be carried out in accordance with all appropriate international, national and local standard codes of practice and site regulations for intrinsically safe apparatus. The use, installation, or maintenance of the sensor, in any other way than intended, may impair its operation or the protection it provides.

The sensor must be used with a galvanic isolation barrier designed to supply the sensor with a nominal 5V and to transmit the sensor output to a safe area. The barrier parameters must not exceed:-

U <sub>i</sub> = 11.4V	I <sub>i</sub> = 0.20A	P <sub>i</sub> = 0.51W
C <sub>i</sub> = 1.36μF*	L <sub>i</sub> = 860μH*	(with maximum length integral cable)
C <sub>i</sub> = 1.16μF	L <sub>i</sub> = 50μH	(without integral cable)

\*Figures for 1km cable where: C<sub>i</sub> = 200pF/m & L<sub>i</sub> = 810nH/m

Cable characteristics must not exceed:-

Capacitance: ≤ 200 pF/m or max. total of: 200 nF

Inductance: ≤ 810 nH/m or max. total of: 810 μH

Approval only applies to specified ambient temperature range and atmospheric conditions in the range: 0.80 to 1.10 Bar, oxygen ≤ 21%.

Markings and safety parameter information for product marked EX06, see annex 1.

SPECIAL CONDITION FOR SAFE USE

The apparatus does not meet the 500 V r.m.s dielectric strength test between circuit and frame, in accordance with clause 6.3.13 of IEC 60079-11:2011. This must be taken into consideration on installation.

When using a Sensor that has an integral cable in a dust application, the free end of the cable shall be appropriately terminated for the zone of use.

Under certain extreme circumstances, the non-metallic and isolated metal parts incorporated in the enclosure of this equipment may generate an ignition-capable level of electrostatic charge. Therefore the equipment shall not be installed in a location where the external conditions are conducive to the build-up of electrostatic charge on such surfaces. This is particularly important if the equipment is installed in a zone 0 location. In addition, the equipment shall only be cleaned with a damp cloth.

**Use:** The sensor is designed to measure Linear or rotary displacement and provide a proportional analogue output signal.

Assembly and Dismantling:

The unit is not to be serviced or dismantled and re-assembled by the user.

**WARNING:** Substitution of components may impair intrinsic safety.

**AVERTISSEMENT:** La substitution de composants peut altérer la sécurité intrinsèque.

Maintenance:

Accumulated dust layer must not exceed a depth of 200mm.

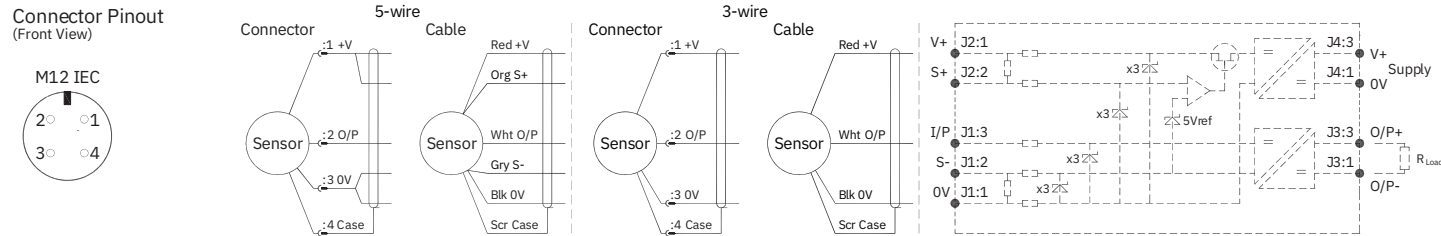
ENVIRONMENTAL CONDITIONS

Pollution degree: 2
Installation category: I
Humidity 80% to temperatures up to 31 °C decreasing linearly to 50% rH at 40 °C; /// max 80% rh, non condensing.
The sensor has been assessed for indoor use only. Where used outdoors suitable environmental protection must be provided.

Annex 1 - Markings and Entity Parameters for product with EX06 electronics system.
Class I, Zone 0
Ex ia IIC T4 (Ta= -40 to 80°C)
AEx ia IIC T4 (Ta= -40 to 80°C)
AEx iaD IIIC T93°C (Ta= -40 to 80°C)

Table with 3 columns: Ui = 11.4V, Ii = 0.20A, Pi = 0.51W; Ci = 1.36µF\*, Li = 710µH\* (with maximum length integral cable); Ci = 1.16µF, Li = 50µH (without integral cable)

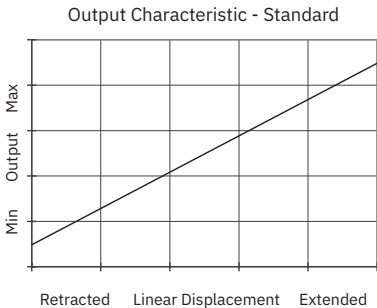
\*Figures for 1km cable where: Ci = 200pF/m & Li = 660nH/m
Cable characteristics must not exceed:-
Capacitance: ≤ 200 pF/m or max. total of: 200 nF
Inductance: ≤ 660 nH/m or max. total of: 660 µH



N.b. sensors supplied with cable, the free end must be appropriately terminated.
Warning - The M12 IEC connector may be rotated for purposes of convenient orientation of the connector and cable, however rotating the connector more than one complete revolution is not recommended. Repeated rotation of the connector will damage the internal wiring!

OUTPUT CHARACTERISTIC

Plunger is extended 3.3 mm from end of body at start of normal travel. The output increases as the plunger extends from the sensor body, the calibrated stroke is between 5 mm and 50 mm.

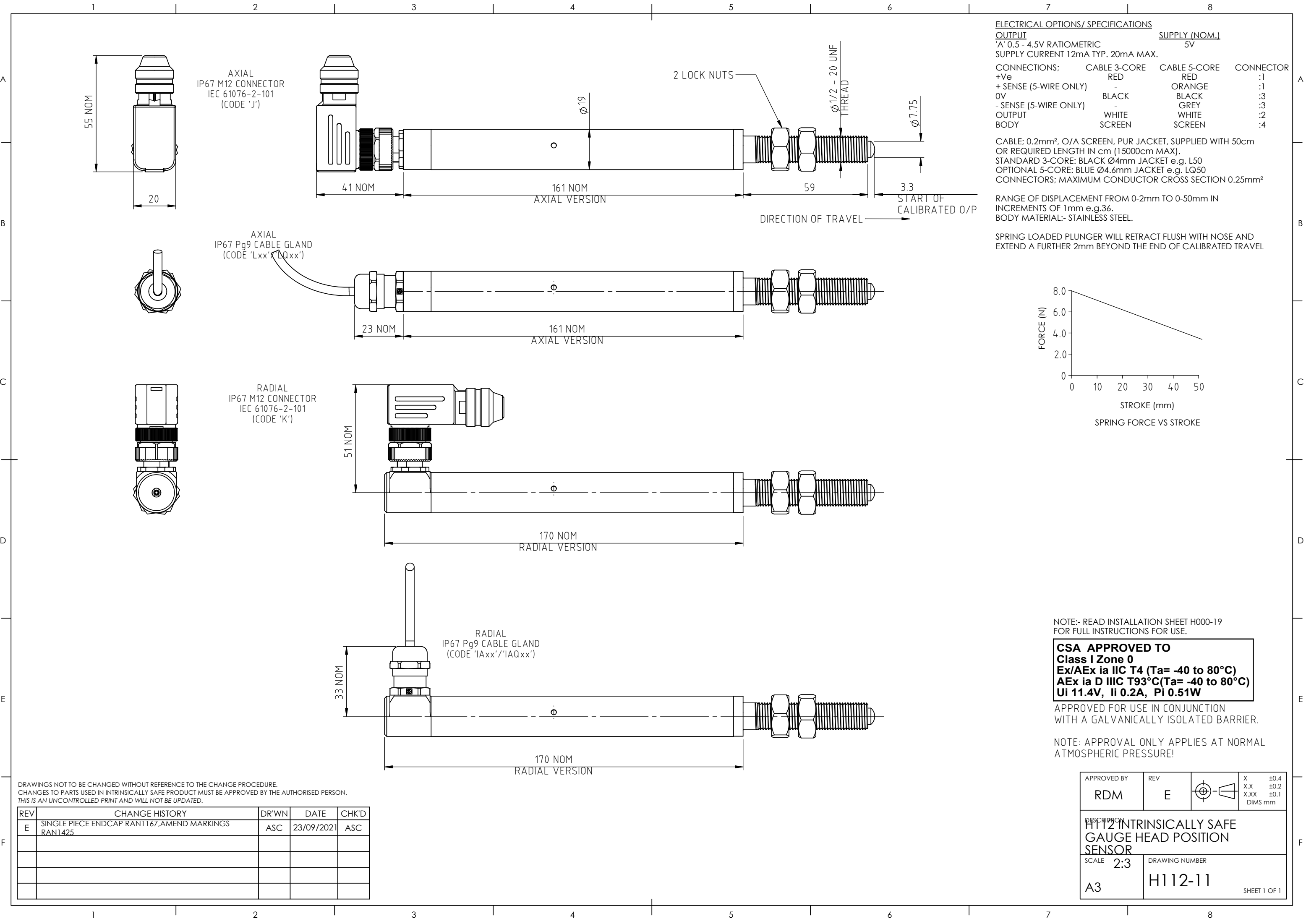


MECHANICAL MOUNTING

Via 1/2"x20 UNF mounting thread, adjust sensor position and lock in place using lock nuts provided. Maximum tightening torque: 10Nm.

INCORRECT CONNECTION PROTECTION LEVELS

Table with 2 columns: A (Not protected) and description: the sensor is not protected against either reverse polarity or over-voltage. The risk of damage should be minimal where the supply current is limited to less than 50mA.

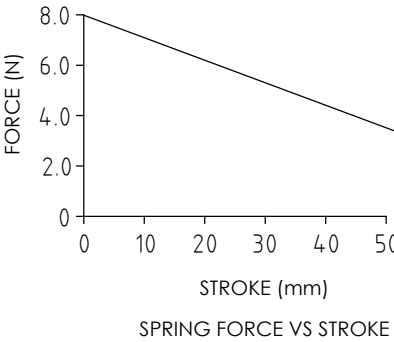


<u>ELECTRICAL OPTIONS/ SPECIFICATIONS</u>			
<u>OUTPUT</u>	<u>SUPPLY (NOM.)</u>		
'A' 0.5 - 4.5V RATIO METRIC	5V		
SUPPLY CURRENT 12mA TYP. 20mA MAX.			
CONNECTIONS;	CABLE 3-CORE	CABLE 5-CORE	CONNECTOR
+Ve	RED	RED	:1
+ SENSE (5-WIRE ONLY)	-	ORANGE	:1
0V	BLACK	BLACK	:3
- SENSE (5-WIRE ONLY)	-	GREY	:3
OUTPUT	WHITE	WHITE	:2
BODY	SCREEN	SCREEN	:4

CABLE; 0.2mm², O/A SCREEN, PUR JACKET, SUPPLIED WITH 50cm OR REQUIRED LENGTH IN cm (15000cm MAX).  
STANDARD 3-CORE: BLACK Ø4mm JACKET e.g. L50  
OPTIONAL 5-CORE: BLUE Ø4.6mm JACKET e.g. LQ50  
CONNECTORS: MAXIMUM CONDUCTOR CROSS SECTION 0.25mm²

RANGE OF DISPLACEMENT FROM 0-2mm TO 0-50mm IN INCREMENTS OF 1mm e.g.36.  
BODY MATERIAL:- STAINLESS STEEL.

SPRING LOADED PLUNGER WILL RETRACT FLUSH WITH NOSE AND EXTEND A FURTHER 2mm BEYOND THE END OF CALIBRATED TRAVEL



NOTE:- READ INSTALLATION SHEET H000-19 FOR FULL INSTRUCTIONS FOR USE.

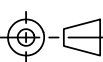
**CSA APPROVED TO**  
**Class I Zone 0**  
**Ex/AEx ia IIC T4 (Ta= -40 to 80°C)**  
**AEx ia D IIC T93°C(Ta= -40 to 80°C)**  
**Ui 11.4V, Ii 0.2A, Pi 0.51W**

APPROVED FOR USE IN CONJUNCTION WITH A GALVANICALLY ISOLATED BARRIER.

NOTE: APPROVAL ONLY APPLIES AT NORMAL ATMOSPHERIC PRESSURE!

DRAWINGS NOT TO BE CHANGED WITHOUT REFERENCE TO THE CHANGE PROCEDURE.  
CHANGES TO PARTS USED IN INTRINSICALLY SAFE PRODUCT MUST BE APPROVED BY THE AUTHORISED PERSON.  
THIS IS AN UNCONTROLLED PRINT AND WILL NOT BE UPDATED.

REV	CHANGE HISTORY	DR'WN	DATE	CHK'D
E	SINGLE PIECE ENDCAP RAN1167,AMEND MARKINGS RAN1425	ASC	23/09/2021	ASC

APPROVED BY	REV		X ±0.4 X.X ±0.2 X.XX ±0.1 DIMs mm
RDM	E		
DESCRIPTION H112 INTRINSICALLY SAFE GAUGE HEAD POSITION SENSOR			
SCALE	2:3	DRAWING NUMBER	
A3		H112-11	
		SHEET 1 OF 1	