



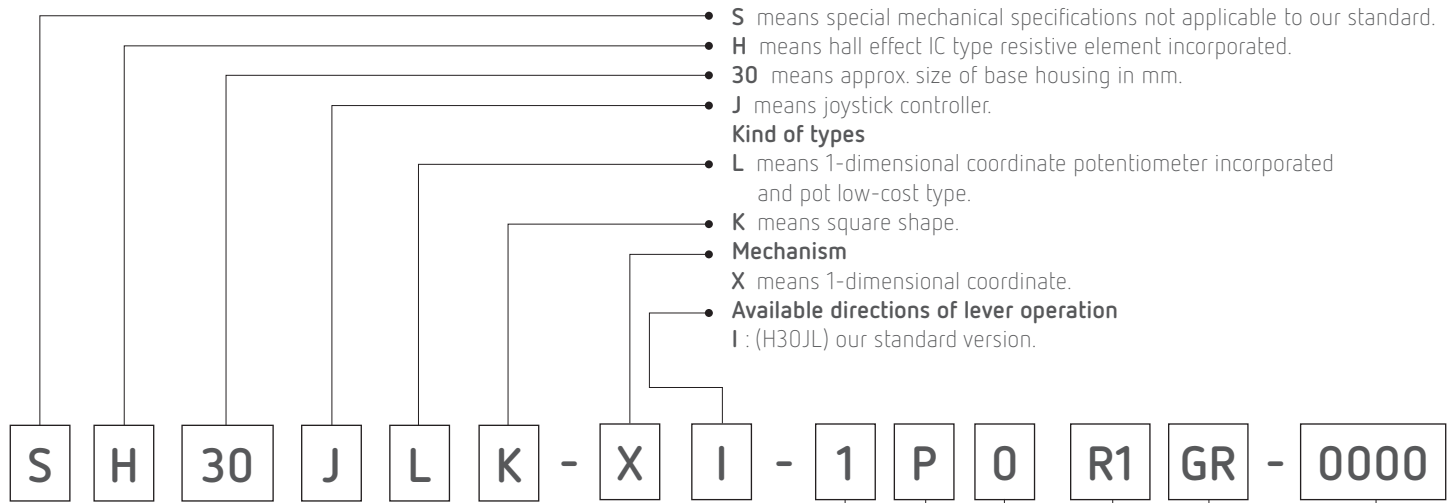
H30JL Single-Axis Finger Joystick

Low-cost 1-axis joystick controller with an incorporated Hall Effect IC type resistive element

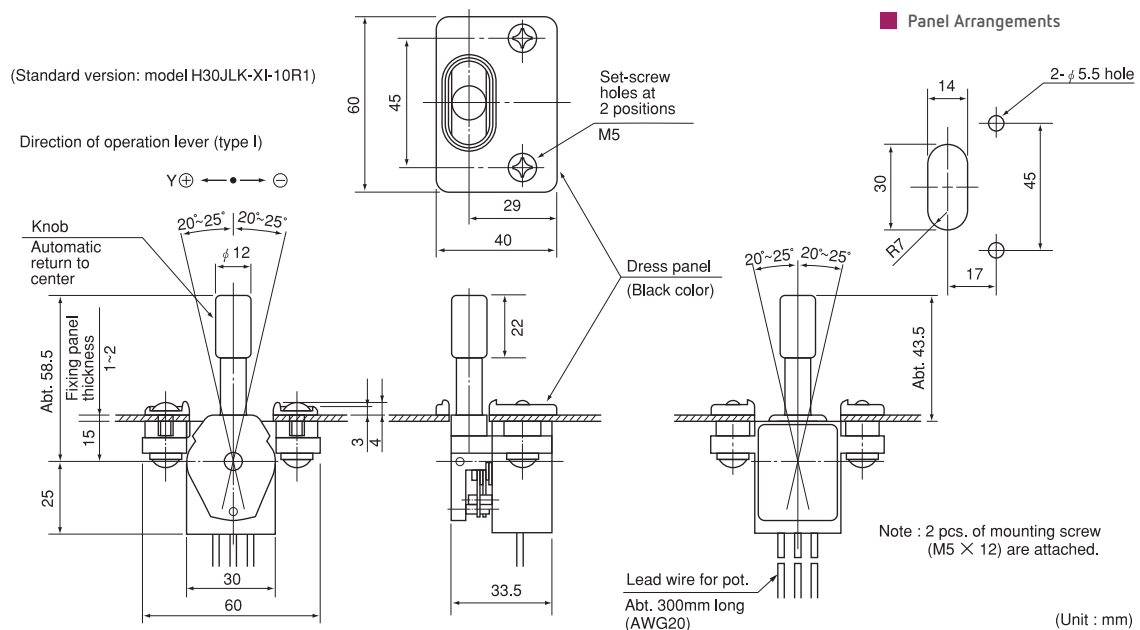
ALTHEN
SENSORS & CONTROLS



Model H30JL



Standard Dimensions



H30JL Single-Axis Finger Joystick

Low-cost 1-axis joystick controller with an incorporated Hall Effect IC type resistive element



H30JLK-XI-10R1
(Standard)



H30JLK-XI-10R1GR
(With round shaped knob,
dust proof rubber cover)



H30JLK-XI-10R1H
(With flat shaped knob)

Standard Specifications

Mechanical Performance

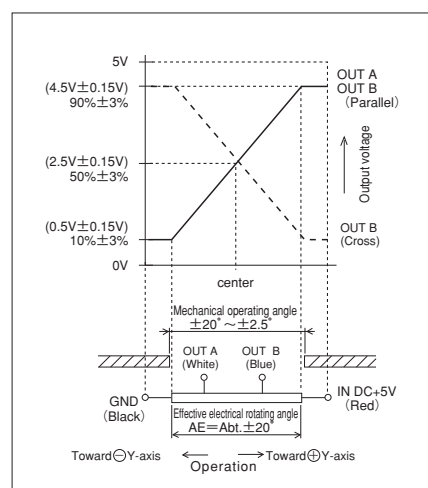
Controlling range of operating lever	1-dimensional coordinate type $\pm 20^\circ \sim \pm 25^\circ$ from center position.
Operating force	Standard spring return device : Automatically return to center Approx. 1~2.5N(100~250gf) (With rubber cover: Approx. 1~5.5N(100~550gf))
Operating temperature range	$-20^\circ\text{C} \sim +60^\circ\text{C}$
Vibration	10Hz~55Hz 98m/s ²
Shock	294m/s ²
Life expectancy	Approx. 5,000,000 operations
Mass	Approx. 100g

Electrical Performance

Hall effect IC type resistive element incorporated

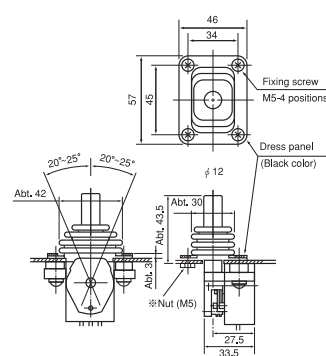
Hall effect IC type resistive element incorporated	<ul style="list-style-type: none"> Applied voltage: 5V$\pm 10\%$ D.C. Effective output: Approx. 0.5V~4.5V Independent linearity tolerance: $\pm 3\%$ Load resistance: over 10KΩ
Dielectric strength	1 minute at 250V.A.C.
Insulation resistance	Over 1000M Ω at 250V.D.C.
EMS durability	50V/m(80MHz~1GHz 1KHz sine-wave 80%AM modulation)

Output Characteristic

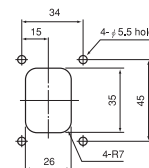


Dimensions of Optional Version

With dust-proof rubber cover



Panel Arrangements for dust-proof rubber cover type



(Unit : mm)

The information provided herein is to the best of our knowledge true and accurate, it is provided for guidance only. All specifications are subject to change without prior notification.

Althen – Your expert partner in Sensors & Controls | althensensors.com

Althen stands for pioneering measurement and custom sensor solutions. In addition we offer services such as calibration, design & engineering, training and renting of measurement equipment.

Germany / Austria / Switzerland
info@althen.de

Benelux
sales@althen.nl

France
info@althensensors.fr

Sweden
info@althensensors.se

USA / Canada
info@althensensors.com

Other countries
info@althensensors.com