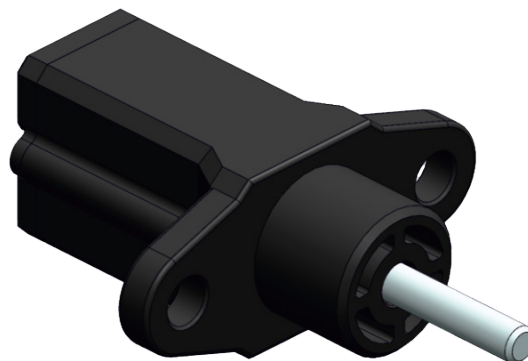


mm LRS
Linear Potentiometer Ultra Slim Body Series

FEATURES

- Measuring range 10 - 25 mm
- Long mechanical life
- Excellent repeatability <0.01 mm
- Infinite resolution
- 2 kOhm: 10 ... 25 mm

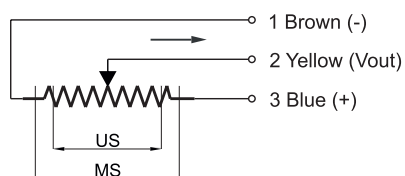
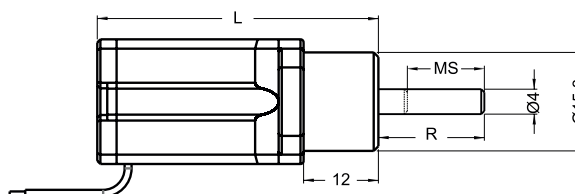
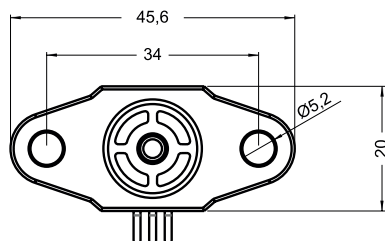


TECHNICAL SPECIFICATIONS

Measurement stroke	10 to 25 mm
Linearity	±%0,5 (<75 mm)
Repeatability	< 0.01 mm
Resolution	Infinite
Resistance	2 kOhm
Resistance tolerance	± %20
Load resistance	100 kOhm min.
Recommended cursor current	<1 µA
Permissible applied voltage	28 VDC max.
Electrical connections	Cable output
Displacement speed	< 5 m/s
Mechanical life	50 million movement
Case dimensions	46x20 mm
Case material	Plastic
Rod material	Stainless steel
Rod diameter	Ø4 mm
Mechanical fixing	Screws
IP degree	IP 65
Operating temperature	-20°C ... +80°C
Storage temperature	-30°C ... +90°C



DIMENSIONS



LRS (mm)	10	25
US (Usefull Stroke)	10	25
MS (Mechanical Stroke)	13	28
R (Rod Length)	17	32
L (Total Length)	45	60

Model	Measurement stroke (mm)	Linearity (%)	Resistance (kOhm)	Connector / Cable
(example) LRS	25	D	2K	0M15
LRS	10 ... 25 mm	D: ±%0,5 (<75 mm)	2K: 2 kOhm	0M15: 0,15 meter cable