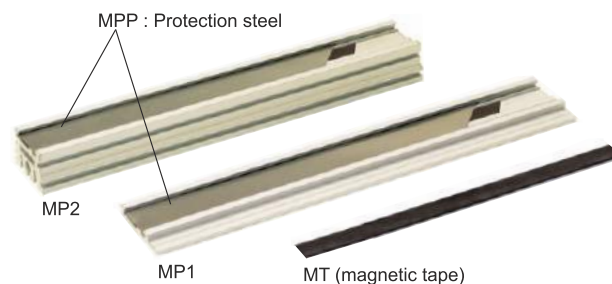




mm MT2, MT5, MP1, MP2

Features

- 5, 2 mm pole pitches
- $\pm 40\mu\text{m}$, accuracy
- Self adhesive magnetic tapes
- Industrial standard dimensions 10 mm x 1,5 mm
- IP 67 protection



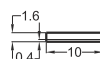
Technical Specifications

| | |
|-------------|-------------------------|
| Pole pitch | 5, 2 mm |
| Accuracy | $\pm 40\mu\text{m}$ |
| Dimensions | 10 mm x 1,5 mm |
| Max. stroke | Up to 50 m single piece |
| Cover strip | Stainless steel |

| | |
|-----------------------|-----------------|
| Mechanical fixing | Self adhesive |
| IP degree | IP 67 |
| Operating temperature | -20°C ... +80°C |
| Storage temperature | -30°C ... +90°C |

| Model | Length |
|---------------|---------------------------------|
| (example) MP1 | 2M |
| MP1 MP2 | 2M: 2 meter (Up to 3 meters) |

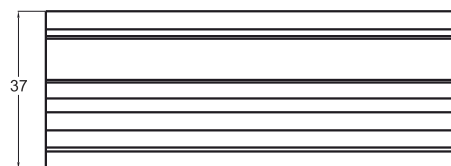
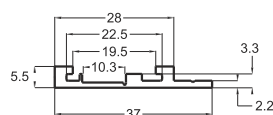
| Model | Pole pitches | Accuracy | Length (meter) |
|-----------------------|--------------------|---|----------------------------------|
| (example) MT | 5 | A40 | 5M |
| MT (magnetic tape) | 2: 2 mm 5: 5 mm | A10 : $\pm 10\mu\text{m}$ A20 : $\pm 20\mu\text{m}$ A40 : $\pm 40\mu\text{m}$ | 5M: 5 meter (Up to 50 meters) |



MT (magnetic tape)

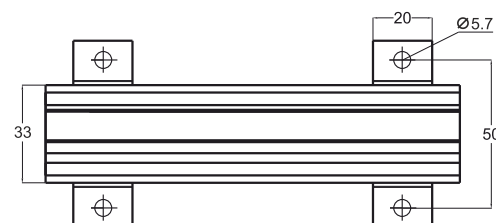
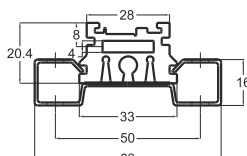
| Pole pitches | A (mm) | B (mm) | L |
|--------------|--------|--------|---|
| MT 2 | 2 | 2 | Up to 25m single piece. Longer stroke on request |
| MT 5 | 5 | 5 | |

| Model | Length |
|---------------------------|----------------------------------|
| (example) MTP | 2M |
| MTP (protection steel) | 2M: 2 meter (Up to 50 meters) |



MP1 Aluminium profile

| Model | Length |
|---------------------------|----------------------------------|
| (example) MPP | 2M |
| MPP (protection steel) | 2M: 2 meter (Up to 50 meters) |



MP2 Aluminium profile