



α PRI40SH

Features

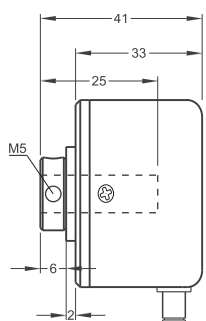
- 40 mm case diameter
- 100 - 200 - 250 - 300 - 360 - 400 - 500, 512 - 600 - 1000 - 1024 - 1250 ppr.
- Push-Pull, TTL Linedriver and HTL Linedriver outputs
- Shaft diameter 6-8 mm
- 3500 rpm max.



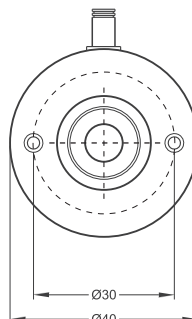
Technical Specifications

Resolution	100 to 1250 ppr.
Output Channels	A, B, Z or A, \bar{A} , B, \bar{B} , Z, \bar{Z}
Output Type	Push-Pull, TTL Linedriver, HTL Linedriver
Supply Voltage	5 VDC, 8-24 VDC or 5-24 VDC
Power Consumption (without load)	< 40 mA (24 VDC)
Cable	1.5m (standard) 5 wire + Shield (Push-Pull) 1.5m (standard) 8 wire + Shield (Linedriver)
Max. Permissible Shaft Loading Radial	80 N

Max. Speed	3500 rpm
Shaft Diameter	Ø 6-8 mm
Shaft Material	Stainless steel
Case Diameter	Ø 40 mm
Case Material	Aluminium and painted steel
IP Degree	IP 54
Operating Temperature	-20°C ... +80°C
Storage Temperature	-30°C ... +90°C



Shaft type / Radial



Push-Pull Cable Output

- +V : Brown
- 0V : White
- GND : Shield
- Ch A : Yellow
- Ch B : Green
- Ch Z : Gray

TTL - HTL Linedriver Cable Output

- +V : Brown
- 0V : White
- GND : Shield
- Ch A : Yellow
- Ch B : Green
- Ch Z : Gray
- Ch A inv.: Blue
- Ch B inv.: Red
- Ch Z inv.: Pink

Model	Case Diameter	Case Type	Shaft Diameter	Output Type	Resolution	Output Channels	Supply Voltage	Connector / Cable	Cable Output
(example) PRI	40	SH	R6	HLD	1250	Z	V2	2M5	R
PRI	40mm	SH: Semi hollow	R6: 6mm R8: 8mm	LTP : Push-Pull LD :TTL Linedriver HLD: HTL Linedriver	100 ... 1250 ppr.	Z :A,B,Z B :A,B ZZ: A,B,Z	V1: 5 VDC V2: 8-24 VDC V3: 5-24 VDC	2M5: 2,5 meter cable 5M : 5 meter cable	R: Radial