



**α** PRI58 SH / PRI58 H

**Features**

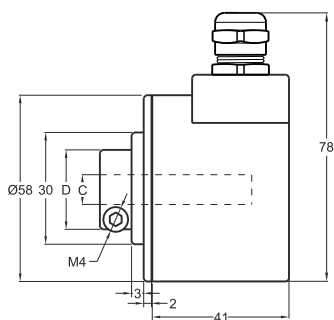
- 58 mm case diameter
- Hollow and semi-hollow shaft
- 100- 200-360-400-500-600-720-1000- 1024  
1800 - 2000 - 2048 - 2500 - 3600 - 4000 - 4096 - 5000 ppr.
- Push-Pull, TTL Linedriver and HTL Linedriver outputs
- Shaft diameter 6- 8-10-12-14-15 mm
- 3500 rpm max.



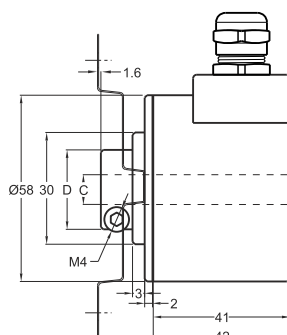
**Technical Specifications**

Resolution	100 to 5000 ppr.
Output Channels	A,B,Z or A $\bar{A}$ , B $\bar{B}$ , Z $\bar{Z}$
Output type	Push-Pull, TTL Linedriver, HTL Linedriver
Supply voltage	5V DC or 8-24V DC or 5-24V DC
Power Consumption	(without load) < 40 r nA (24 VDC)
Cable	2.5m (Standard) 5 Wire+ Shield for Pushpull 2.5m (Standard) 8 Wire + Shield for Linedriver
Max. Permissible Shaft Loading	Radial 60N Axial 40N

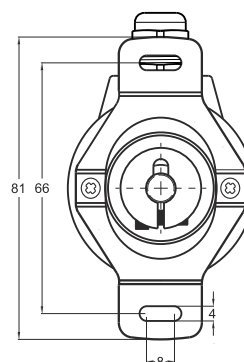
Max. Speed	3.500 rpm
Shaft Diameter	Ø6-8- 10- 12- 14- 15 mm
Shaft Material	Stainless Steel
Case Diameter	Ø58mm
Case Material	Aluminium and Painted Steel
IP degree	IP 54
Operating temperature	-20°C ... +80°C
Storage temperature	-30°C ... +90°C



SH Type (Radial)



H Type (Radial)



PRI 50SH / H	SH (semi hollow) / H (hollow)	
	C	D
	Ø6mm	20mm
	Ø8mm	22mm
	Ø10mm	23,5mm
	Ø12mm	23,5mm
	Ø14mm	29,5mm
	Ø15mm	29,5mm

**Push-Pull Cable Output**

- +V : Brown
- 0V : White
- GND : Shield
- Ch A : Yellow
- Ch B : Green
- Ch Z : Gray

**TTL - HTL Linedriver Cable Output**

- +V : Brown
- 0V : White
- GND : Shield
- Ch A : Yellow
- Ch B : Green
- Ch Z : Gray
- Ch A inv.: Blue
- Ch B inv.: Red
- Ch Z inv.: Pink

Model	Case Diameter	Case Type	Shaft Diameter	Output Type	Resolution	Output Channels	Supply Voltage	Connector / Cable	Cable Output
(example) PRI	58	SH	8	HLD	1024	Z	V2	2M5	R
PRI	58mm	SH : Semi hollow H : Hollow	6 : 6mm 8 : 8mm 10 : 10mm 12 : 12mm 14 : 14mm 15 : 15mm	LTP : Push-pull TTL : TTL Linedriver HLD : HTL Linedriver	100 ... 5000 ppr.	Z : A, B, Z B : A, B	V1 : 5V DC V2 : 8-24V DC V3 : 5-24V DC	2M5 : 2,5 meter cable 5M : 5 meter cable 8M : 8 meter cable 10M : 10 meter cable	R : Radial