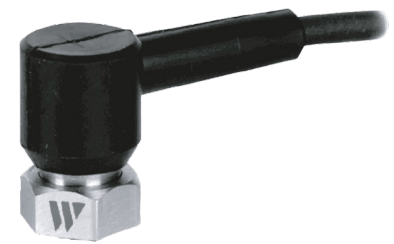




**g** **SM102**  
Side exit integral cable accelerometer

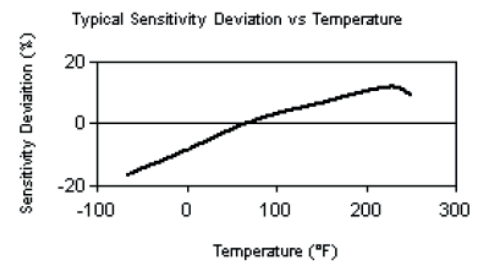


**Key features**

- Low profile
- Pivoting base
- 10 ft molded integral cable

**Connections**

Function	Cable conductor color
power / signal	white
ground	black



Sensitivity, ± 15%	100 mV/g
Acceleration range	50 g
Amplitude nonlinearity	1%
Frequency response, ± 3 dB	0.5 - 10,000 Hz
Resonance frequency	25 kHz
Transverse sensitivity, max	7% of axial
Temperature response	see graph
<b>Power requirement:</b>	
Voltage source	18 - 28 VDC
Current regulating diode	2 - 20 mA
<b>Electrical noise, equiv. g:</b>	
Broadband	1 Hz to 10 kHz 350 µg
Spectral	10 Hz 8 µg/√Hz
	100 Hz 5 µg/√Hz
	1,000 Hz 4 µg/√Hz
Output impedance, max	150 Ω
Bias output voltage	8 to 12 VDC
Grounding	case isolated, internally shielded
Temperature range	-50° to +120°C
Vibration limit	500 g peak
Shock limit	5,000 g peak
Sealing	hermetic
Enclosure rating	IP68
Sensing element design	ceramic, shear
Weight (without cable)	31 grams
Case material	stainless steel
Mounting	1/4-28 stud
Integral cabling <sup>1</sup>	molded connector, side exit, twisted shielded pair cable, polyurethane, 10 ft. standard length

Notes: <sup>1</sup>Other cable lengths may be specified by customer at time of order.

Accessories supplied: mounting base; calibration data (level 2)

