



mm

X117

APPLICATION

- Intrinsically safe for Gas to: Ex II 1G
- Non-contacting inductive technology to eliminate wear
- Travel set to customer's requirement
- Compact 19 mm diameter body
- High accuracy and stability
- Sealing to IP67



As a leading designer and manufacturer of linear, rotary, tilt and intrinsically safe position sensors, Althen has the expertise to supply a sensor to suit a wide variety of applications. Our X117 incorporates electronics system EX07 which is ATEX / IECEx / UKEX approved for use in potentially explosive gas/vapour atmospheres. The X117 is designed for industrial and scientific feedback applications and is ideal for OEMs seeking good sensor performance for arduous applications in hazardous areas.

Overall performance, repeatability and stability are outstanding over a wide temperature range. The unit is very compact and space-efficient with a small 19mm diameter body. The sensor is very robust, the body and push rod being made of stainless steel. The sensor is easy to install with mounting options including M5 male stud and M5 rod eye bearing. The push rod can be supplied free or captive, with male M5 thread, M5 rod eye or magnetic tip. Captive push rods can be sprung loaded in either direction. 1/4" rod eye option available. Like all Althen sensors, the X117 provides a linear output proportional to travel. Each unit is supplied with the output calibrated to the travel required by the customer, from 5 to 350mm and with full EMC protection built in. The X117 offers a range of mechanical options, environmental sealing is to IP67.

SPECIFICATIONS

Dimensions¹	
Body diameter	19 mm
Body Length (Axial version)	calibrated travel + 109.7 mm
sprung < 150mm stroke	calibrated travel + 147.7 mm
sprung ≥ 150mm stroke	calibrated travel + 192.7 mm
(Radial version)	calibrated travel + 118.5 mm
sprung < 150mm stroke	calibrated travel + 156.5 mm
sprung ≥ 150mm stroke	calibrated travel + 201.5 mm
Push rod extension	calibrated travel + 2 mm, OD 9.5 mm
Independent Linearity	≤ ± 0.25% FSO @ 20°C
Temperature Coefficients	< ± 0.01%/°C Gain & < ± 0.01%FS/°C Offset
Frequency Response	> 10 kHz (-3dB)
Resolution	Infinite
Noise	< 0.02% FSO
Intrinsic Safety²	Ex II 1G Ex ia IIC T4 Ga (Ta= -40°C to 80°C)
Sensor Input Parameters (connector option/s) (cable option/s)	Ui: 11.4V, Ii: 0.20A, Pi: 0.51W. Ci: 1.16µF, Li: 50µH Ci: 1.36µF, Li: 860µH with 1km max. cable
Environmental Temperature Limits	
Operating	-40°C to +80°C
Storage	-40°C to +125°C
Sealing	IP67

SPECIFICATIONS (CONTINUED)

EMC Performance	EN 61000-6-2, EN 61000-6-3
Vibration	IEC 68-2-6: 10 g
Shock	IEC 68-2-29: 40 g
MTBF	350,000 hrs 40°C Gf
Drawing List ³ X117-11	Sensor Outline
¹ For full mechanical details see drawings X117-11 ² Approval only applies to the specified ambient temperature range and atmospheric conditions in the range 0.80 to 1.10 Bar, oxygen ≤ 21% ³ 3D models, step or .igs format, available on request	

INTRINSICALLY SAFE EQUIPMENT

Intrinsically safe equipment is defined as “equipment which is incapable of releasing sufficient electrical or thermal energy under normal or abnormal conditions to cause ignition of a specific hazardous atmosphere mixture in its most easily ignited concentration.”
ATEX / IECEx / UKEX approved to;

Ex II 1G
Ex ia IIC T4 Ga (Ta= -40°C to 80°C)

Designates the sensor as belonging to; Group II: suitable for all areas **except mining**, Category 1 G: can be used in areas with continuous, long or frequent periods of exposure to hazardous gas / vapour (Zones 2 to 0).

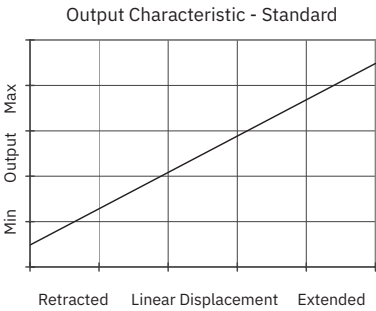
Gas / Vapour:

Protection class ia, denotes intrinsically safe for all zones
Apparatus group IIC: suitable for IIA, IIB and IIC explosive gas / vapour.
Temperature class T4: maximum surface temperature under fault conditions 135°C.
Ambient temperature range extended to -40°C to +80°C.

It is imperative Althen intrinsically safe sensors be used in conjunction with a galvanic barrier to meet the requirements of the product certification. The Althen X005 Galvanic Isolation Amplifier is purpose made for Althen IS sensors making it the perfect choice. Refer to the X005 datasheet for product specification and output configuration options.

For cable lengths exceeding 10 metres a five wire connection is recommended to eliminate errors introduced by cable resistance and associated temperature coefficients.

ATEX / IECEx / UKEX approved sensors suitable for dust (E series) and mining (M series) applications, are also available from Althen.



X117	a	b	c	d	e	f	g	h	j
	Displacement	A	Connections	Option	Option	Option	Option	Option	Z000

a Displacement		Value
Factory set to any length from 0-5 mm to 0-350 mm (e.g. 0-76 mm)		76
b Output		
Supply V _{dc} (tolerance)	Output	Code
+5V (4.5 - 5.5V)	0.5 - 4.5V (ratiometric with supply)	A
Supply Current: 10mA nominal, 12mA max.		
c Connections		Code
Cable boot radial IP67, 3-core cable		Ixx
Cable boot radial IP67, 5-core cable		IQxx
Cable gland radial IP67 Pg9, metal, 3-core cable		IAxx
Cable gland radial IP67 Pg9, metal, 5-core cable		IAQxx
Cable gland radial IP67 M8, metal, 3-core cable		IBxx
Cable gland radial IP67 M8, metal, 5-core cable		IBQxx
Connector axial IP67 4 pin M12 IEC 61076-2-101, nylon		J
Connector axial IP67 4 pin M12 IEC 61076-2-101, nylon, pre-wired 3-core cable		Jxx
Connector axial IP67 4 pin M12 IEC 61076-2-101, nylon, pre-wired 5-core cable		JQxx
Connector radial IP67 4 pin M12 IEC 61076-2-101, nylon		K
Connector radial IP67 4 pin M12 IEC 61076-2-101, nylon, pre-wired 3-core cable		Kxx
Connector radial IP67 4 pin M12 IEC 61076-2-101, nylon, pre-wired 5-core cable		KQxx
Connector radial IP67 4 pin M8 IEC 61076-2-104, nylon		KA
Connector radial IP67 4 pin M8 IEC 61076-2-104, nylon, pre-wired 3-core cable		KAxx
Cable gland axial IP67 Pg9, metal, 3-core cable		Lxx
Cable gland axial IP67 Pg9, metal, 5-core cable		LQxx

Specify required cable length 'xx' in cm. e.g. L2000 specifies axial cable gland with 20 m of cable, 50 cm supplied as standard. Note! maximum length supplied 15000cm. N.b.! M8 connector option with 5-core cable not available.	
d Body Fittings	Code
None axial version or Male Thread M5x0.8x10 long radial version default	blank
M5 Rod-eye bearing radial version only	N
e Body Clamps	Code
None default	blank
Body Clamps 1 pair	P
f Sprung Push Rod	Code
Not sprung default	blank
Spring extend	Captive push rod only. Note! sensor length change. R
Spring retract	S
g Push Rod Fittings	Code
Male thread M5x0.8x10 long default	blank
Dome end with spring extend option 'R'	T
M5 Rod-eye Bearing	U
Magnetic Tip	WA
h Push Rod	Code
Captive push rod retained default	blank
Non-captive push rod can depart body	V
j Z-code	Code
Calibration to suit X005 required	Z000
± 0.1% FSO @20°C Independent Linearity 0 - 10 mm min.	Z650
¼" Rod eyes with options 'N' and/or 'U'	Z827

THREE OR FIVE-WIRE MODE CONNECTION

The aim of this document is to help readers who do not understand what is meant by three or five wire modes of connection between the galvanic isolation amplifier and sensor, and the factors behind them. It is by no means an in-depth technical analysis of the subject.

Whether opting for a pre-wired Althen Intrinsically Safe sensor or one with a connector, choosing the right mode of connection and cable to suit the application requires careful consideration.

Interconnecting cables are not perfect conductors and offer resistance to current flow, the magnitude of resistance[†] depends on conductors resistivity, which changes with temperature, cross sectional area[‡] and length. If the voltage were to be measured at both ends of a length of wire it would be found they are different, this is known as volts drop. Volts drop changes with current flow and can be calculated using Ohm's law, it should be noted that volts drop occurs in both positive and negative conductors. The effects of volts drop can be reduced by increasing the conductors cross sectional area, this does not however eliminate the effects due to temperature variation. There are instances where large cross-section cables are not practical; for example most standard industrial connectors of the type used for sensors have a maximum conductor capacity of 0.75mm², copper prices and ease of installation are other considerations.

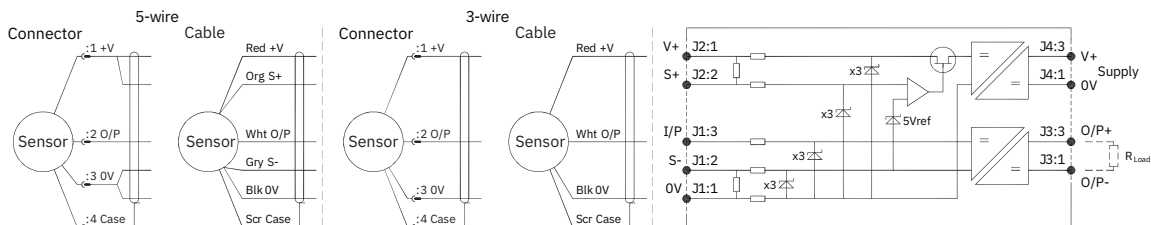
This is important because the effects of volts drop can significantly alter the perceived accuracy of the sensor which is ratiometric i.e. the output signal is directly affected by the voltage across the sensor. Changes in temperature will also be seen as gain variation in the sensor output.

Three wire mode connections are common and are suitable in most cases with short or moderate cable runs. Applications that do not require a high degree of accuracy but have cable runs, say in excess of 10m, volts drop can reduced by introducing a terminal box close to the sensor and using a larger cross-section cable for a majority of the cable run. Sensors supplied with three core cable are calibrated with the cable fitted which largely eliminates errors due to conductor resistance at room temperature however, as mentioned above, small gain errors due to temperature fluctuations should be expected.

Five wire mode connections have significant benefits as losses in the positive and negative conductors are compensated for by the galvanic isolation amplifier which can ‘sense’ the voltage across the sensor and dynamically adjust the output voltage so that the voltage across the sensor is correct. The effects of cable resistance and associated temperature coefficients are eliminated allowing for smaller conductors than a three wire connection for the same cable run. The amplifier can compensate for up to 15Ω per conductor with a current flow of 15mA, which is more than adequate for 150m of 0.25 mm² cable, longer lengths will require larger conductors.

For this reason Althen recommends five wire connections for cable lengths exceeding 10 metres in 0.25 mm² cable to preserve the full accuracy of the sensor.

See illustrations below for examples of connecting a sensor to the galvanic isolation amplifier.



Cable Length (metres)	Up to 150	150 - 300	300 - 450	450 - 600	600 - 900	900 - 1000
Cross Section (mm ²)	0.25	0.5	0.75	1.0	1.5	2.0

The table above shows recommended conductor sizes with respect to cable length for both three and five wire connections, based on copper conductors. Three wire connections will introduce a gain reduction of 5% and a $\pm 1\%$ temperature dependence of gain over the range -40°C to +80°C for the cable temperature. (i.e. about -150 ppm/°C for the maximum lengths shown and less pro rata for shorter lengths.)

It should be noted that the maximum cable length, as specified in the sensor certification, takes **precedence** and **must not** be exceeded.

Althen sensors are supplied with three core 0.25 mm² cable as standard, however five core 0.25 mm² cable can be supplied on request. The galvanic isolation amplifier is available as;

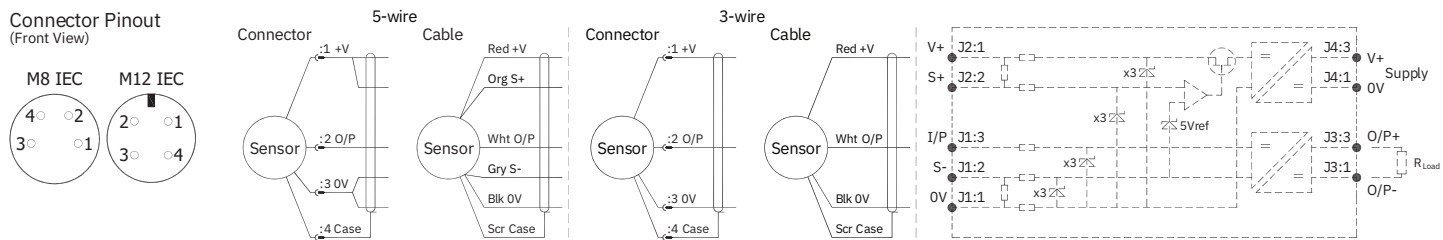
- G005-*** for ‘G’ and ‘H’ prefix sensors
- X005-*** for ‘E’, ‘M’ and ‘X’ prefix sensors

[†] $R = \rho L/A$ ρ is the resistivity of the conductor (Ωm) L is the length of conductor (m) A is the conductor cross-sectional area (m²).
[‡] It is presumed that direct current flow is uniform across the cross-section of the wire, the galvanic isolation amplifier and sensor are a dc system.

INSTALLATION INFORMATION

For certificate number and safety parameters information for product marked EX04, see next page.

ATEX / IECEx / UKEX Qualified to Intrinsic Safety Standard Certificate numbers SIRA 13ATEX2371X IECEX SIR 13.0154X CSAE 21UKEX2537X		Ex II 1G Ex ia IIC T4 Ga (Ta = -40°C to +80°C)	
Electronics Version	Output Description	Supply Voltage: V _s (tolerance)	Load resistance
EX07	0.5 - 4.5V (ratiometric with supply) [Output code 'A']	+5V (4.5 - 5.5V)	5kΩ min



PUTTING INTO SERVICE

The sensor must be used with a galvanic isolation barrier designed to supply the sensor with a nominal 5V and to transmit the sensor output to a safe area. The barrier parameters must not exceed:-

Ui = 11.4V	Ii = 0.20A	Pi = 0.51W
Ci = 1.36μF*	Li = 860μH*	(with maximum cable length)
Ci = 1.16μF	Li = 50μH	(without cable)

*Figures for 1km cable where: Ci = 200pF/m & Li = 810nH/m

The sensor is certified to be used with up to **1000m** of cable, cable characteristics must not exceed:-

Capacitance: ≤ 200 pF/m or max. total of: 200 nF

Inductance: ≤ 810 nH/m or max. total of: 810 μH

Approval only applies to specified ambient temperature range and atmospheric conditions in the range: 0.80 to 1.10 Bar, oxygen ≤ 21%.

The performance of the sensor may be affected by voltage drops associated with long cable lengths; For cable lengths exceeding 10 metres a five wire connection is recommended to eliminate errors introduced by cable resistance and associated temperature coefficients.

Warning - The M12 IEC connector may be rotated for purposes of convenient orientation of the connector and cable, however rotating the connector more than one complete revolution is not recommended. **Repeated rotation of the connector will damage the internal wiring!**

SPECIAL CONDITION FOR SAFE USE

The apparatus does not meet the 500 V r.m.s dielectric strength test between circuit and frame, in accordance with clause 6.3.13 of IEC 60079- 11:2011. This must be taken into consideration on installation.

Under certain extreme circumstances, the non-metallic and isolated metal parts incorporated in the enclosure of this equipment may generate an ignition-capable level of electrostatic charge. Therefore the equipment shall not be installed in a location where the external conditions are conducive to the build-up of electrostatic charge on such surfaces. This is particularly important if the equipment is installed in a zone 0 location. In addition, the equipment shall only be cleaned with a damp cloth.

Use: The sensor is designed to measure linear displacement and provide an analogue output signal.

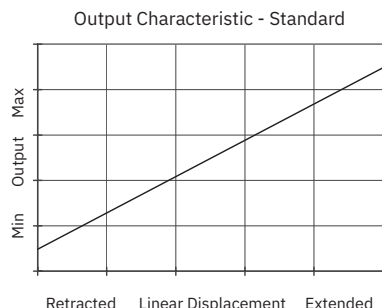
Assembly and Dismantling:

The unit is not to be serviced or dismantled and re-assembled by the user.

Maintenance: No maintenance is required.

OUTPUT CHARACTERISTIC

Target is extended 2 mm from end of body at start of normal travel. The output increases as the target extends from the sensor body, the calibrated stroke is between 5 mm and 350 mm.



MECHANICAL MOUNTING

Depending on options; Body can be mounted by M5x0.8 male thread, rod eye bearing or by clamping the sensor body - body clamps are available, if not already ordered. Target by M5x0.8 male thread, rod eye bearing or magnetic tip. It is assumed that the sensor and target mounting points share a common earth.

INCORRECT CONNECTION PROTECTION LEVELS

A	Not protected – the sensor is not protected against either reverse polarity or over-voltage. The risk of damage should be minimal where the supply current is limited to less than 50mA.
---	--

For certificate number and safety parameters information for product marked EX07, see previous page.

ATEX Qualified to Intrinsic Safety Standard Certificate numbers SIRA 00ATEX2076X			Ex II 1G EEx ia IIC T4 (Ta = -40°C to +80°C)
Electronics Version	Output Description	Supply Voltage: V_s (tolerance)	Load resistance
EX04	0.5 - 4.5V (ratiometric with supply) [Output code 'A']	+5V (4.5 - 5.5V)	5kΩ min

The barrier parameters must not exceed:-

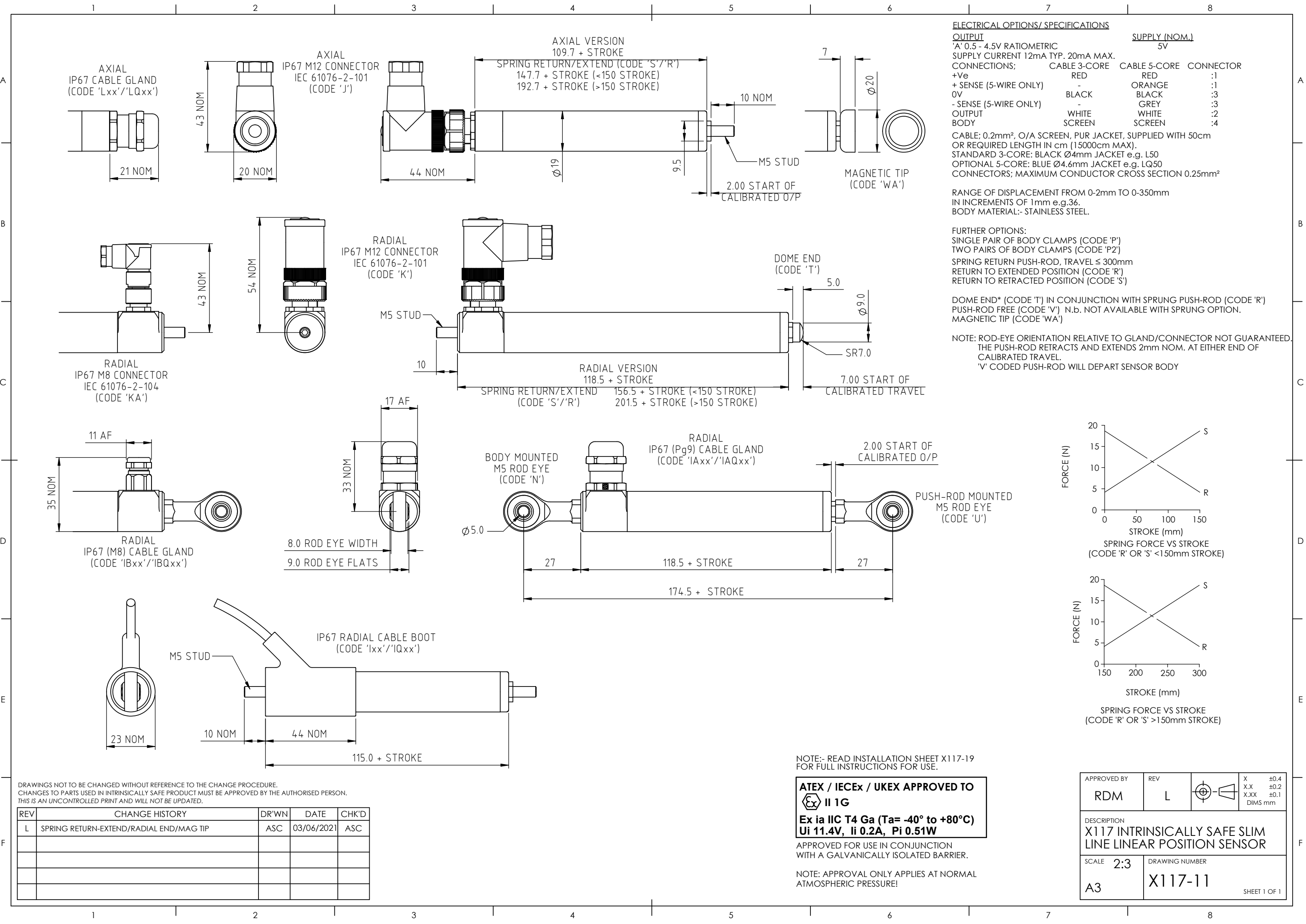
Ui = 11.4V	Ii = 0.20A	Pi = 0.51W
Ci = 1.36μF*	Li = 710μH* ('Ixx' or 'Lxx' options)	*Figures for 1km cable
Ci = 1.16μF	Li = 50μH ('J' or 'K' options)	

The sensor is certified to be used with up to **1000m** of cable, cable characteristics must not exceed:-

Capacitance: ≤ 200 pF/m or max. total of: 200 nF

Inductance: ≤ 660 nH/m or max. total of: 660 μH

With the exception of the certificate number and safety parameters above, all other notes regarding Putting Into Service, Use, Assembly and Dismantling etc. on previous page apply to sensors marked EX04 or EX07.



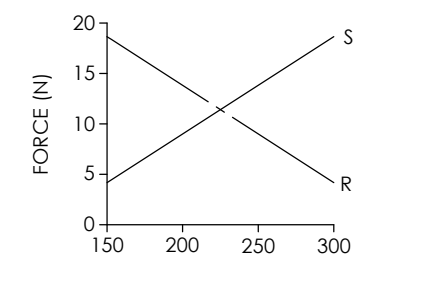
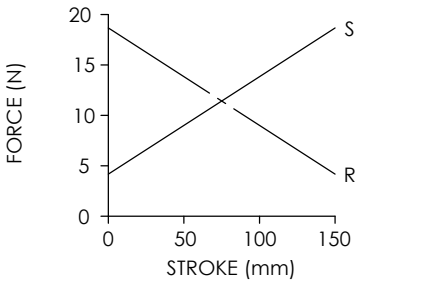
<u>ELECTRICAL OPTIONS/ SPECIFICATIONS</u>			
<u>OUTPUT</u>		<u>SUPPLY (NOM.)</u>	
'A' 0.5 - 4.5V RATIOMETRIC		5V	
SUPPLY CURRENT 12mA TYP. 20mA MAX.			
CONNECTIONS;	CABLE 3-CORE	CABLE 5-CORE	CONNECTOR
+Ve	RED	RED	:1
+ SENSE (5-WIRE ONLY)	-	ORANGE	:1
0V	BLACK	BLACK	:3
- SENSE (5-WIRE ONLY)	-	GREY	:3
OUTPUT	WHITE	WHITE	:2
BODY	SCREEN	SCREEN	:4

CABLE; 0.2mm², O/A SCREEN, PUR JACKET, SUPPLIED WITH 50cm OR REQUIRED LENGTH IN cm (15000cm MAX).
STANDARD 3-CORE: BLACK Ø4mm JACKET e.g. L50
OPTIONAL 5-CORE: BLUE Ø4.6mm JACKET e.g. LQ50
CONNECTORS; MAXIMUM CONDUCTOR CROSS SECTION 0.25mm²

RANGE OF DISPLACEMENT FROM 0-2mm TO 0-350mm
IN INCREMENTS OF 1mm e.g.36.
BODY MATERIAL:- STAINLESS STEEL.

FURTHER OPTIONS:
SINGLE PAIR OF BODY CLAMPS (CODE 'P')
TWO PAIRS OF BODY CLAMPS (CODE 'P2')
SPRING RETURN PUSH-ROD, TRAVEL ≤ 300mm
RETURN TO EXTENDED POSITION (CODE 'R')
RETURN TO RETRACTED POSITION (CODE 'S')

NOTE: ROD-EYE ORIENTATION RELATIVE TO GLAND/CONNECTOR NOT GUARANTEED.
THE PUSH-ROD RETRACTS AND EXTENDS 2mm NOM. AT EITHER END OF CALIBRATED TRAVEL.
'V' CODED PUSH-ROD WILL DEPART SENSOR BODY




DRAWINGS NOT TO BE CHANGED WITHOUT REFERENCE TO THE CHANGE PROCEDURE.
CHANGES TO PARTS USED IN INTRINSICALLY SAFE PRODUCT MUST BE APPROVED BY THE AUTHORISED PERSON.
THIS IS AN UNCONTROLLED PRINT AND WILL NOT BE UPDATED.

REV	CHANGE HISTORY	DR'WN	DATE	CHK'D
L	SPRING RETURN-EXTEND/RADIAL END/MAG TIP	ASC	03/06/2021	ASC

NOTE:- READ INSTALLATION SHEET X117-19 FOR FULL INSTRUCTIONS FOR USE.

ATEX / IECEx / UKEX APPROVED TO

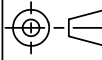
 II 1G

Ex ia IIC T4 Ga (Ta= -40° to +80°C)

Ui 11.4V, Ii 0.2A, Pi 0.51W

APPROVED FOR USE IN CONJUNCTION WITH A GALVANICALLY ISOLATED BARRIER.

NOTE: APPROVAL ONLY APPLIES AT NORMAL ATMOSPHERIC PRESSURE!

APPROVED BY	REV		X ±0.4 X.X ±0.2 X.XX ±0.1 DIMs mm
RDM	L		
DESCRIPTION			
X117 INTRINSICALLY SAFE SLIM LINE LINEAR POSITION SENSOR			
SCALE	2:3	DRAWING NUMBER	
A3		X117-11	
SHEET 1 OF 1			