

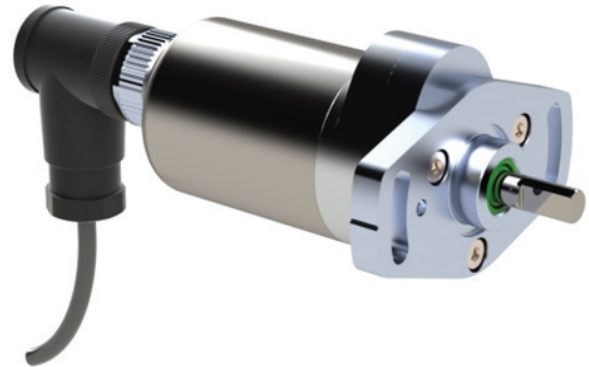


α

## X530

### APPLICATION

- Intrinsically safe for Gas to: Ex II 1G
- Non-contacting inductive technology to eliminate wear
- Angle set to customer's requirement
- Compact, durable and reliable
- High accuracy and stability
- Sealing to IP67



As a leading designer and manufacturer of linear, rotary, tilt and intrinsically safe position sensors, Althen has the expertise to supply a sensor to suit a wide variety of applications. Our X530 incorporates electronics system EX07 which is ATEX / IECEx / UKEX approved for use in potentially explosive **gas/vapour** atmospheres. The X530, like all Althen sensors, is supplied with the output calibrated to the angle required by the customer, up to 360 degrees, with full EMC protection built in. The sensor provides a linear output proportional with input shaft rotation. There is a machined registration mark to identify the calibrated mid point. Shaft rotation is limited to  $\pm 220$  degrees from the mid point.

It is particularly suitable for OEMs seeking good sensor performance for arduous applications such as industrial machinery where cost is important. Overall performance, repeatability and stability are outstanding over a wide temperature range. The X530 has long service life and environmental resistance with a rugged stainless steel body and shaft. The flange mount makes the sensor easy to install. Environmental sealing is to IP67.

### SPECIFICATIONS

<b>Dimensions<sup>1</sup></b> Body diameter Flange Diameter Body Length (to mounting face) Shaft	35 mm 60 mm 61.3 mm 15 mm Ø 6 mm
<b>Independent Linearity</b>	$\leq \pm 0.25\%$ FSO @ 20°C
<b>Temperature Coefficients</b>	$< \pm 0.01\%/^{\circ}\text{C}$ Gain & $< \pm 0.01\%$ FS/ $^{\circ}\text{C}$ Offset
<b>Frequency Response</b>	$> 10$ kHz (-3dB)
<b>Resolution</b>	Infinite
<b>Noise</b>	$< 0.02\%$ FSO
<b>Torque</b>	$< 20$ mNm Static
<b>Intrinsic Safety<sup>2</sup></b>	Ex II 1G Ex ia IIC T4 Ga (Ta= -40°C to 80°C)
<b>Sensor Input Parameters (connector option/s) (cable option/s)</b>	Ui: 11.4V, Ii: 0.20A, Pi: 0.51W. Ci: 1.16μF, Li: 50μH Ci: 1.36μF, Li: 860μH with 1km max. cable
<b>Environmental Temperature Limits Operating Storage</b>	-40°C to +80°C -40°C to +125°C
<b>Sealing</b>	IP67
<b>EMC Performance</b>	EN 61000-6-2, EN 61000-6-3
<b>Vibration</b>	IEC 68-2-6: 10 g

09.2025 | version 0001

SPECIFICATIONS (CONTINUED)

Shock	IEC 68-2-29: 40 g
MTBF	350,000 hrs 40°C Gf
Drawing List <sup>3</sup> X530-11	Sensor Outline
<sup>1</sup> For full mechanical details see drawings X530-11 <sup>2</sup> Approval only applies to the specified ambient temperature range and atmospheric conditions in the range 0.80 to 1.10 Bar, oxygen ≤ 21% <sup>3</sup> 3D models, step or .igs format, available on request	

INTRINSICALLY SAFE EQUIPMENT

Intrinsically safe equipment is defined as “equipment which is incapable of releasing sufficient electrical or thermal energy under normal or abnormal conditions to cause ignition of a specific hazardous atmosphere mixture in its most easily ignited concentration.”  
ATEX / IECEx / UKEX approved to;

Ex II 1G  
Ex ia IIC T4 Ga (Ta= -40°C to 80°C)

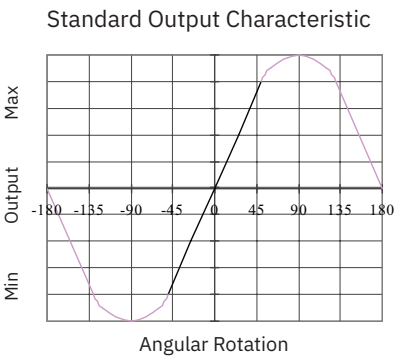
Designates the sensor as belonging to; Group II: suitable for all areas **except mining**, Category 1 G: can be used in areas with continuous, long or frequent periods of exposure to hazardous gas / vapour (Zones 2 to 0).

**Gas / Vapour:**  
Protection class ia, denotes intrinsically safe for all zones  
Apparatus group IIC: suitable for IIA, IIB and IIC explosive gas / vapour.  
Temperature class T4: maximum surface temperature under fault conditions 135°C.  
Ambient temperature range extended to -40°C to +80°C.

It is imperative Althen intrinsically safe sensors be used in conjunction with a galvanic barrier to meet the requirements of the product certification. The Althen X005 Galvanic Isolation Amplifier is purpose made for Althen IS sensors making it the perfect choice. Refer to the X005 datasheet for product specification and output configuration options.

For cable lengths exceeding 10 metres a five wire connection is recommended to eliminate errors introduced by cable resistance and associated temperature coefficients.

ATEX / IECEx / UKEX approved sensors suitable for dust (E series) and mining (M series) applications, are also available from Althen.



	a	b	c	d	e
X530	Displacement	A	Adjustments	Connections	Z000

a Displacement		Value
Factory set to any angle from 0-100° (±50°) to 0-360° (±180°) (e.g. 0-230°)		230
b Output		
Supply V <sub>dc</sub> (tolerance)	Output	Code
+5V (4.5 - 5.5V)	0.5 - 4.5V (ratiometric with supply)	A
Supply Current 10mA typical, 12mA max.		
c Calibration Adjustments		Code
Accessible default		blank
Sealed		Y
d Connections (Cable or Connector)		Code
Connector IP67 4 pin M12 IEC 61076-2-101, nylon		J
Connector IP67 4 pin M12 IEC 61076-2-101, nylon, pre-wired 3-core cable		Jxx

Connector IP67 4 pin M12 IEC 61076-2-101, nylon, pre-wired 5-core cable	JQxx
Cable gland IP67 Pg9, metal, 3-core cable	Lxx
Cable gland IP67 Pg9, metal, 5-core cable	LQxx
Cable gland, short† IP67, metal, 3-core cable	Mxx
Cable gland, short† IP67, metal, 5-core cable	MQxx
Specify required cable length 'xx' in cm. e.g. L2000 specifies axial cable gland with 20 m of cable, 50 cm supplied as standard. <b>Note!</b> maximum length supplied 15000cm. <b>†Nb:</b> restricted cable pull strength.	
e Z-code	Code
Calibration to suit X005 required	Z000

THREE OR FIVE-WIRE MODE CONNECTION

The aim of this document is to help readers who do not understand what is meant by three or five wire modes of connection between the galvanic isolation amplifier and sensor, and the factors behind them. It is by no means an in-depth technical analysis of the subject.

Whether opting for a pre-wired Althen Intrinsically Safe sensor or one with a connector, choosing the right mode of connection and cable to suit the application requires careful consideration.

Interconnecting cables are not perfect conductors and offer resistance to current flow, the magnitude of resistance<sup>†</sup> depends on conductors resistivity, which changes with temperature, cross sectional area<sup>‡</sup> and length. If the voltage were to be measured at both ends of a length of wire it would be found they are different, this is known as volts drop. Volts drop changes with current flow and can be calculated using Ohm's law, it should be noted that volts drop occurs in both positive and negative conductors. The effects of volts drop can be reduced by increasing the conductors cross sectional area, this does not however eliminate the effects due to temperature variation. There are instances where large cross-section cables are not practical; for example most standard industrial connectors of the type used for sensors have a maximum conductor capacity of 0.75mm<sup>2</sup>, copper prices and ease of installation are other considerations.

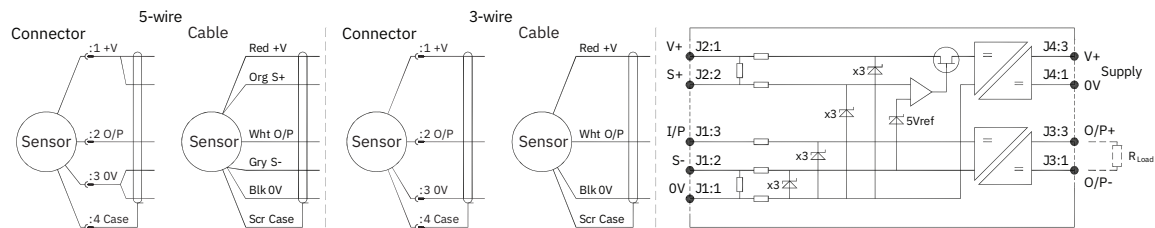
This is important because the effects of volts drop can significantly alter the perceived accuracy of the sensor which is ratiometric i.e. the output signal is directly affected by the voltage across the sensor. Changes in temperature will also be seen as gain variation in the sensor output.

**Three wire mode connections** are common and are suitable in most cases with short or moderate cable runs. Applications that do not require a high degree of accuracy but have cable runs, say in excess of 10m, volts drop can be reduced by introducing a terminal box close to the sensor and using a larger cross-section cable for a majority of the cable run. Sensors supplied with three core cable are calibrated with the cable fitted which largely eliminates errors due to conductor resistance at room temperature however, as mentioned above, small gain errors due to temperature fluctuations should be expected.

**Five wire mode connections** have significant benefits as losses in the positive and negative conductors are compensated for by the galvanic isolation amplifier which can 'sense' the voltage across the sensor and dynamically adjust the output voltage so that the voltage across the sensor is correct. The effects of cable resistance and associated temperature coefficients are eliminated allowing for smaller conductors than a three wire connection for the same cable run. The amplifier can compensate for up to 15Ω per conductor with a current flow of 15mA, which is more than adequate for 150m of 0.25 mm<sup>2</sup> cable, longer lengths will require larger conductors.

**For this reason Althen recommends five wire connections for cable lengths exceeding 10 metres in 0.25 mm<sup>2</sup> cable to preserve the full accuracy of the sensor.**

See illustrations below for examples of connecting a sensor to the galvanic isolation amplifier.



Cable Length (metres)	Up to 150	150 - 300	300 - 450	450 - 600	600 - 900	900 - 1000
Cross Section (mm <sup>2</sup> )	0.25	0.5	0.75	1.0	1.5	2.0

The table above shows recommended conductor sizes with respect to cable length for both three and five wire connections, based on copper conductors. Three wire connections will introduce a gain reduction of 5% and a  $\pm 1\%$  temperature dependence of gain over the range  $-40^{\circ}\text{C}$  to  $+80^{\circ}\text{C}$  for the cable temperature. (i.e. about  $-150\text{ ppm}/^{\circ}\text{C}$  for the maximum lengths shown and less pro rata for shorter lengths.)

It should be noted that the maximum cable length, as specified in the sensor certification, takes **precedence** and **must not** be exceeded.

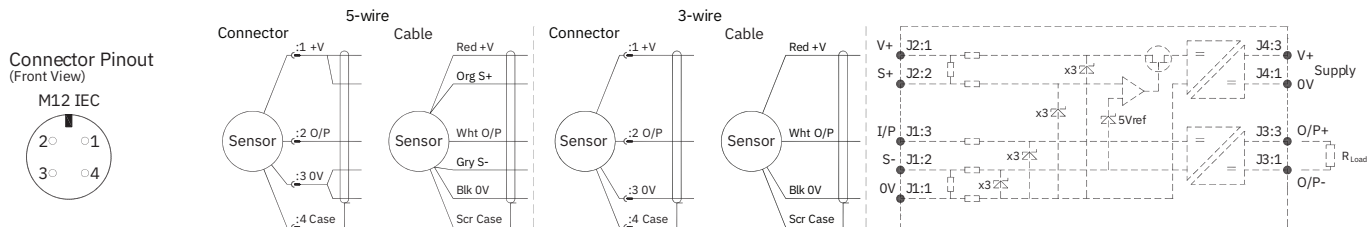
Althen sensors are supplied with three core  $0.25\text{ mm}^2$  cable as standard, however five core  $0.25\text{ mm}^2$  cable can be supplied on request. The galvanic isolation amplifier is available as;

- G005-\*\*\* for 'G' and 'H' prefix sensors
- X005-\*\*\* for 'E', 'M' and 'X' prefix sensors

<sup>†</sup>  $R = \rho L/A$   $\rho$  is the resistivity of the conductor ( $\Omega\text{m}$ )  $L$  is the length of conductor (m)  $A$  is the conductor cross-sectional area ( $\text{m}^2$ ).  
<sup>‡</sup> It is presumed that direct current flow is uniform across the cross-section of the wire, the galvanic isolation amplifier and sensor are a dc system.

INSTALLATION INFORMATION

ATEX / IECEx / UKEX Qualified to Intrinsic Safety Standard Certificate numbers SIRA 13ATEX2371X IECEx SIR 13.0154X CSAE 21UKEX2537X			Ex II 1G Ex ia IIC T4 Ga ( $T_a = -40^{\circ}\text{C}$ to $+80^{\circ}\text{C}$ )
Electronics Version	Output Description	Supply Voltage: $V_s$ (tolerance)	Load resistance
EX07	0.5 - 4.5V (ratiometric with supply) [Output code 'A']	+5V (4.5 - 5.5V)	5k $\Omega$ min



PUTTING INTO SERVICE

The sensor must be used with a galvanic isolation barrier designed to supply the sensor with a nominal 5V and to transmit the sensor output to a safe area. The barrier parameters must not exceed:-

Ui = 11.4V	Ii = 0.20A	Pi = 0.51W
Ci = 1.36µF*	Li = 860µH*	(with cable) *Figures for 1km cable
Ci = 1.16µF	Li = 50µH	(without cable)

The sensor is certified to be used with up to **1000m** of cable, cable characteristics must not exceed:-

Capacitance: ≤ 200 pF/m or max. total of: 200 nF  
Inductance: ≤ 810 nH/m or max. total of: 810 µH

Approval only applies to specified ambient temperature range and atmospheric conditions in the range: 0.80 to 1.10 Bar, oxygen ≤ 21%.

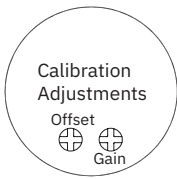
The performance of the sensor may be affected by voltage drops associated with long cable lengths; For cable lengths exceeding 10 metres a five wire connection is recommended to eliminate errors introduced by cable resistance and associated temperature coefficients.

**Warning** - The M12 IEC connector may be rotated for purposes of convenient orientation of the connector and cable, however rotating the connector more than one complete revolution is not recommended. **Repeated rotation of the connector will damage the internal wiring!**

GAIN AND OFFSET ADJUSTMENT

(Where accessible - Typically ± 10% Min available)

To adjust the gain or offset use a small potentiometer adjuster or screwdriver 2mm across. Do not apply too much force on the potentiometers.



SPECIAL CONDITION FOR SAFE USE

The apparatus does not meet the 500 V r.m.s dielectric strength test between circuit and frame, in accordance with clause 6.3.13 of IEC 60079- 11:2011. This must be taken into consideration on installation.

Under certain extreme circumstances, the non-metallic and isolated metal parts incorporated in the enclosure of this equipment may generate an ignition-capable level of electrostatic charge. Therefore the equipment shall not be installed in a location where the external conditions are conducive to the build-up of electrostatic charge on such surfaces. This is particularly important if the equipment is installed in a zone 0 location. In addition, the equipment shall only be cleaned with a damp cloth.

**Use:** The sensor is designed to measure rotary displacement and provide an analogue output signal.

Assembly and Dismantling:

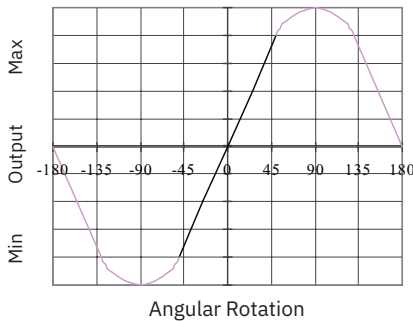
The unit is not to be serviced or dismantled and re-assembled by the user.

**Maintenance:** No maintenance is required.

OUTPUT CHARACTERISTIC

The sensor has ±220° mechanical rotation around the mid point. At the mid point the output signal will be half full scale deflection, the shaft flat will be aligned with the registration mark in the base of the sensor ±5°. In the calibrated range the output increases as the shaft is rotated in an anti-clockwise direction viewed from the shaft. The calibrated range is factory set, to between 100° and 360°.

Standard Output Characteristic

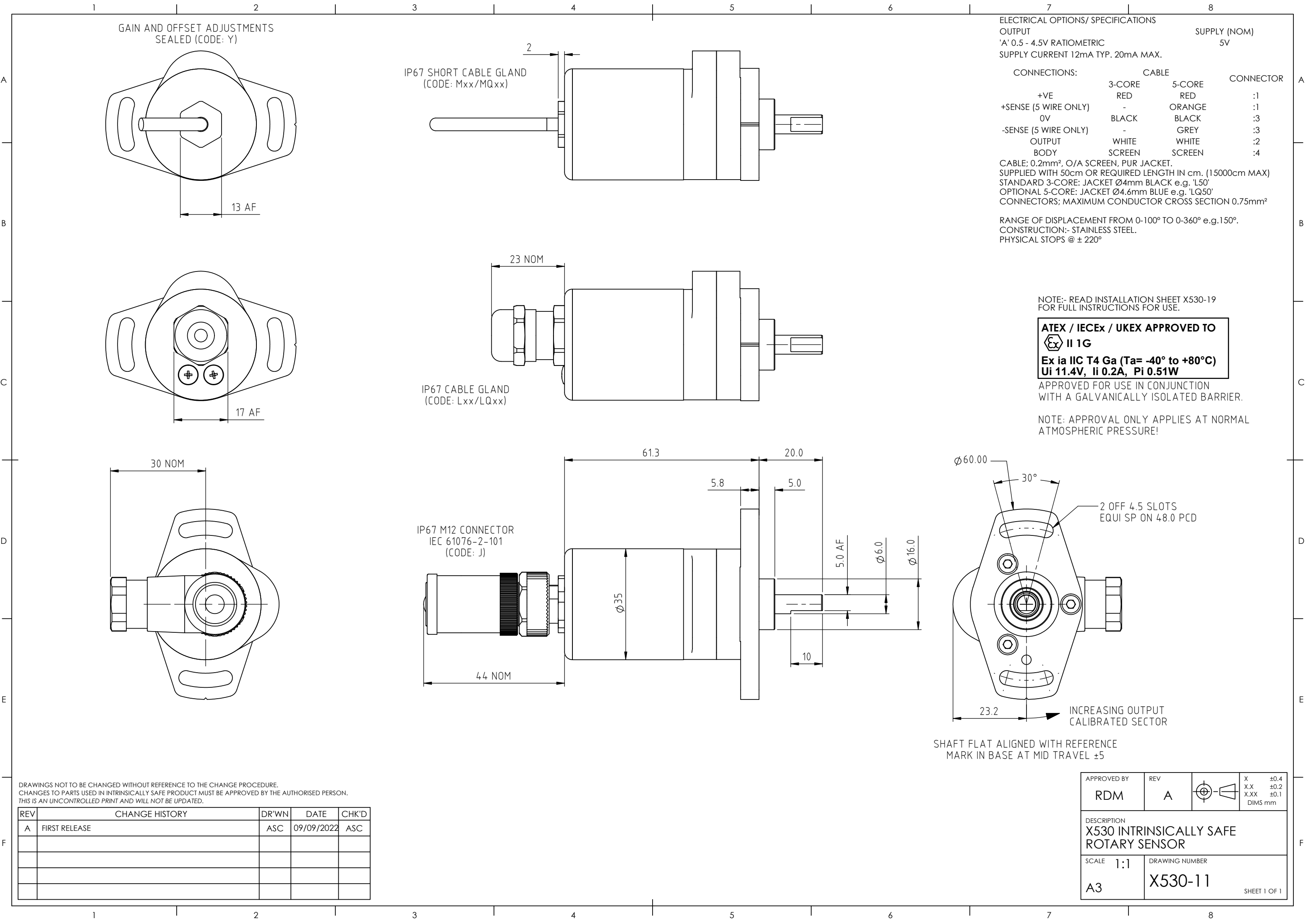


MECHANICAL MOUNTING

Flange mounted - see drawing X530-11. The sensor should be mounted with minimal axial and radial loading on the shaft for optimum life. It is recommended that the shaft is coupled to the drive using a flexible coupling, recommended maximum axial load 1kg. Tests indicate that life in excess of 16 million cycles can be achieved with 1kg side and end load.

INCORRECT CONNECTION PROTECTION LEVELS

A	<b>Not protected</b> – the sensor is <b>not</b> protected against either reverse polarity or over-voltage. The risk of damage should be minimal where the supply current is limited to less than 50mA.
---	--



ELECTRICAL OPTIONS/ SPECIFICATIONS  
OUTPUT  
'A' 0.5 - 4.5V RATIOMETRIC  
SUPPLY CURRENT 12mA TYP. 20mA MAX.  
SUPPLY (NOM)  
5V

CONNECTIONS:	CABLE		CONNECTOR
	3-CORE	5-CORE	
+VE	RED	RED	:1
+SENSE (5 WIRE ONLY)	-	ORANGE	:1
0V	BLACK	BLACK	:3
-SENSE (5 WIRE ONLY)	-	GREY	:3
OUTPUT	WHITE	WHITE	:2
BODY	SCREEN	SCREEN	:4

CABLE; 0.2mm<sup>2</sup>, O/A SCREEN, PUR JACKET.  
SUPPLIED WITH 50cm OR REQUIRED LENGTH IN cm. (15000cm MAX)  
STANDARD 3-CORE: JACKET  $\phi 4$ mm BLACK e.g. 'L50'  
OPTIONAL 5-CORE: JACKET  $\phi 4.6$ mm BLUE e.g. 'LQ50'  
CONNECTORS; MAXIMUM CONDUCTOR CROSS SECTION 0.75mm<sup>2</sup>

RANGE OF DISPLACEMENT FROM 0-100° TO 0-360° e.g. 150°.  
CONSTRUCTION:- STAINLESS STEEL.  
PHYSICAL STOPS @  $\pm 220^\circ$

NOTE:- READ INSTALLATION SHEET X530-19  
FOR FULL INSTRUCTIONS FOR USE.

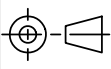
**ATEX / IECEx / UKEX APPROVED TO**  
**II 1G**  
**Ex ia IIC T4 Ga (Ta= -40° to +80°C)**  
**Ui 11.4V, li 0.2A, Pi 0.51W**

APPROVED FOR USE IN CONJUNCTION  
WITH A GALVANICALLY ISOLATED BARRIER.

NOTE: APPROVAL ONLY APPLIES AT NORMAL  
ATMOSPHERIC PRESSURE!

DRAWINGS NOT TO BE CHANGED WITHOUT REFERENCE TO THE CHANGE PROCEDURE.  
CHANGES TO PARTS USED IN INTRINSICALLY SAFE PRODUCT MUST BE APPROVED BY THE AUTHORISED PERSON.  
THIS IS AN UNCONTROLLED PRINT AND WILL NOT BE UPDATED.

REV	CHANGE HISTORY	DR'WN	DATE	CHK'D
A	FIRST RELEASE	ASC	09/09/2022	ASC

APPROVED BY <b>RDM</b>	REV <b>A</b>		X $\pm 0.4$ X.X $\pm 0.2$ X.XX $\pm 0.1$ DIMs mm
DESCRIPTION <b>X530 INTRINSICALLY SAFE ROTARY SENSOR</b>			
SCALE <b>1:1</b>	DRAWING NUMBER <b>X530-11</b>		
<b>A3</b>	SHEET 1 OF 1		